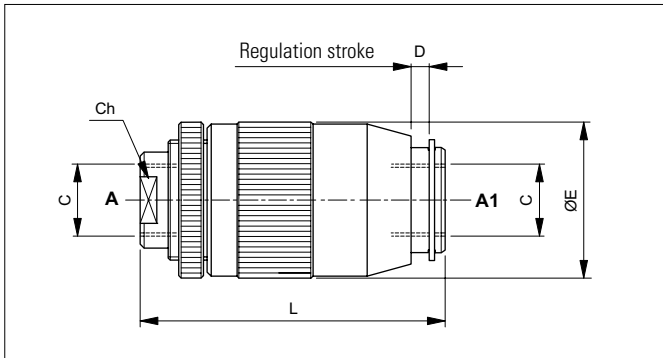


SLEEVE FLOW CONTROL VALVES UNIDIRECTIONAL AND BIDIRECTIONAL - IN-LINE MOUNTING



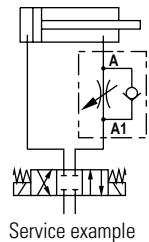
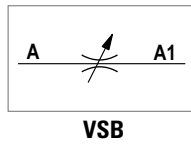
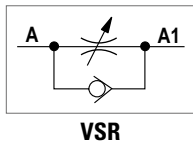
Flow control valve using non compensated throttling. The flow is reduced in only one direction (A to A1) for VSR valves and in both directions for VSB valves, by turning the outer casing of the valve right or left. Slight leakage is tolerated when the control screw or wheel is completely unscrewed. It has a galvanised steel body. The check valve ball poppet is in tempered and ground steel.

Code	C	Flow max (l/min)	Pressure max (bar)	L (mm)	E (mm)	D (mm)	Ch	Weight (kg)
VSR-VSB 0400	1/4 BSP	15	350	62	31	4.2	19	0.23
VSR-VSB 0600	3/8 BSP	30	350	73	38	4	24	0.42
VSR-VSB 0800	1/2 BSP	45	350	83	45	7.5	30	0.66
VSR-VSB 1200	3/4 BSP	85	300	102	54	10.5	36	1.12
VSR-VSB 1600	1 BSP	130	250	122	65	10	41	1.94

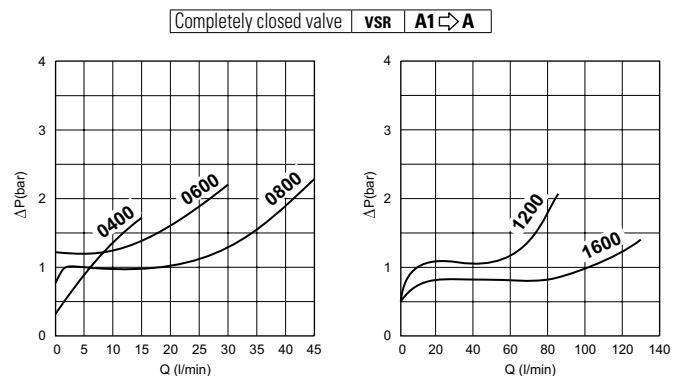
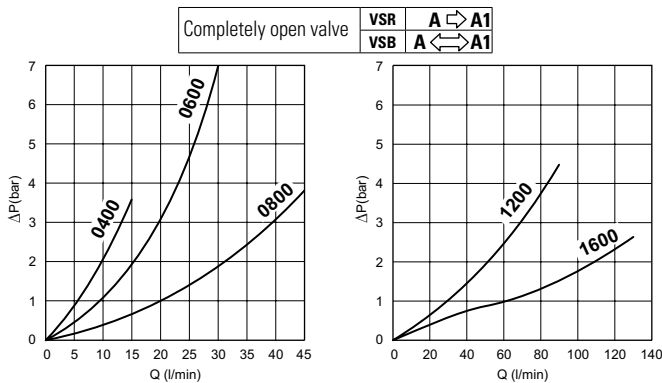
HYDRAULIC FEATURES

Hydraulic fluid	DIN 51524 Mineral oils
Fluid viscosity	10 ÷ 500 mm ² /s
Fluid temperature	-25°C ÷ 75°C
Ambient temperature	-25°C ÷ 60°C
Max. contamin. level class with filter	ISO 4406:1999 - class 19/17/14

HYDRAULIC SYMBOLS



PRESSURE DROPS



Fluid used: mineral based oil with viscosity 15 mm²/s at 40°C.

ORDERING CODE

VSR = Unidirectional flow control valve
VSB = Bidirectional flow control valve

04 = BSPP 1/4
06 = BSPP 3/8
08 = BSPP 1/2
12 = BSPP 3/4
16 = BSPP 1

VS* ** 00

Series

Size

00 = Serial N.o.