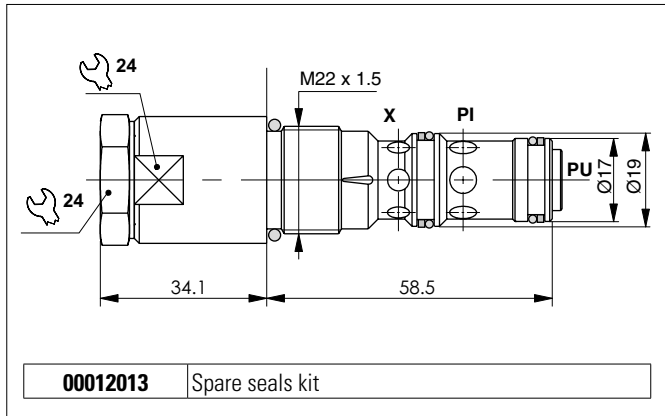


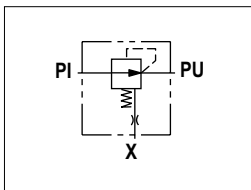
TWO-WAY PRESSURE COMPENSATOR VALVE



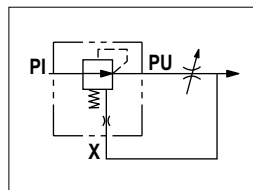
Pressure compensator type CCP maintains a constant pressure drop (Δp) regardless of downstream and up stream set pressure variation.

- Connecting a choke regulator between Pu port and Pil - piloting port - (see hydraulic scheme) it is possible to get a load independent flow regulation.
- This kind of compensator, named "meter in" (check in entrance), is suitable for application on special manifold or in line mounting bodies.

HYDRAULIC SYMBOLS



SIMPLIFIED SCHEME

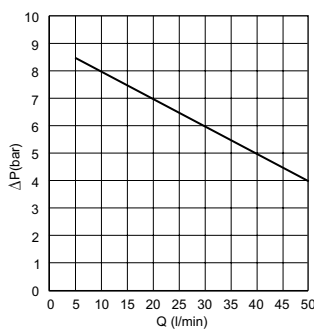


APPLICATION SCHEME

HYDRAULIC FEATURES

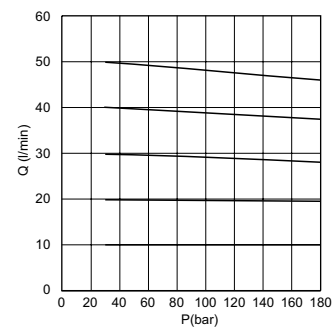
| | |
|--|--------------------------------|
| Max. working pressure | 250 bar |
| ΔP of regulation (standard) | 8 bar |
| Max. Flow | 50 l/min |
| Hydraulic fluid | DIN 51524 Mineral oils |
| Fluid viscosity | 10 ÷ 500 mm ² /s |
| Fluid temperature | -25°C ÷ 75°C |
| Ambient temperature | -25°C ÷ 60°C |
| Max. contamin. level class with filter | ISO 4406:1999 - class 19/17/14 |
| Weight | 0.2 kg |
| Tightening torque | 30 ÷ 40 Nm |
| Cavity (M22x1.5) | CN047002 (See section 17) |

ΔP BETWEEN PU AND X - FLOW



Fluid used: mineral based oil with viscosity 46 mm²/s at 40°C.

PRESSURE - FLOW RATE



14

ORDERING CODE

