

INLET MODULE UNITS WITH LS LINE, COMPENSATOR AND PRESSURE RELIEF VALVE

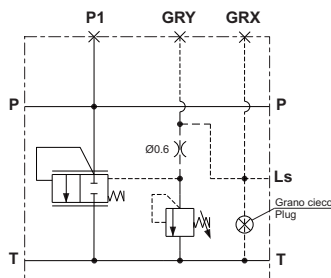


Module units FE02Q with pressure compensator for fixed displacement pumps and CMP-MC/MS adjustable pressure relief valve on LS line

- Manual adjustment with a grub screw.
- Screw with orifice for LS bleeding.
- Threaded ports P-T, G3/8" and LS, G1/4".
- Maximum flow 40 l/min.
- Aluminum body.

1

HYDRAULIC SYMBOL



FEATURES

Max. operating pressure	250 bar
Max. Flow	40 l/min
Hydraulic fluid	DIN 51524 Mineral oils
Fluid viscosity	10 ÷ 500 mm ² /s
Fluid temperature	-25°C ÷ 75°C
Ambient temperature	-25°C ÷ 60°C
Max. contamination level (filter $\beta_{25} \geq 75$)	ISO 4406:1999: class 21/19/16 NAS 1638: class 10
Weight	1 kg

Pressure relief valve (CMP-MC/MS)

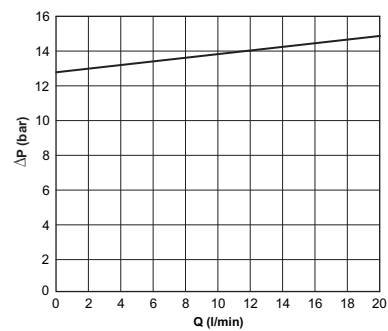
Setting range (*):	
Spring 1	max 50 bar
Spring 2	max 90 bar
Spring 3	max 190 bar
Spring 4	max 290 bar

(*) The minimum permissible setting pressure depending on the spring: see curves.

ORDERING CODE

- FE02Q** Inlet module unit (up to 40 l/min) with compensator and pressure relief valve
- 3** Size
- *** Ports:
1 = G3/8" (P,T ports) - G1/4" (LS port)
2 = 9/16"-18UNF (P,T ports) - 7/16"-20UNF (LS port)
- C** Adjustment:
C = Grub screw
- *** Setting ranges
1 = 0 ÷ 50 bar (white spring)
2 = 35 ÷ 90 bar (green spring)
3 = 75 ÷ 190 bar (yellow spring)
4 = 160 ÷ 290 bar (** (red spring)
- **** **00** = No variant
V1 = Viton
- 1** Serial No.

PRESSURE COMPENSATOR



Fluid used: mineral based oil with viscosity 46 mm²/s at 40°C.

To obtain a correct compensation the inlet flow must be 8% greater the sum of the regulated flow.

(**) Setting referred to the maximum pressure reached from the relief valve. **Do not exceed the maximum working pressure 250 bar.**

OVERALL DIMENSIONS

1

