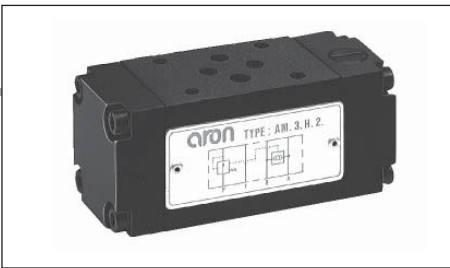


AM3H... 2 AND 3 WAY HYDROSTATS CETOP 3



AM3H...

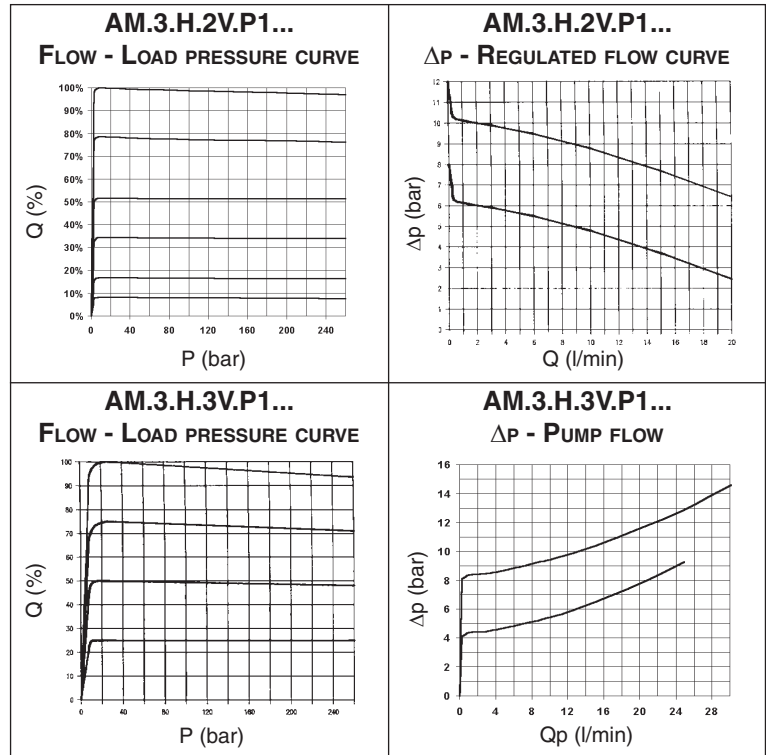
The 2 or 3 way pressure regulator type AM.3.H ensure the constant set flow rate in the presence of varying system load (pressure) by keeping constant the pressure drop ($\Delta p = 4/8$ bar) in relation to the flow rate regulation.

In order to achieve the direction and flow rate dual control function, it is normally used together with a proportional solenoid valve

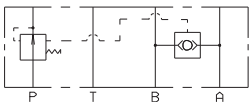
Max. flow	25 l/min
Max. operating pressure	350 bar
Δp adjustment	4 bar 8 bar
Fluid viscosity	10 ÷ 500 mm ² /s
Fluid temperature	-25°C ÷ 75°C
Ambient temperature	-25°C ÷ 60°C
Max. contamination level class 8 in accordance with NAS 1638 with filter $\beta_{10} \geq 75$	
Weight	1,4 Kg

ORDERING CODE

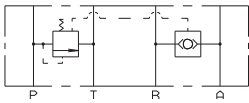
AM	Modular valve
3	CETOP 3/NG6
H	Hydrostat
**	2V = 2 way 3V = 3 way
P1	Function at port P
**	Differential pressure (Δp) 04 = Δp 4 bar 08 = Δp 8 bar
**	00 = No variant V1 = Viton
2	Serial No.



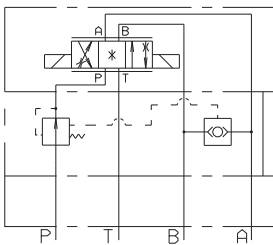
8



AM.3.H.2V.P1...



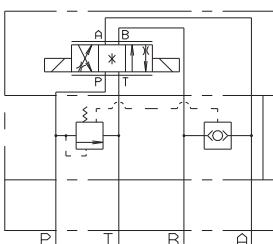
AM.3.H.3V.P1...



Proportional valve XD.3.C...

Hydrostat AM.3.H.2V...

BASE

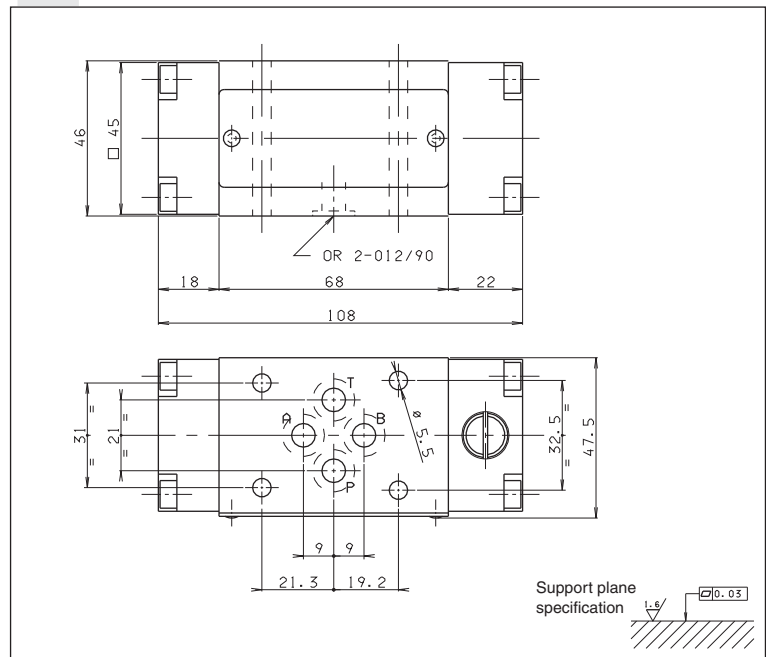


Proportional valve XD.3.C...

Hydrostat AM.3.H.3V...

BASE

OVERALL DIMENSIONS



Support plane specification $\sqrt{0.03}$