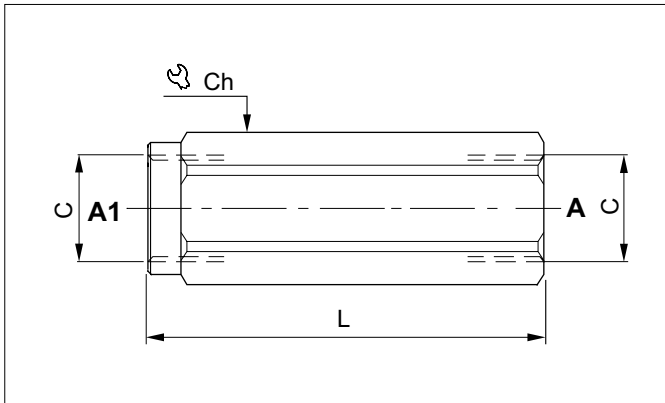


ONE-WAY CHECK VALVES - IN-LINE MOUNTING

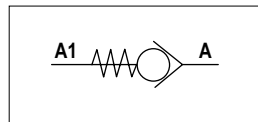


The check-valves permit one-directional oil flow only. On the opposite side the sealing is guaranteed by a hardened and ground taper steel poppet. The spring permits an easy valve installation in any position. External steel body protected on surface by a zinc plating.

HYDRAULIC FEATURES

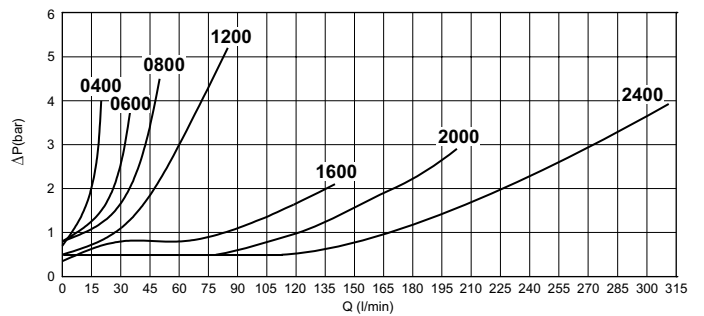
Max. Leakage (0 ÷ 5 drops/min)	0 ÷ 0.25 cm ³ /min
Hydraulic fluid	DIN 51524 Mineral oils
Fluid viscosity	10 ÷ 500 mm ² /s
Fluid temperature	-25°C ÷ 75°C
Ambient temperature	-25°C ÷ 60°C
Max. contamin. level class with filter	ISO 4406:1999 - class 19/17/14

HYDRAULIC SYMBOL



Code	C	Flow max (l/min)	Pressure max (bar)	L (mm)	Ch (mm)	Weight (kg)
VRU0400	1/4 BSP	20	350	59	19	0.10
VRU0600	3/8 BSP	35	350	66	24	0.17
VRU0800	1/2 BSP	50	350	78	27	0.24
VRU1200	3/4 BSP	85	300	90	36	0.49
VRU1600	1 BSP	140	250	112	40	0.67
VRU2000	1- 1/4 BSP	200	250	142	55	1.68
VRU2400	1- 1/2 BSP	310	210	155	60	2.10

PRESSURE DROPS



Fluid used: mineral based oil with viscosity 15 mm²/s at 40°C.

ORDERING CODE

VRU = Check valve

VRU

Series: **VRU**

Size: **04, 06, 08, 12, 16, 20, 24**

- 04** = 1/4 BSP
- 06** = 3/8 BSP
- 08** = 1/2 BSP
- 12** = 3/4 BSP
- 16** = 1 BSP
- 20** = 1- 1/4 BSP
- 24** = 1- 1/2 BSP

Setting pressure:

CODE	04	06	08	12	16	20	24
00	0.7*	0.5*	0.5*	0.5*	0.5*	0.5*	0.5*
02				2*	2*		
03	4.5*	3*	3*	3*			
05	7.5*	5*	5*				
10	10*				10*		

Standard
 * Pressure - bar