

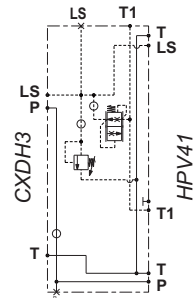
INTERFACE FOR PROPORTIONAL DIRECTIONAL VALVES HPV41



Interface between HPV41 and CDC3 / CD3 / CX3 / CXDH3 / CDH3

- HSIF interface hydraulically connects the elements of proportional valves CX3/CXDH3 or ON/OFF valves CDC3/CD3/CDH3 with the elements of proportional valve HPV 41. This type of combination is highly appreciated in those cases involving great differences in flow between the controlled actuators.
- The HSIF module must be inserted into the proportional valve configuration between the last HPV41 working section and the first CDC3/CD3/CX3/CXDH3/CDH3 working section. Up to eight elements of the HPV41 and eight elements of the CDC3/CD3/CX3/CXDH3/CDH3 can be installed. The HSif interface replace the inlet module for CDC3/CD3/CX3/CXDH3/CDH3.
- With the HSIF interface use the FUH outlet module.
- Cast iron zinc plated body.

HYDRAULIC SYMBOL



ORDERING CODE

HSIF00 Interface

41 HPV Type (HPV 41)

05033 Identifying code

FEATURES

Max. operating pressure	300 bar
Max. Flow	80 l/min
Fluid viscosity	10 ÷ 500 mm ² /s
Fluid temperature	-25° ÷ 75° C
Ambient temperature	-25°C ÷ 60°C
Max. contamination level (filter β ₂₅ ≥ 75)	ISO 4406:1999: class 21/19/16 NAS 1638: class 10
Weight	3.8 kg

4

OVERALL DIMENSIONS

