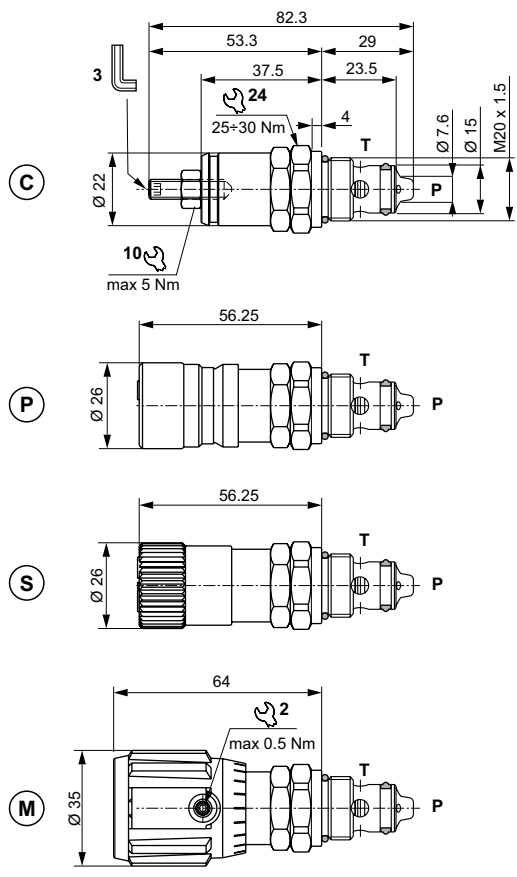


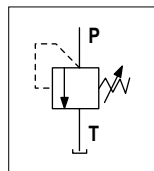
DIRECT ACTING PRESSURE RELIEF VALVES

1



00012006 Spare seals kit

HYDRAULIC SYMBOL



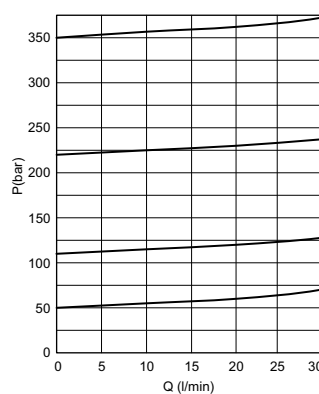
The direct acting relief valve limits the pressure in a hydraulic circuit. It raises the safety level by making it impossible for the plant operators to set a higher pressure rating, than that specified in the catalogue. This is limited by a pack spring with a mechanical stop. It has a galvanised steel body. The guided ball poppet is in tempered and ground steel.

HYDRAULIC FEATURES

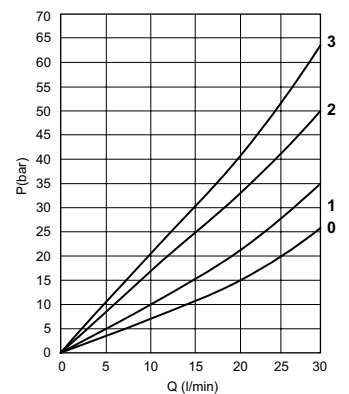
Max. working pressure	350 bar
Setting range:	
Spring 0 (white)	max 50 bar
Spring 1 (green)	max 110 bar
Spring 2 (yellow)	max 220 bar
Spring 3 (red)	max 350 bar
Max. Flow	30 l/min
Hydraulic fluid	DIN 51524 Mineral oils
Fluid viscosity	10 ÷ 500 mm ² /s
Fluid temperature	-25°C ÷ 75°C
Ambient temperature	-25°C ÷ 60°C
Max. contamin. level class with filter	ISO 4406:1999 - class 19/17/14
Weight	0.16 kg
Tightening torque	30 ÷ 35 Nm
Cavity (M20 x 1.5)	CN044001 (See section 17)

The minimum permissible setting pressure depending on the spring: see curves below

PRESSURE-FLOW RATE

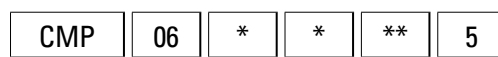


MIN.SETTING PRESSURE



0 = CMP06*0 - 1 = CMP06*1.. - 2 = CMP06*2.. - 3 = CMP06*3..
Fluid used: mineral based oil with viscosity 46 mm²/s at 40°C.

ORDERING CODE



CMP = Pressure relief valve

06 = M20 x 1.5

C = Screw
P = **C** + Plug no detachable closing (unremovable version)
S = **C** + Plug detachable closing
M = Plastic knob

5 = Serial No.

00 = No variants
V1 = Viton

0 = Max 50 bar (white spring)
1 = Max 110 bar (green spring)
2 = Max 220 bar (yellow spring)
3 = Max 350 bar (red spring)