

# AM.5.CP... MODULAR BACK PRESSURE VALVES CETOP 5



**AM.5.CP...**  
CMP.20... BFP CARTRIDGE CATALOGUE  
SCREWS AND STUDS CH. IV PAGE 36

Back pressure valves type AM.5.CP are direct acting damped maximum pressure in-line valves fitted with bypass non-return valves. They are obtainable within the adjustable range 2 ÷ 250 bar.

Adjustment is by means of a grub screw or a plastic knob, on ports A or B (single), or on AB double.

The cartridge is direct acting type CMP.20.

These valves are especially used on vertical working cylinders with dragging loads.

**For the minimum permissible setting pressure depending on the spring, see the minimum pressure setting curve**

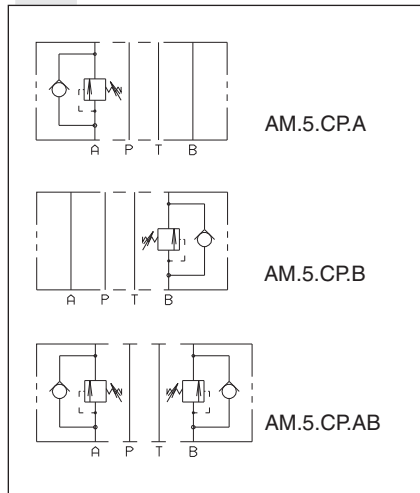
Max. operating pressure	350 bar
Setting ranges:	spring 1 30 bar
	spring 2 140 bar
	spring 3 250 bar
Max. flow	80 l/min
Hydraulic fluids	Mineral oils DIN 51524
Fluid viscosity	10 ÷ 500 mm <sup>2</sup> /s
Fluid temperature	-25°C ÷ 75°C
Ambient temperature	-25°C ÷ 60°C
Max. contamination level	class 10 in accordance with NAS 1638 with filter $\beta_{25} \geq 75$
Weight AM.5.CP.A/B...	5,3 Kg
Weight AM.5.CP.AB...	7,2 Kg

## ORDERING CODE

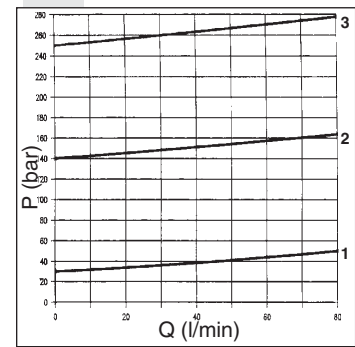
4

<b>AM</b>	Modular valve
<b>5</b>	CETOP 5/NG10
<b>CP</b>	Back pressure valve
<b>**</b>	Control on lines <b>A / B / AB</b>
<b>*</b>	Type of adjustment <b>M</b> = Plastic knob <b>C</b> = Grub screw
<b>*</b>	Setting ranges <b>1</b> = max. 30 bar ( <b>white spring</b> ) <b>2</b> = max. 140 bar ( <b>yellow spring</b> ) <b>3</b> = max. 250 bar ( <b>green spring</b> )
<b>**</b>	<b>00</b> = No variant <b>V1</b> = Viton
<b>3</b>	Serial No.

## HYDRAULIC SYMBOLS

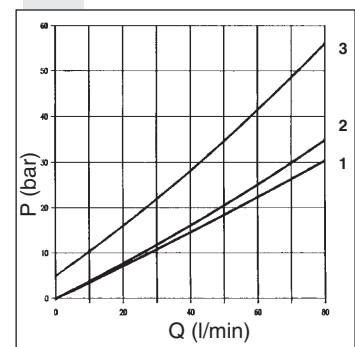


## PRESSURE - FLOW RATE

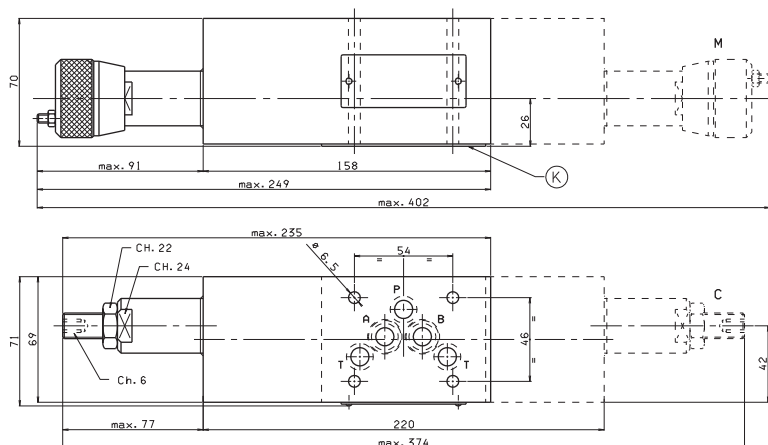


Curves n° 1 - 2 - 3 = setting ranges

## MINIMUM SETTING PRESSURE



## OVERALL DIMENSIONS



**K** = OR plate

Type of adjustment

**M** Plastic knob

**C** Grub screw

Support plane specifications

