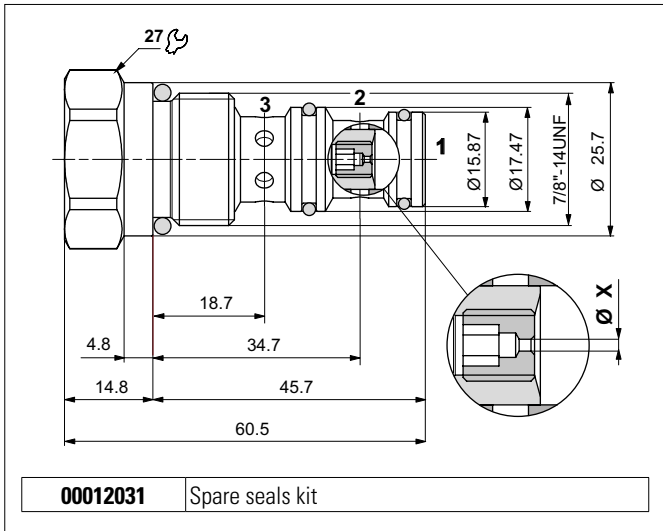


PRIORITY FLOW CONTROL VALVE



The priority flow control valve sends a constant flow from branch 1, first to priority branch 3 and then the remaining flow to overflow branch 2, regardless of the downstream oil pressure.

Both branches 2 and 3 can be pressurised.

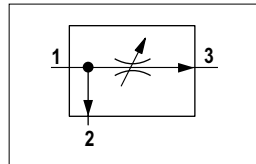
The flow is reduced by the control hole X which determines the flow rate.

It has a galvanised steel body. The compensator plunger is in tempered and ground steel.

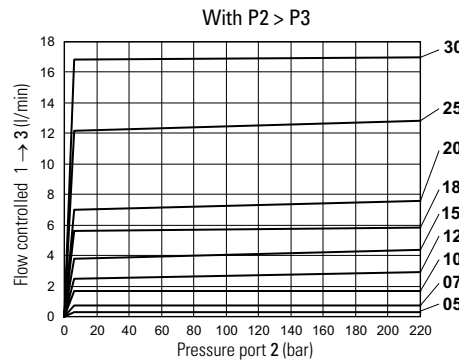
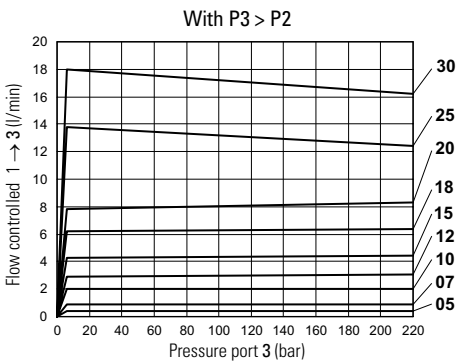
HYDRAULIC FEATURES

Max. working pressure	210 bar
ΔP of regulation	6.1 ÷ 6.7 bar
Input max. Flow	50 l/min
Control max. Flow	17 l/min
Hydraulic fluid	DIN 51524 Mineral oils
Fluid viscosity	10 ÷ 500 mm ² /s
Fluid temperature	-25°C ÷ 75°C
Ambient temperature	-25°C ÷ 60°C
Max. contamin. level class with filter	ISO 4406:1999 - class 19/17/14
Weight	0.2 kg
Tightening torque	30 ÷ 40 Nm
Cavity (7/8 - 14 UNF)	CD019006 (See section 17)

HYDRAULIC SYMBOL



FLOW CONTROLLED



Fluid used: mineral based oil with viscosity 46 mm²/s at 40°C.

The regulated flow rate depends on the inlet flow rate and the oil viscosity.

Table 1

Code	$\varnothing X$ (mm) **	Nominal flow (l/min) *
05	0.5	0.3
07	0.7	0.7
10	1.0	1.7
12	1.2	2.5
15	1.5	4.0
18	1.8	5.6
20	2.0	7.0
25	2.5	12.2
30	3.0	17.0

* Flow rate tolerance: $\pm 15\%$ up to 5 l/min, $\pm 10\%$ over 5 l/min

** Tolerance on hole: ± 0.02 mm

ORDERING CODE

