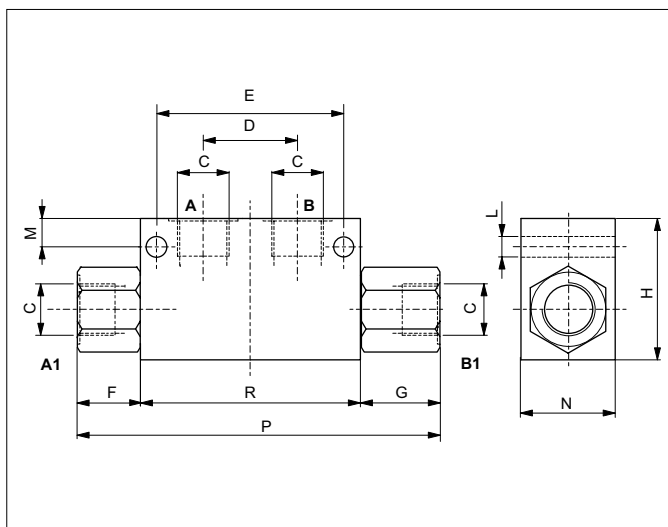


## SINGLE AND DOUBLE ACTING PILOT CHECK VALVES - IN-LINE MOUNTING



With the acting pilot check valves, a single or double acting actuator can be locked in any position.

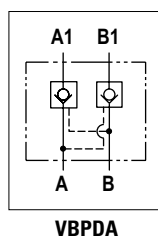
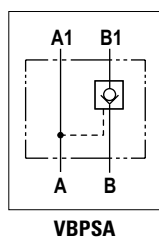
Sealing is guaranteed by tempered, ground, tapered steel poppets, releasing is by venting the piloted openings "A" and "B" according to the valve pilot ratio. The valves can be mounted in any position and are protected externally by a zinc plating.

### HYDRAULIC FEATURES

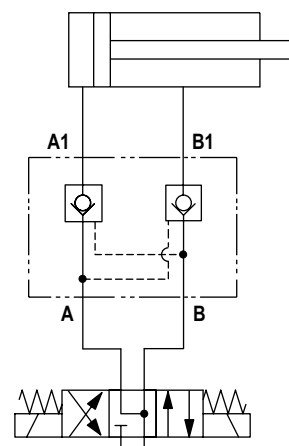
Max. Leakage (0 ÷ 5 drops/min)	0 ÷ 0.25 cm <sup>3</sup> /min
Hydraulic fluid	DIN 51524 Mineral oils
Fluid viscosity	10 ÷ 500 mm <sup>2</sup> /s
Fluid temperature	-25°C ÷ 75°C
Ambient temperature	-25°C ÷ 60°C
Max. contamin. level class with filter	ISO 4406:1999 - class 19/17/14

Code	C	Flow max (l/min)	Pressure max (bar)	D (mm)	E (mm)	F (mm)	G (mm)	H (mm)	L (mm)	M (mm)	N (mm)	P (mm)	R (mm)	Weight (kg)	Pilot ratio
VBPSA0400	1/4 BSP	20	350	30	60	20	27	45	6.5	9	30	117	70	0.76	1:4
VBPSA0600	3/8 BSP	25	350	30	60	20	27	45	6.5	9	30	117	70	0.72	1:4
VBPSA0918	9/16-18 UNF	20	350	30	60	30.5	30.5	45	6.5	9	30	131	70	0.72	1:4
VBPSA0800	1/2 BSP	45	300	40	75	35	42	60	8	17	40	170	90	1.65	1:4
VBPSA1200	3/4 BSP	85	280	60	104	46	46	70	9	16	50	212	120	3.10	1:3.6
VBPDA0400	1/4 BSP	20	350	30	60	27	27	45	6.5	9	30	124	70	0.80	1:4
VBPDA0600	3/8 BSP	25	350	30	60	27	27	45	6.5	9	30	124	70	0.75	1:4
VBPDA0918	9/16-18 UNF	20	350	30	60	30.5	30.5	45	6.5	9	30	131	70	0.75	1:4
VBPDA0800	1/2 BSP	45	300	40	75	42	42	60	8	17	40	174	90	1.78	1:4
VBPDA1200	3/4 BSP	85	280	60	104	46	46	70	9	16	50	212	120	3.25	1:3.6

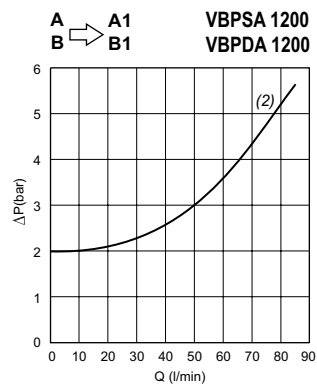
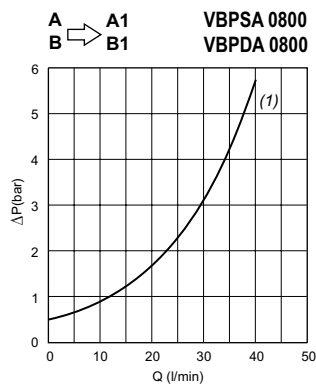
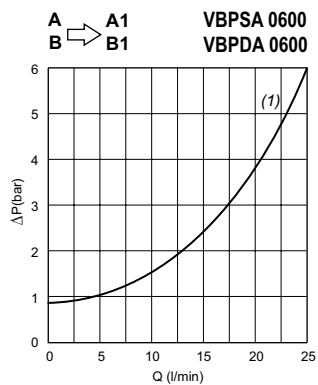
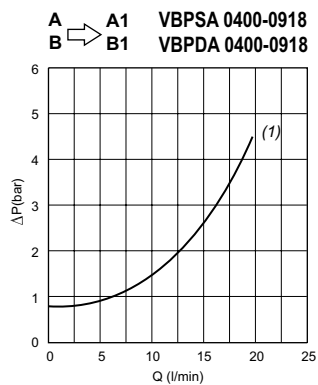
### HYDRAULIC SYMBOLS



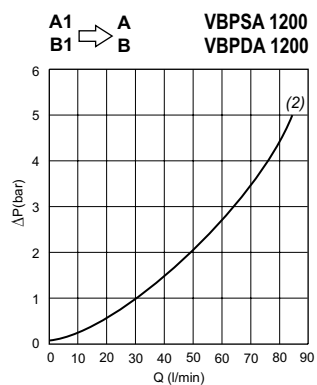
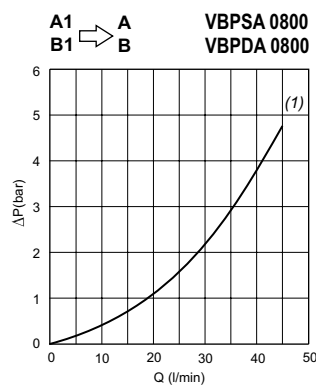
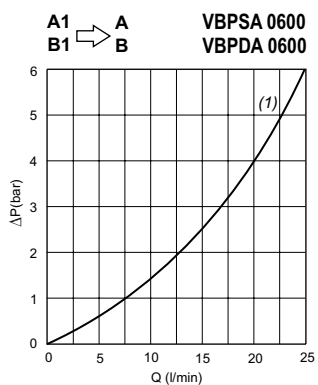
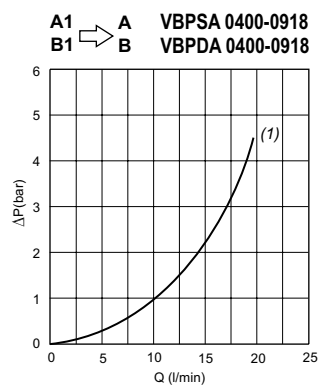
### SERVICE EXAMPLE



## PRESSURE DROPS

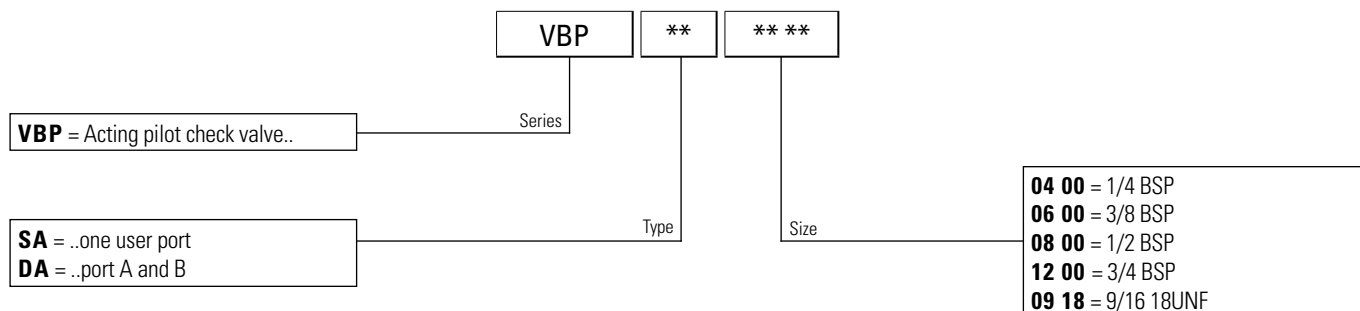


6

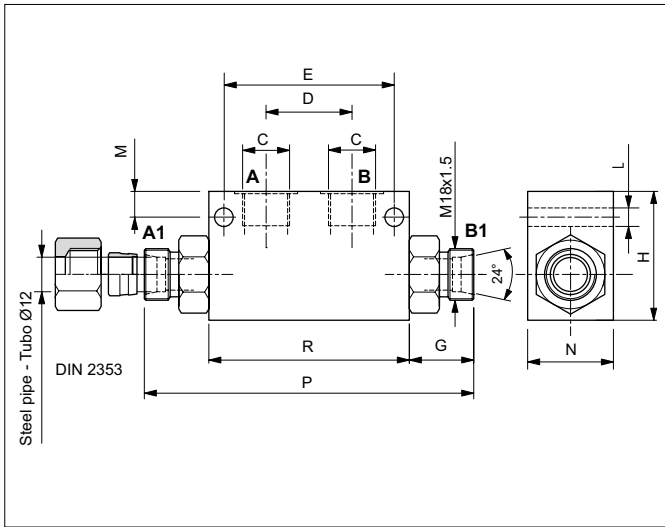


(1) Fluid used: mineral based oil with viscosity 15 mm<sup>2</sup>/s at 40°C.  
(2) Fluid used: mineral based oil with viscosity 24 mm<sup>2</sup>/s at 50°C.

## ORDERING CODE



## SINGLE AND DOUBLE ACTING PILOT CHECK VALVES-DIN 2353 PORTS - IN-LINE MOUNTING



With the acting pilot check valves, a single or double acting actuator can be locked in any position.

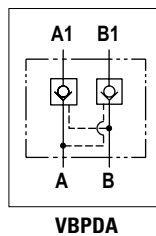
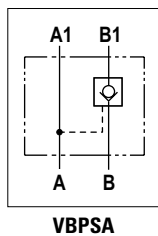
Sealing is guaranteed by tempered, ground, tapered steel poppets, releasing is by venting the piloted openings "A" and "B" according to the valve pilot ratio. The valves can be mounted in any position and are protected externally by a zinc plating.

### HYDRAULIC FEATURES

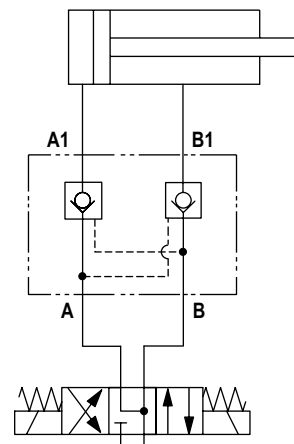
Max. Leakage (0 ÷ 5 drops/min)	0 ÷ 0.25 cm <sup>3</sup> /min
Hydraulic fluid	DIN 51524 Mineral oils
Fluid viscosity	10 ÷ 500 mm <sup>2</sup> /s
Fluid temperature	-25°C ÷ 75°C
Ambient temperature	-25°C ÷ 60°C
Max. contamin. level class with filter	ISO 4406:1999 - class 19/17/14

Code	C	Flow max (l/min)	Pressure max (bar)	D (mm)	E (mm)	G (mm)	H (mm)	L (mm)	M (mm)	N (mm)	P (mm)	R (mm)	Weight (kg)	Pilot ratio
VBPSA0412	1/4 BSP	20	350	30	60	22.5	45	6.5	9	30	115	70	0.83	1:4
VBPSA0612	3/8 BSP	25	350	30	60	22.5	45	6.5	9	30	115	70	0.75	1:4
VBPDA0412	1/4 BSP	20	350	30	60	22.5	45	6.5	9	30	115	70	0.83	1:4
VBPDA0612	3/8 BSP	25	350	30	60	22.5	45	6.5	9	30	115	70	0.75	1:4

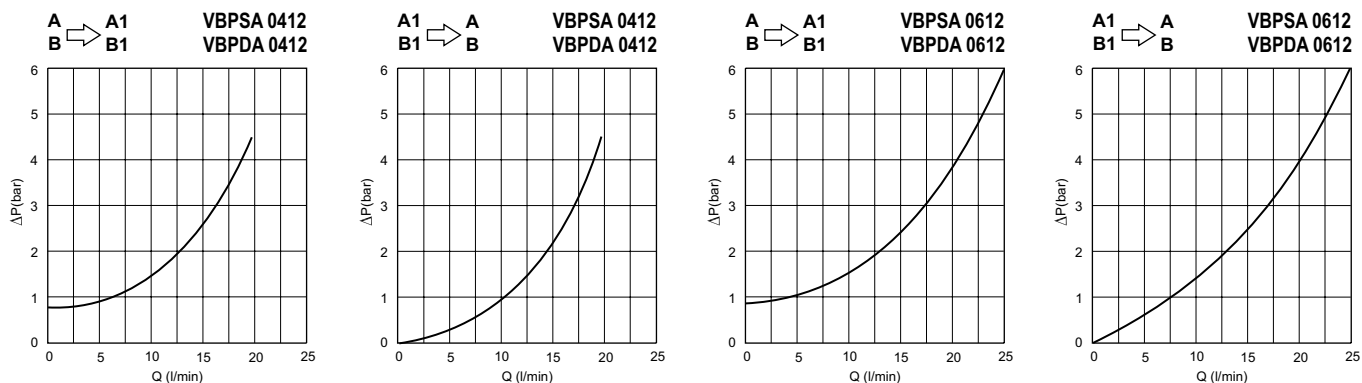
### HYDRAULIC SYMBOLS



### SERVICE EXAMPLE



## PRESSURE DROPS



Fluid used: mineral based oil with viscosity 15 mm<sup>2</sup>/s at 40°C.

6

## ACCESSORIES AND SPARE PARTS

	<p><b>Q51435044</b></p>	<p>Copper Washer</p>		<p><b>OD050612L</b></p>	<p>DIN Banjo</p>
	<p><b>RF05060000</b></p>	<p>Hollow screw</p>		<p>1: <b>E341L12</b> 2: <b>E342L12</b></p>	<p>Nut (spare) Cutting ring (spare)</p>
	<p><b>OT0506T12</b></p>	<p>Banjo</p>		<p>Assembly example with steel pipe Ø 12 mm DIN 2353</p>	

## ORDERING CODE

