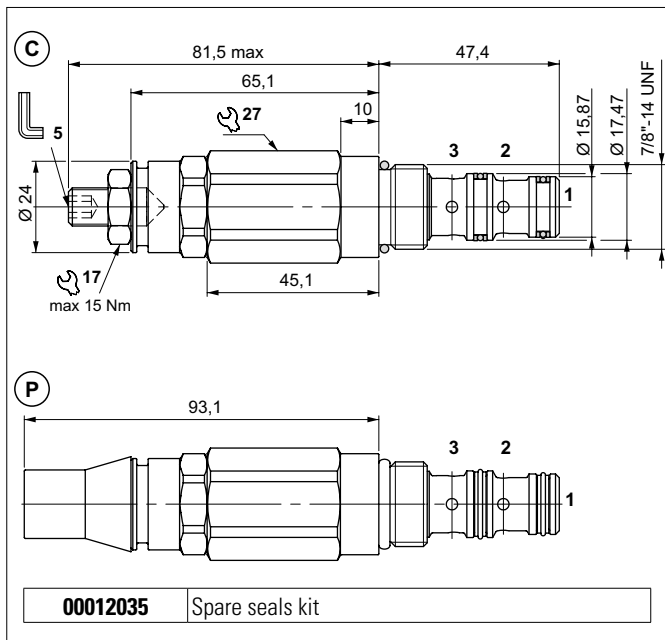


SEQUENCE VALVES

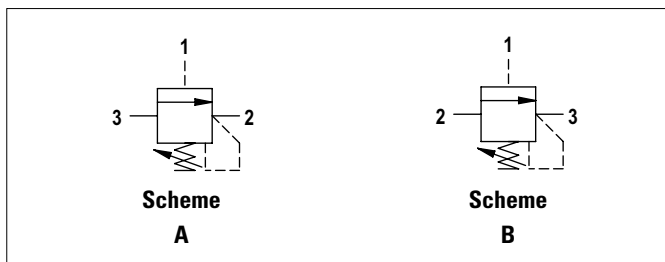


The 3-way sequence valve connects a pressurised branch to drain line when the pilot branch calibration setting is reached (port 1). Slight leakage is tolerated for this type of valve. It has a galvanised steel body. The plunger is in tempered and ground steel.

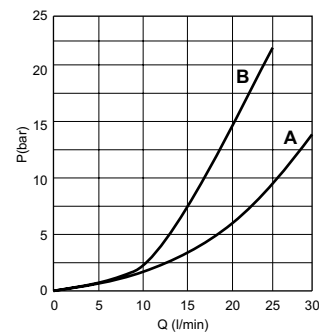
HYDRAULIC FEATURES

Max. pressure	400 bar
Max. Flow	30 l/min
Hydraulic fluid	DIN 51524 Mineral oils
Fluid viscosity	10 ÷ 500 mm ² /s
Fluid temperature	-25°C ÷ 75°C
Ambient temperature	-25°C ÷ 60°C
Max. contamin. level class with filter	ISO 4406:1999 - class 19/17/14
Weight	0.3 kg
Tightening torque	30 ÷ 40 Nm
Cavity (7/8 - 14 UNF)	CD019006 (See section 17)

HYDRAULIC SYMBOL



PRESSURE DROPS



Fluid used: mineral based oil with viscosity 46 mm²/s at 40°C.

Spool scheme	Connections	Flow max l/min
A	3 → 2	30
B	2 → 3	25

ORDERING CODE

