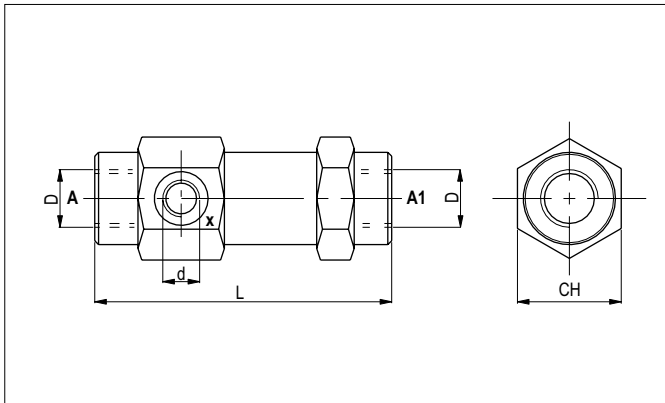


## SINGLE ACTING PILOTED CHECK VALVES - IN-LINE MOUNTING



The pilot-operated check valve blocks a single-acting actuator in any position. Tapered poppet in tempered and ground steel, released by feeding the piloted opening X. Can be mounted in any position; galvanised.

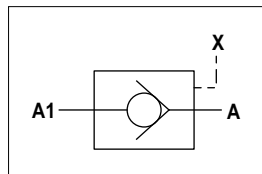
6

Code	Flow max (l/min)	Pressure max (bar)	L (mm)	Ch (mm)	Piloting ratio	d	D	Weight (kg)
VRS07	12	350	103	36	1:9	1/4 BSP	1/4 BSP	0.65
VRS10	30	310	109	40	1:6	1/4 BSP	3/8 BSP	0.82
VRS13	45	310	120	42	1:4.5	1/4 BSP	1/2 BSP	0.96
VRS19	85	300	131	55	1:3.7	1/4 BSP	3/4 BSP	1.95

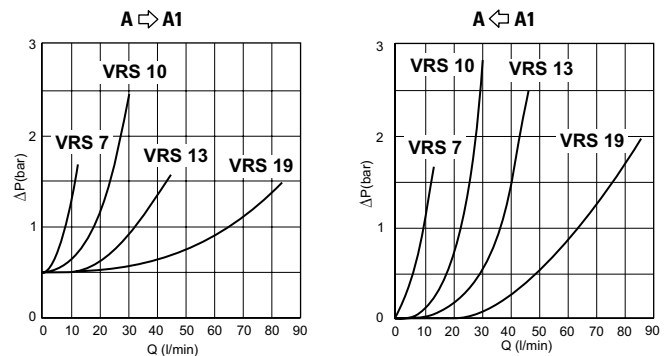
### HYDRAULIC FEATURES

Max. working pressure	350 bar
Standard opening pressure	0.5 bar
Max. Leakage (0 ÷ 20 drops/min)	0 ÷ 1 cm <sup>3</sup> /min
Piloting ratio	See table
Max. Flow	85 l/min
Hydraulic fluid	DIN 51524 Mineral oils
Fluid viscosity	2.8 ÷ 380 mm <sup>2</sup> /s
Fluid temperature	-25°C ÷ 75°C
Ambient temperature	-25°C ÷ 60°C
Max. contamin. level class with filter	ISO 4406:1999 - class 19/17/14
Weight	See table

### HYDRAULIC SYMBOL



### PRESSURE DROPS - FLOW



Fluid used: mineral based oil with viscosity 24 mm<sup>2</sup>/s at 50°C.

### ORDERING CODE

