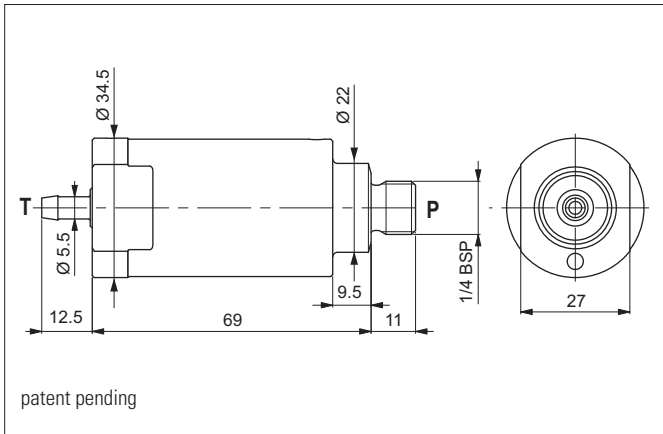


SOFT START VALVE - IN-LINE MOUNTING

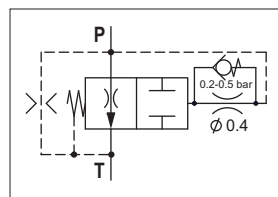


Valve used on power units to generate a flow rate ramp on the actuator to delay system pressurisation and allow the single phase motor to reach the required speed.

Fitted directly on the auxiliary pressure delivery line of unit 1 pumps or on the delivery branch between pump and unidirectional valve.

The body is in steel and the tapered poppet in tempered and ground steel.

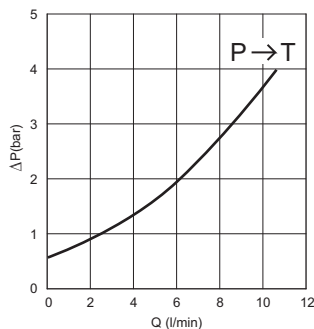
HYDRAULIC SYMBOL



HYDRAULIC FEATURES

| | |
|---|--------------------------------|
| Max. working pressure | 210 bar |
| Flow | 8 ÷ 15 l/min |
| Rump up time (at 100 bar of working pressure) | 600 ms |
| Max. Leakage at 100 bar | 0.8 l/min |
| Operating frequency | 0.7 Hz |
| Working Temperature | -25°C ÷ 60°C |
| Hydraulic fluid | DIN 51524 Mineral oils |
| Fluid viscosity | 10 ÷ 500 mm ² /s |
| Fluid temperature | -25°C ÷ 75°C |
| Max. contamin. level class with filter | ISO 4406:1999 - class 19/17/14 |
| Weight | 0.4 kg |
| Tightening torque | 25 ÷ 30 Nm |

PRESSURE DROPS



Fluid used: mineral based oil with viscosity 32 mm²/s at 40°C.

ORDERING CODE

