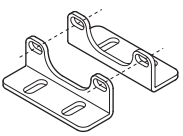
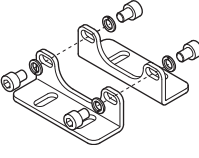
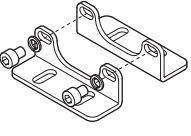
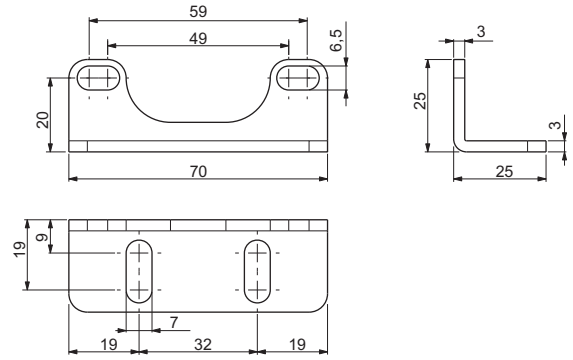
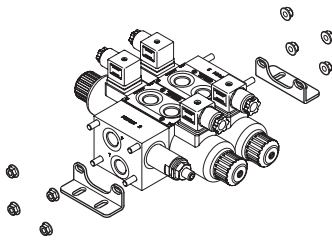


Code	Type
V89980000	 <p>SIZE 6 - ON/OFF and proportional valves Kit supplied with the valves, composed by: - No. 2 feet</p>
V89B60000 (*)	 <p>SIZE 6 - Pre and post compensated valves Kit supplied on request (**) composed by: - No. 2 feet - No. 4 screws - No. 4 washers</p> <p>Screw tightening torque: 10Nm</p>
V89B60001 (*)	 <p>SIZE 10 - ON/OFF valves Kit supplied on request (**) composed by: - No. 2 feet - No. 2 screws - No. 2 washers</p> <p>Screw tightening torque: 10Nm</p>

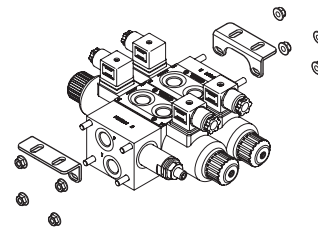


* Fixing feet can not be used with HSIF interface module unit.
** If the kit is not required, the valve can be fixed by the fixing holes on the bottom faces of the inlet and outlet modules (see drawing on page 57 and 80).

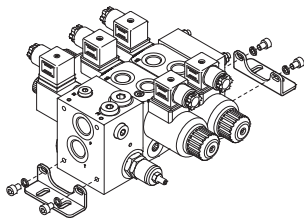
Feet mounting example



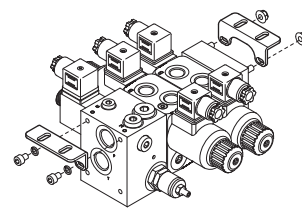
Intel module FE10, outlet module FU, mounting on BOTTOM position (standard mounting)



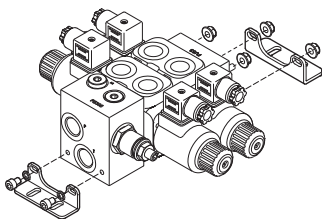
Intel module FE10, outlet module FU, mounting on TOP position (to be specify)



Intel module FEH30PQ, outlet module FUH, mounting on BOTTOM position (standard mounting)



Intel module FEH30PQ, outlet module FUH, mounting on TOP position (to be specify)



Intel module FE305, outlet module FU5, mounting on BOTTOM position (standard mounting)