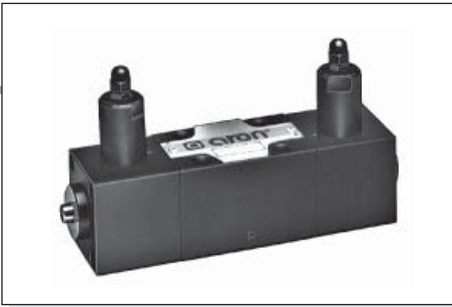


AD3RI... AUTOMATIC RECIPROCATING VALVES CETOP 3



AD3RI...

This valve type is characterized by fully hydraulic operation, as it takes advantage of the system pressure rise to cause an automatic and continuous inversion of the utilization. The change-over takes place when the system pressure exceeds the inversion valves calibration pressure, and therefore also in not predetermined positions. At cylinder stroke end, the overall maximum pressure valve should be adjusted on a value 30% higher than the system operating pressure.

The inverter valves pressure calibration values should be 15% lower than that of the overall maximum pressure valve, and 15% higher than the maximum operating pressure.

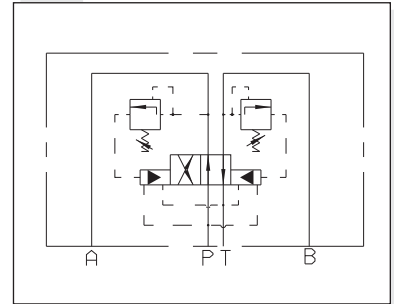
Note: to operate the push button emergency, a minimum pressure of 3 bar on the actuator is needed.

| | |
|---------------------------|---|
| Max. operating pressure | 320 bar |
| Max. pressure port T | 160 bar |
| Min. recommended pressure | 15 bar |
| Max. flow | 25 l/min |
| Min. flow | 2 l/min |
| Setting ranges: | Spring 1 15 ÷ 50 bar |
| | Spring 2 20 ÷ 140 bar |
| | Spring 3 50 ÷ 320 bar |
| Fluid viscosity | 10 ÷ 60 mm ² /s |
| Fluid temperature | -20°C ÷ 75°C |
| Max. contamination level | class 10 in accordance with NAS 1638 with filter $\beta_{25} \geq 75$ |
| Weight | 2,3 Kg |

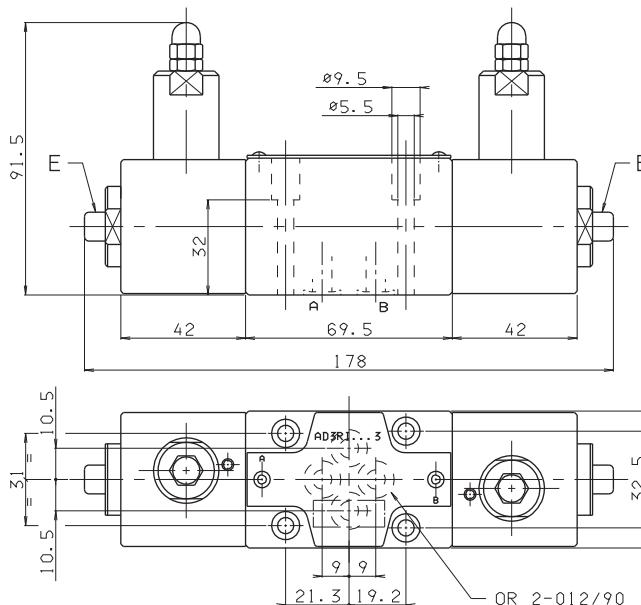
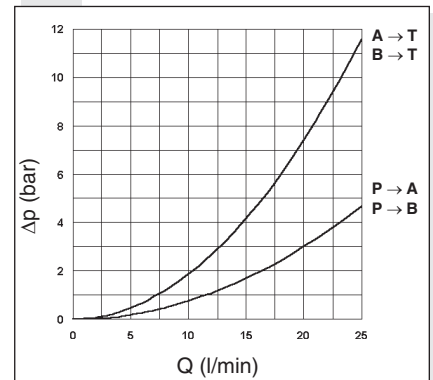
ORDERING CODE

- AD** Directional valve
- 3** CETOP 3/NG6
- RI** Automatic reciprocating valve hydraulically operated automatic reciprocation
- 211** Scheme
- Z** No voltage
- *** Setting ranges:
1 = 15 ÷ 50 bar
2 = 20 ÷ 140 bar
3 = 50 ÷ 320 bar
- **** 00 = No variant
V1 = Viton
- 3** Serial No.

HYDRAULIC SYMBOL



PRESSURE DROPS



E = Manual override

Fixing screws UNI 5931 M5x40 with material specifications min. 8.8
Tightening torque 5 Nm / 0.5 Kgm

Support plane specifications

