

INTERMEDIATE ELEMENT WITH FLOW REGULATOR ON A AND B LINES

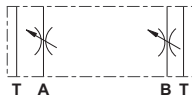


- Intermediate element V08000005 with flow regulator on A and B lines
- Intermediate mounting to combine with valves CM3F/CM3P/CM3M
 - One way non-compensated throttle valves adjustable by means of a grub screw on A and B lines.
 - Maximum flow 20 l/min.
 - Cast iron zinc plated body.

FEATURES

Max. operating pressure	250 bar
Flow rate regulation	on 6 screw turns
Max. Flow	20 l/min
Hydraulic fluid	DIN 51524 Mineral oils
Fluid viscosity	10 ÷ 500 mm ² /s
Fluid temperature	-25°C ÷ 75°C
Ambient temperature	-25°C ÷ 60°C
Max. contamination level (filter β ₂₅ ≥ 75)	ISO 4406:1999: class 21/19/16 NAS 1638: class 10
Weight	1.3 kg

HYDRAULIC SYMBOL

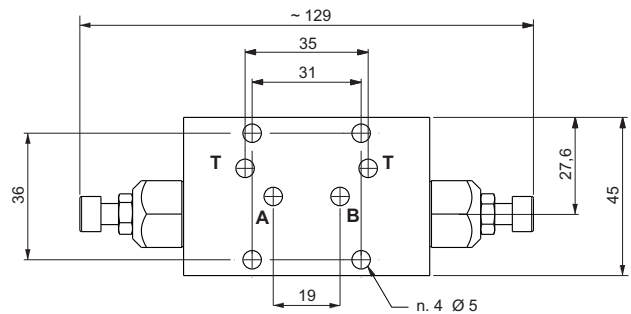
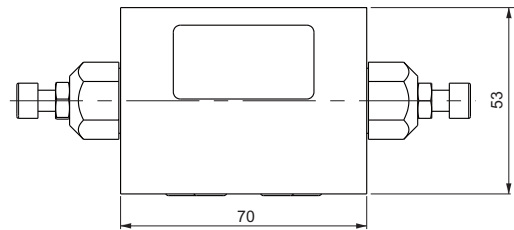


ORDERING CODE

V08000005

Element with flow regulator on A and B lines

OVERALL DIMENSIONS



FLOW REGULATION

