

## INLET MODULE UNITS WITH LS LINE WITH PRESSURE RELIEF VALVE

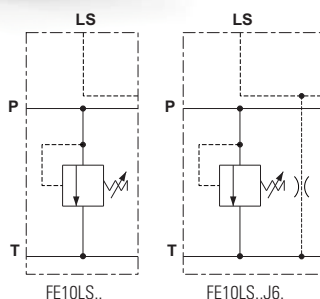


Module units FE10LS with LS line and CMP10 adjustable pressure relief valve.

- Manual adjustment with a grub screw or plastic knob.
- Threaded ports P-T, G3/8" and LS, G1/4".
- Maximum flow 40 l/min.
- Aluminum body.

1

### HYDRAULIC SYMBOL



### ORDERING CODE

**FE10LS** Inlet module unit (up to 40 l/min) with pressure relief valve and LS line

**3** Size

Ports:  
**1** = G3/8" (P,T ports)  
 G1/4" (LS port)

Adjustment:  
**M** = Plastic knob  
**C** = Grub screw

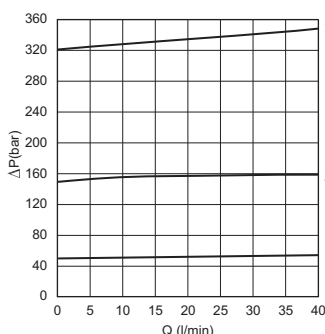
Setting ranges  
**1** = max. 50 bar (white spring)  
**2** = max. 150 bar (yellow spring)  
**3** = max. 320 bar \*\* (green spring)

\*\*  
**00** = No variant  
**J6** = With LS bleed  
**V1** = Viton

**2** Serial No.

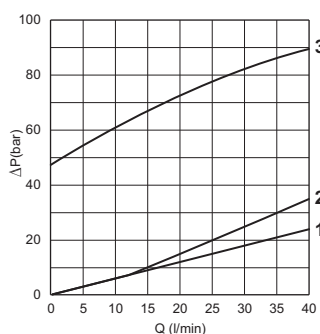
(\*\*) Setting referred to the maximum pressure reached from the relief valve. Do not exceed the maximum working pressure 250 bar.

### PRESSURE-FLOW RATE



**1** = max 50 bar - **2** = max 150 bar - **3** = max 320 bar  
 Fluid used: mineral based oil with viscosity 46 mm<sup>2</sup>/s at 40°C.

### MIN.SETTING PRESSURE



### FEATURES

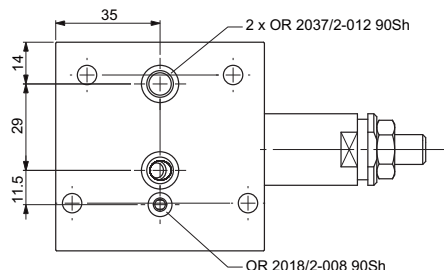
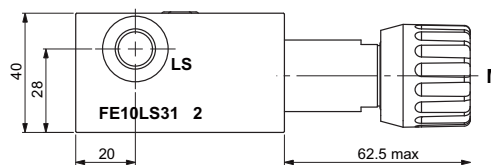
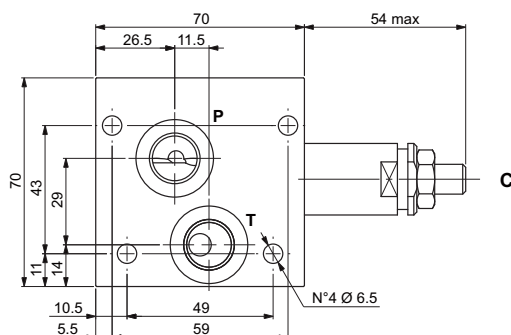
Max. operating pressure	250 bar
Max. Flow	40 l/min
Hydraulic fluid	DIN 51524 Mineral oils
Fluid viscosity	10 ÷ 500 mm <sup>2</sup> /s
Fluid temperature	-25°C ÷ 75°C
Ambient temperature	-25°C ÷ 60°C
Max. contamination level (filter β <sub>25</sub> ≥ 75)	ISO 4406:1999: class 21/19/16 NAS 1638: class 10
Weight	0.6 kg

### Pressure relief valve (CMP10...)

Setting range (*):	
Spring 1	max 50 bar
Spring 2	max 150 bar
Spring 3	max 320 bar

(\*) The minimum permissible setting pressure depending on the spring: see curves.

### OVERALL DIMENSIONS



C = Grub screw  
 M = Plastic knob