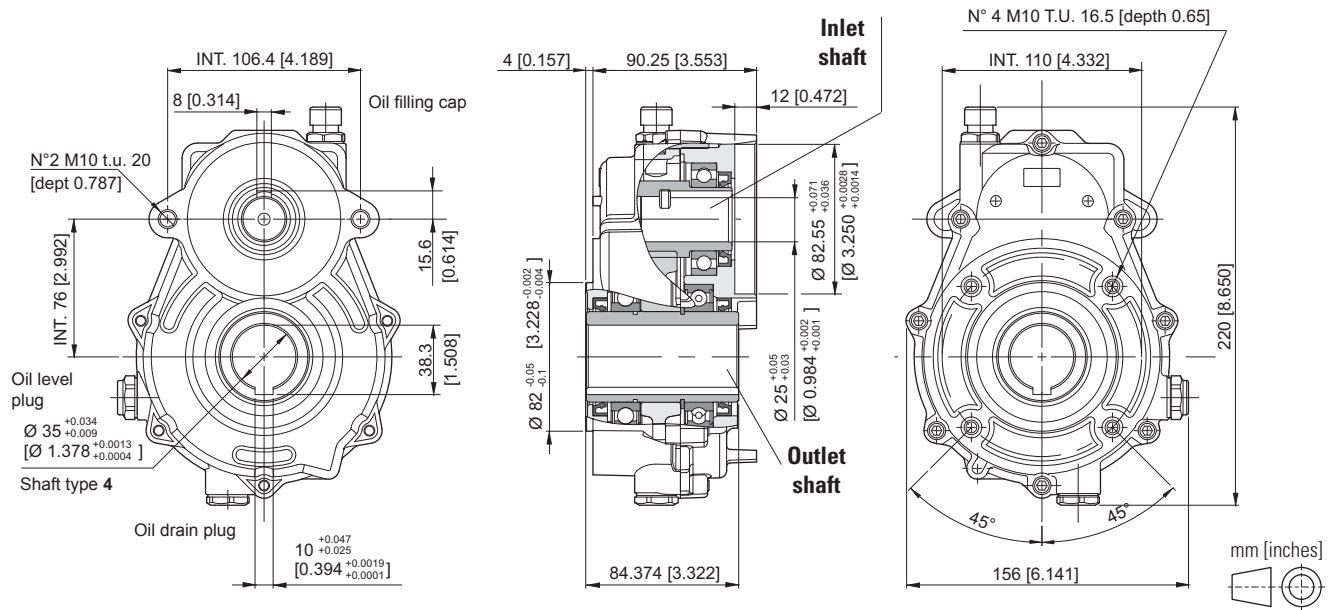
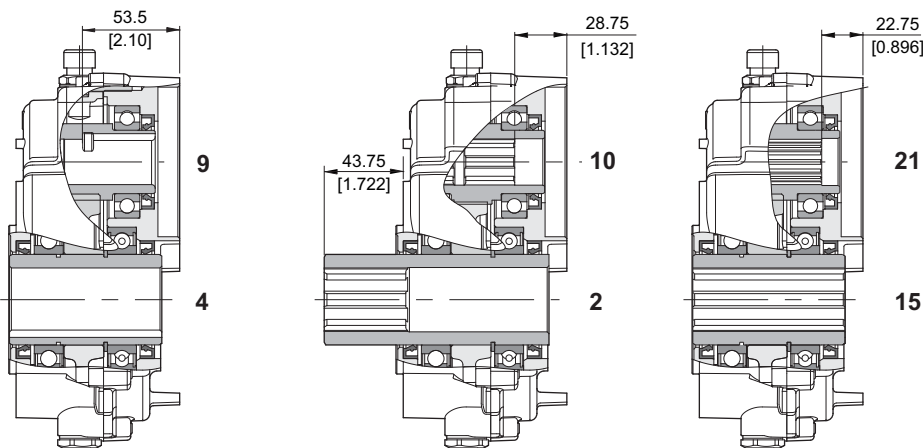


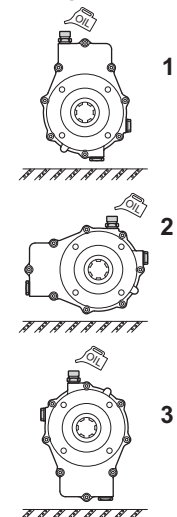
SPEED REDUCER GEARBOX SAE A



Shaft



Mounting positions



ORDERING CODE

RD33/SAE - ** -1/ *** - ** - *

RD33/SAE = speed reducers (aluminium body)

P.T.O.

2 = Female 1" 3/8 DIN 9611 (long)
4 = Female Ø 35 mm
15 = Female 1" 3/8 DIN 9611 (short)

Transmission ratio

0,66 = 1.5 : 1
0,50 = 2.0 : 1
0,40 = 2.5 : 1
0,33 = 3.0 : 1
0,29 = 3.4 : 1
0,26 = 3.8 : 1

Mounting positions
1 / 2 / 3

Input shaft

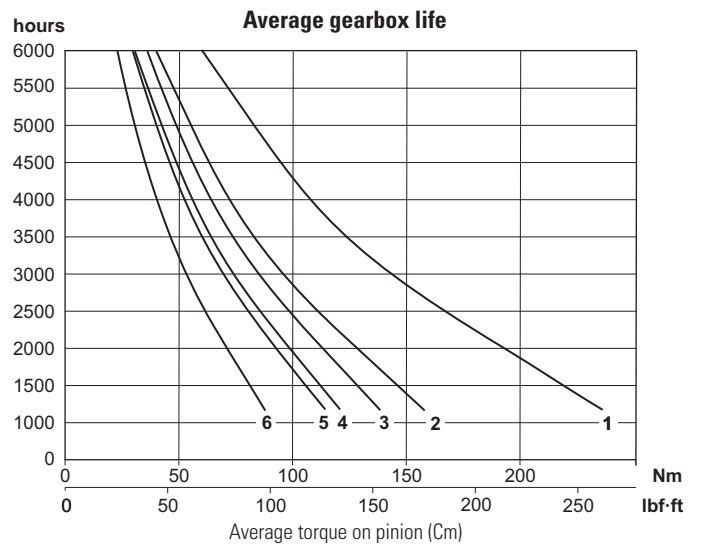
9 = Female Ø 25 *
10 = Female SAE 6B
21 = Female Z14 DIN 5482 (25x22)

* Only for transmission ratio: 0,66 - 0,50 - 0,40 - 0,33

Coupling to the hydraulic motor to be required at our sales department.

TECHNICAL DATA

Transmission ratio	Maximum torque Nm [lbf-ft]		Weight kg [lb]
	200 rpm		
	C1*	C2*	
0.66	236 [174]	124 [91]	4,3 [9.5]
0.50	158 [117]	83 [61]	4,4 [9.7]
0.40	139 [103]	73 [54]	4,3 [9.5]
0.33	121 [89]	64 [47]	4,4 [9.7]
0.29	114 [84]	60 [44]	4,7 [10.4]
0.26	88 [65]	46 [34]	4,4 [9.7]

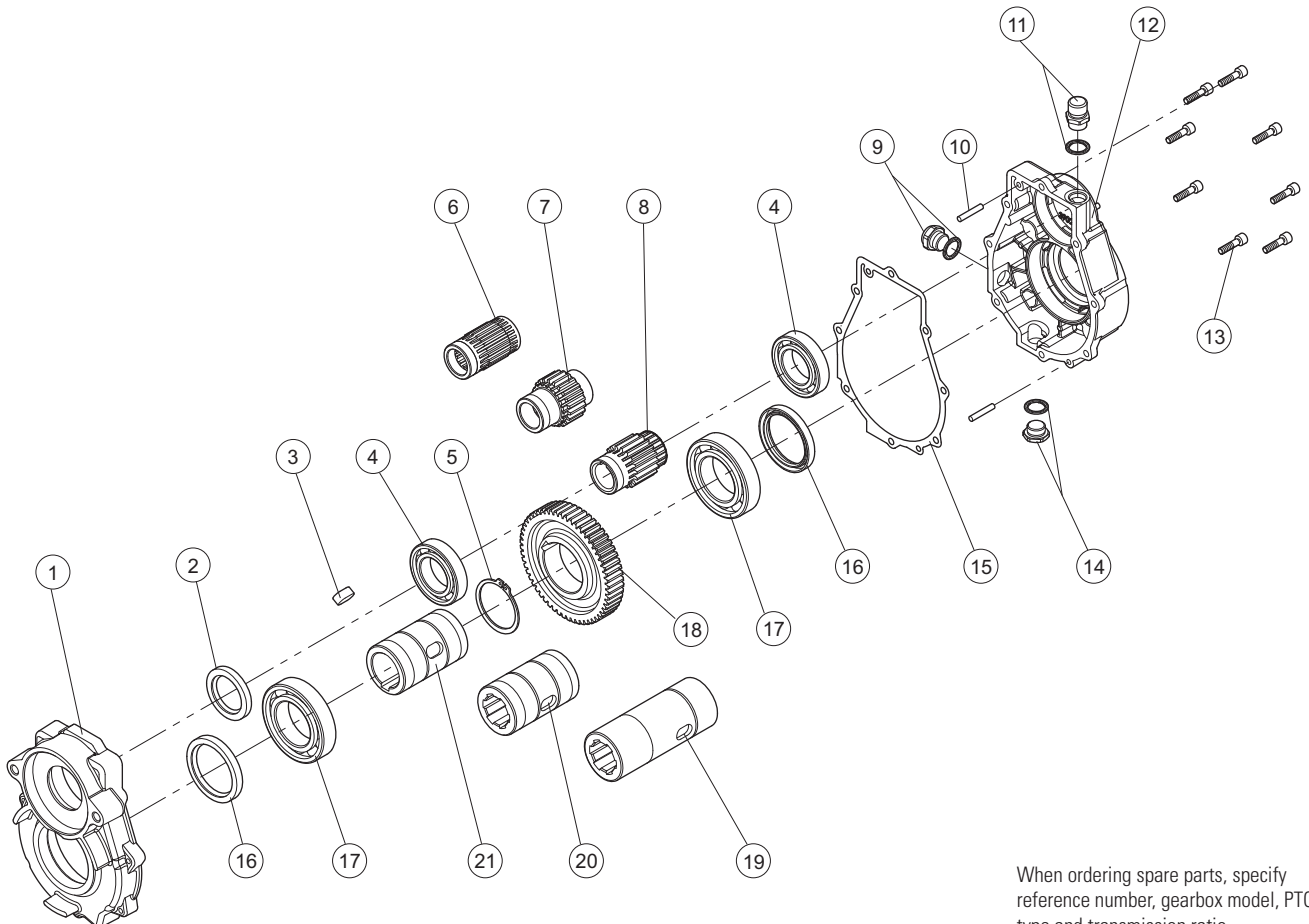


* Maximum torque on pump:
C1= maximum starting torque; C2= maximum torque for continuous duty.

Mounting positions	Oil liters [US gallon]
1	0.15 [0.04]
2	0.11 [0.03]
3	0.09 [0.02]

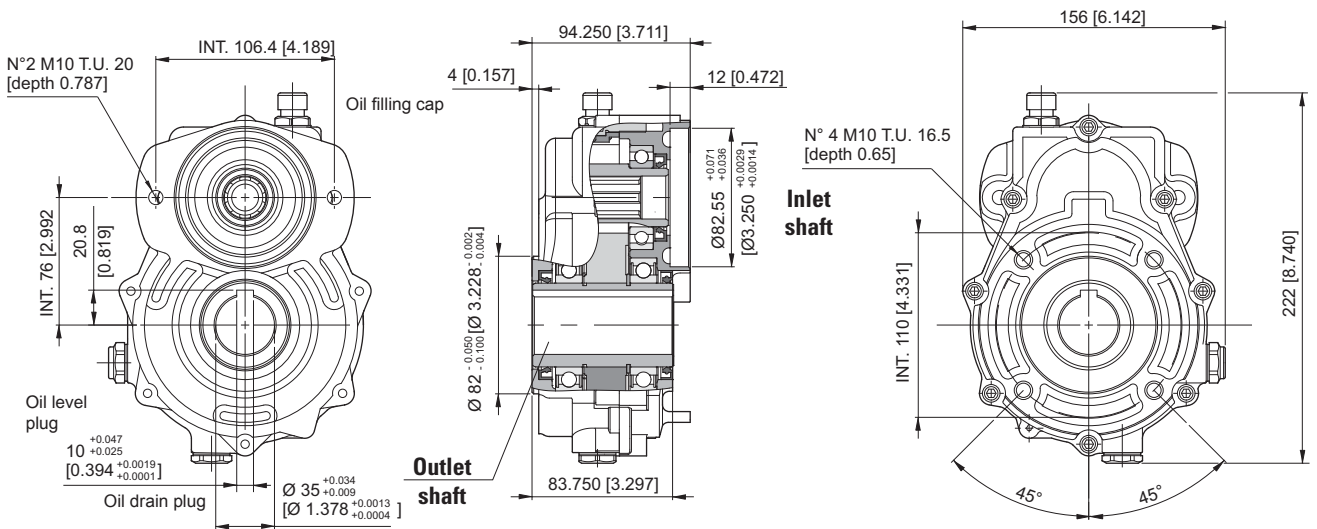
Output rpm	Input (transmission ratio)						
	0.66	0.50	0.40	0.33	0.29	0.26	
200	curve	1	2	3	4	5	6
	rpm	300	400	500	600	700	760

SPARE PARTS



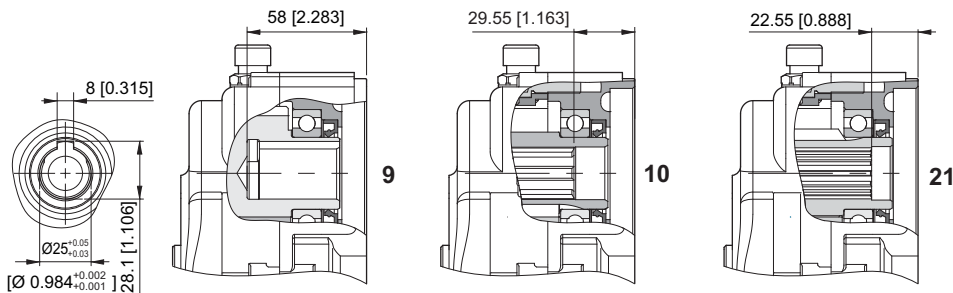
When ordering spare parts, specify reference number, gearbox model, PTO type and transmission ratio.

SPEED REDUCER GEARBOX SAE A

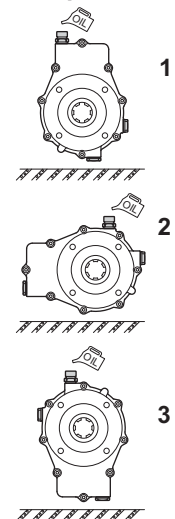


mm [inches]

Inlet shaft



Mounting positions



ORDERING CODE

RD42/SAE - * -1/ *** - ** - *

RD42/SAE = Speed reducers (cast iron body)

Output shaft
4 = Female Ø 35 mm

Transmission ratio
0,66 = 1.5 : 1
0,33 = 3.0 : 1
0,29 = 3.4 : 1

Mounting positions
1 / 2 / 3

Input shaft
9 = Female Ø 25 *
10 = Female SAE 6B
21 = Female Z14 DIN 5482 (25x22)

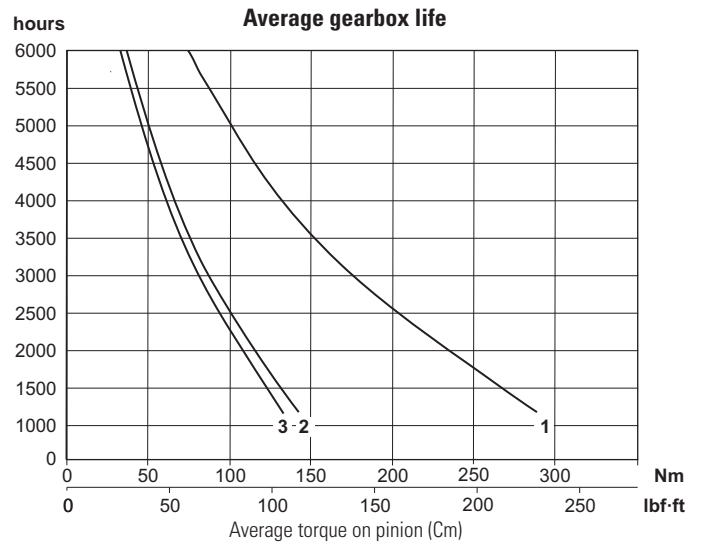
* Only for transmission ratio: 0.66 - 0.50 - 0.40 - 0.33

Coupling for pump to be required to our sales department.

TECHNICAL DATA

Transmission ratio	Maximum torque Nm [lbf-ft]		Weight kg [lb]
	200 rpm		
	C1*	C2*	
0.66	289 [213]	152 [112]	7,8 [17.2]
0.33	142 [105]	75 [55]	8,3 [18.3]
0.29	133 [98]	70 [52]	8,5 [18.7]

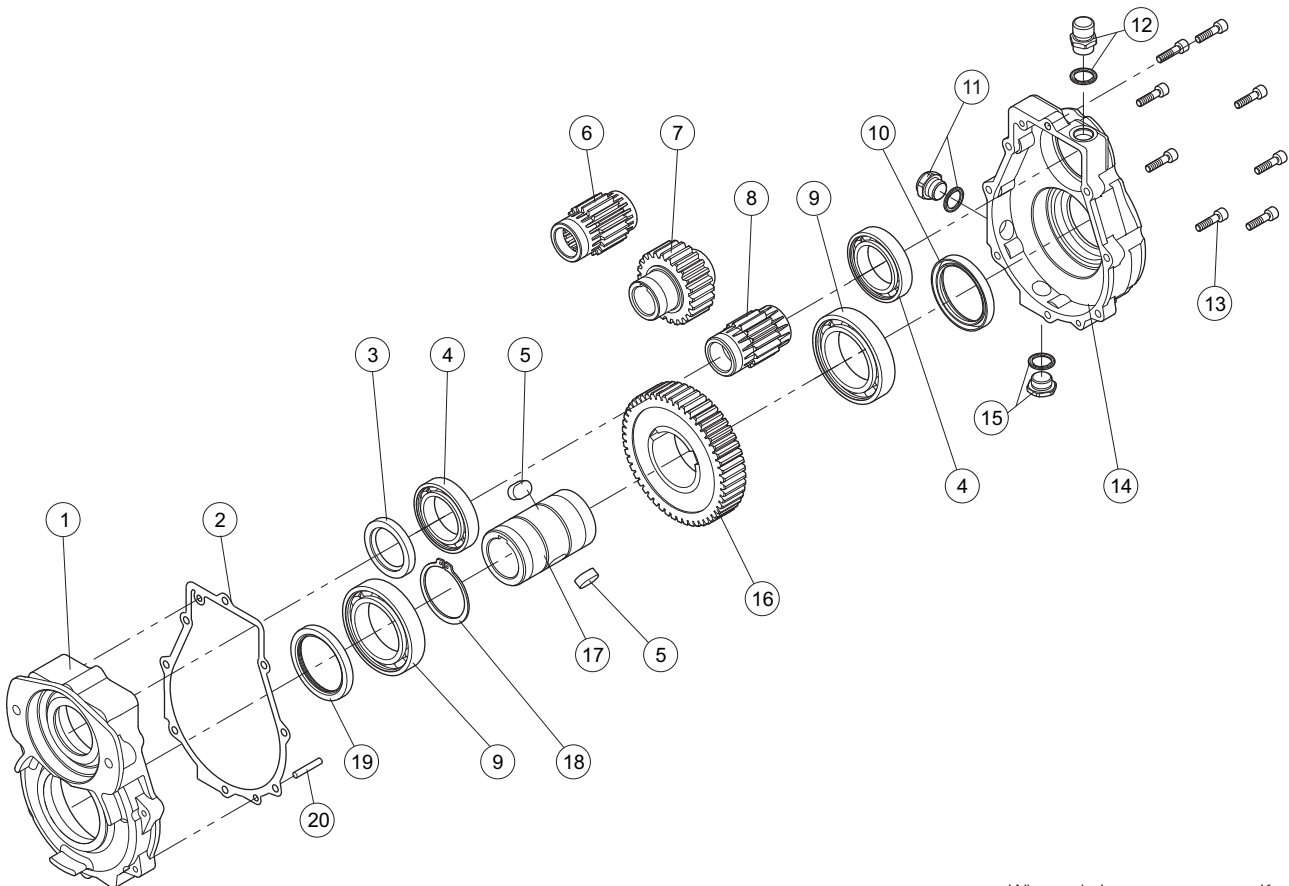
* Maximum torque on pump:
C1= maximum starting torque; C2= maximum torque for continuous duty.



Mounting positions	Oil liters [US gallon]
1	0.15 [0.04]
2	0.11 [0.03]
3	0.09 [0.02]

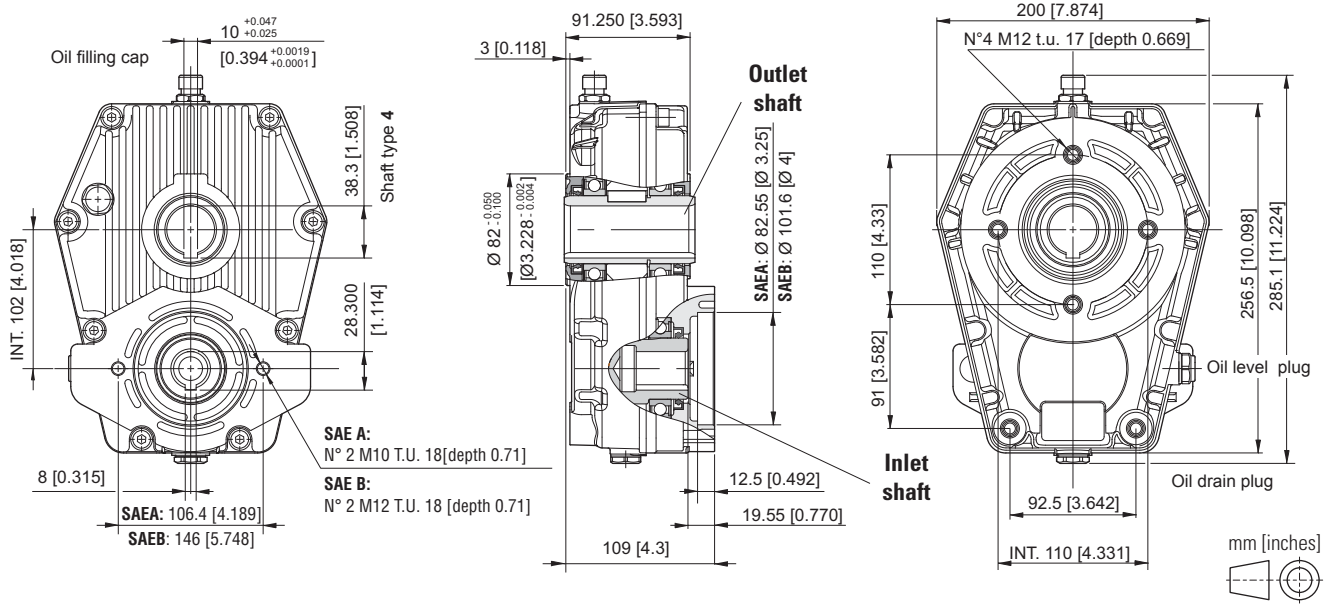
Output rpm	Input (transmission ratio)		
	0.66	0.33	0.29
200 curve	1	2	3
rpm	300	600	700

SPARE PARTS

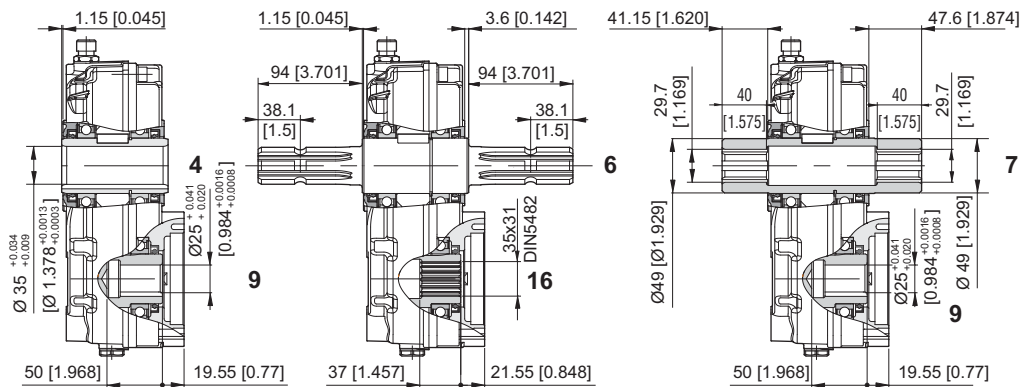


When ordering spare parts, specify reference number, gearbox model, PTO type and transmission ratio.

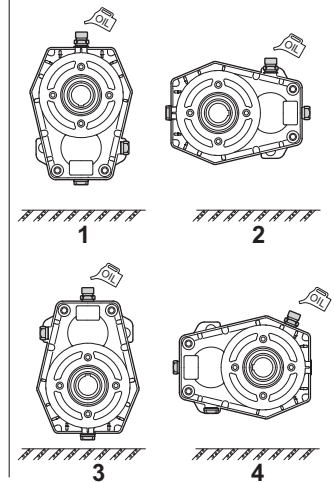
SPEED REDUCER GEARBOX SAE A/B



Shaft



Mounting positions



ORDERING CODE

RD52/SAE* - * -1/ *** - ** - *

RD52/SAE A = Speed reducers (aluminium body)
RD52/SAE B = Speed reducers (aluminium body)

Output shaft

4 = Female Ø 35 mm
6 = Male/Male 1" 3/8 DIN 9611
7 = Female/Female 1" 3/8 DIN 9611

Transmission ratio

0,66 = 1.5 : 1
0,50 = 2.0 : 1
0,38 = 2.6 : 1
0,33 = 3.0 : 1
0,29 = 3.4 : 1
0,26 = 3.8 : 1

Mounting positions

1 / 2 / 3 / 4

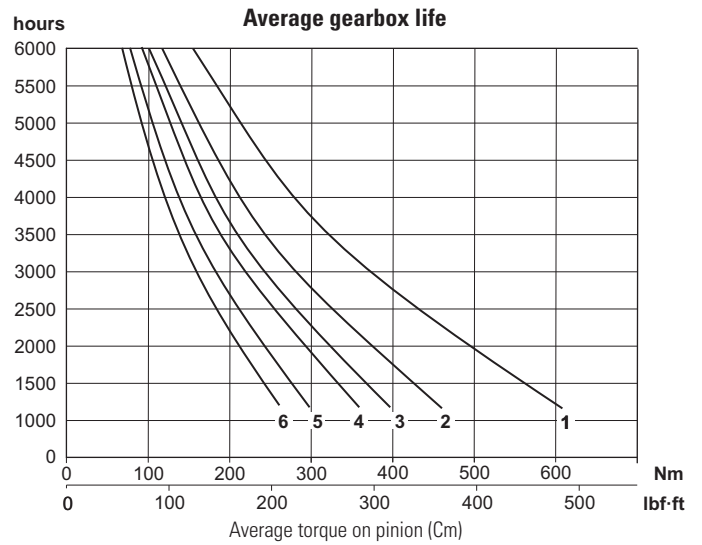
Input shaft

9 = Female Ø 25
16 = Female Z18 DIN 5482 (35x31)

Coupling for pump to be required to our sales department.

TECHNICAL DATA

Transmission ratio	Maximum torque Nm [lbf-ft]		Weight kg [lb]
	200 rpm		
	C1*	C2*	
0.66	608 [448]	320 [236]	9,5 [20.9]
0.50	460 [339]	242 [178]	7,9 [17.4]
0.38	397 [293]	209 [154]	8,3 [18.3]
0.33	359 [265]	189 [139]	8,2 [18.1]
0.29	298 [220]	157 [116]	8,8 [19.4]
0.26	261 [193]	137 [101]	7,9 [17.4]

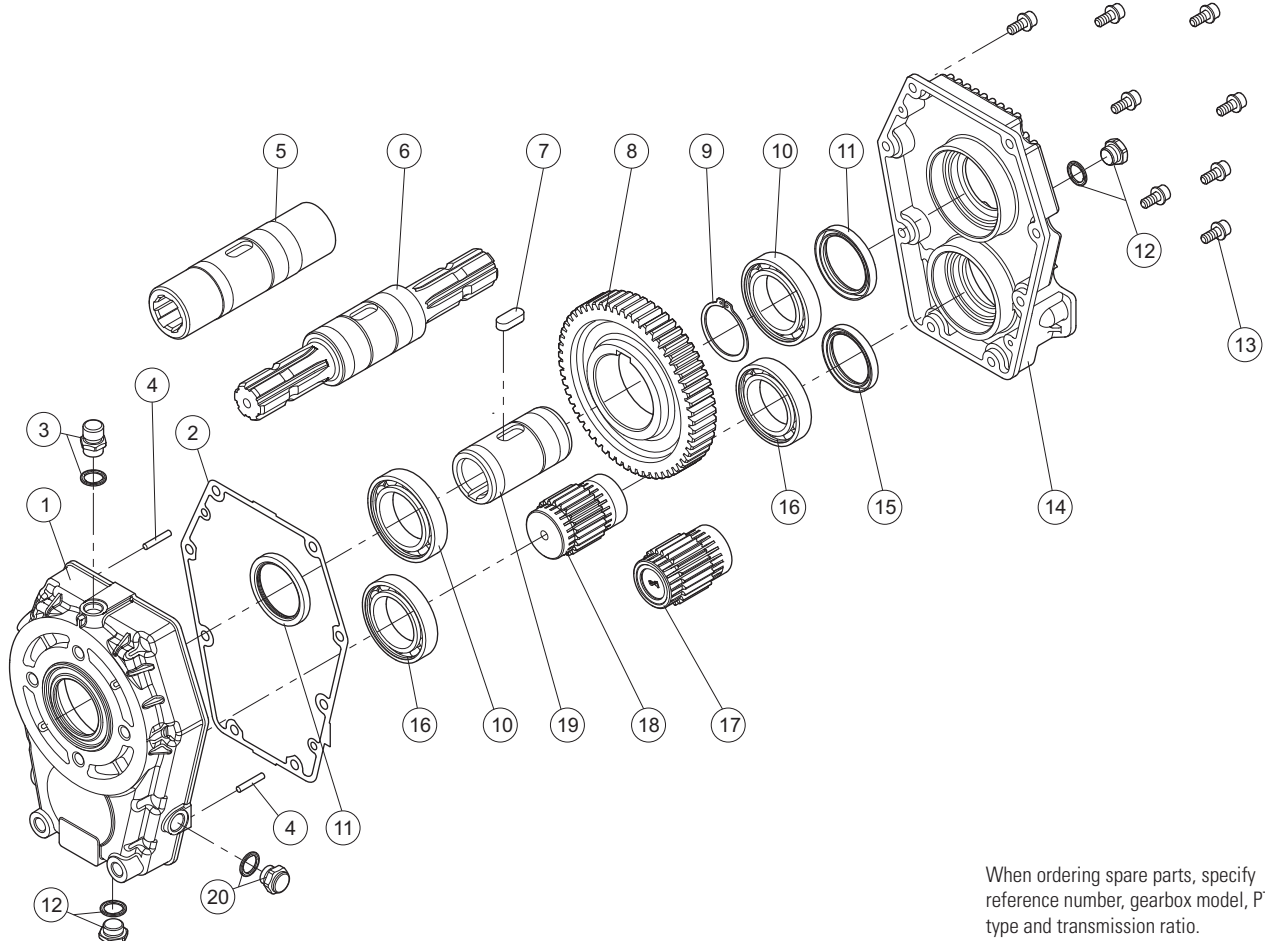


* Maximum torque on pump:
C1= maximum starting torque; C2= maximum torque for continuous duty.

Mounting positions	Oil liters [US gallon]
1	0.34 [0.09]
2	0.80 [0.21]
3	0.52 [0.14]
4	0.75 [0.20]

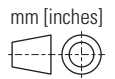
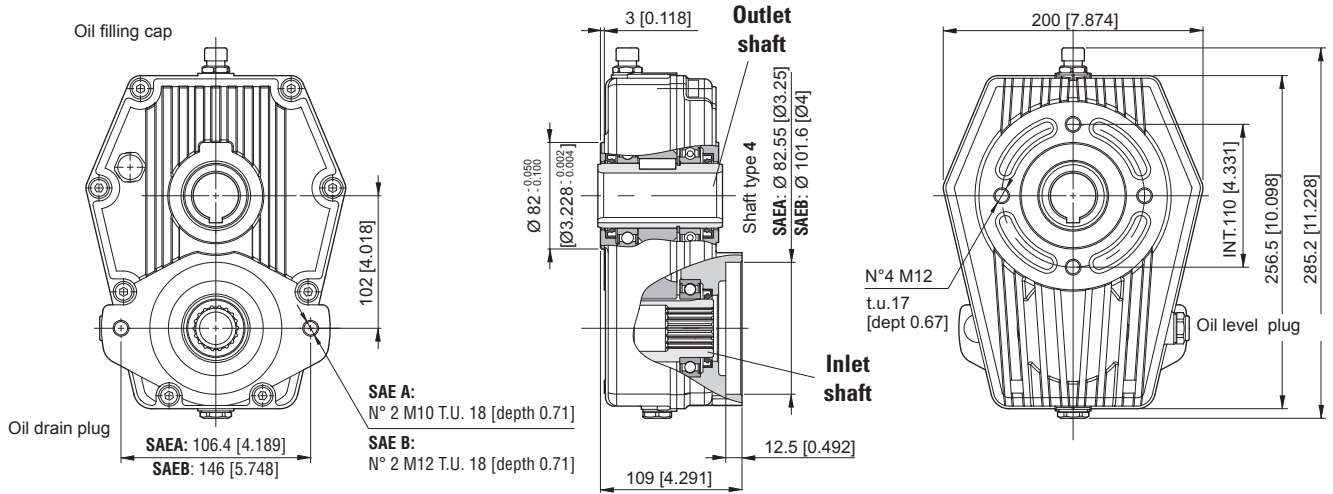
Output rpm	Input (transmission ratio)						
	0.66	0.50	0.38	0.33	0.29	0.26	
200	curve	1	2	3	4	5	6
	rpm	300	400	500	600	680	760

SPARE PARTS

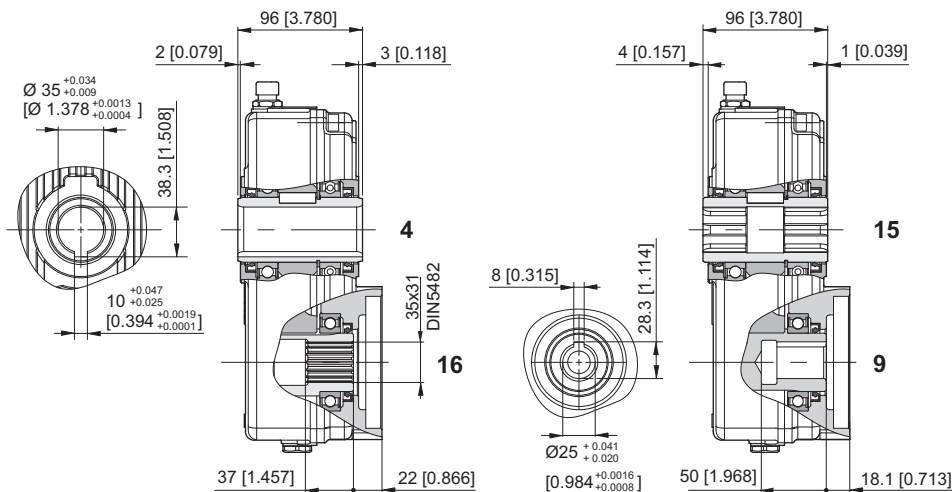


When ordering spare parts, specify reference number, gearbox model, PTO type and transmission ratio.

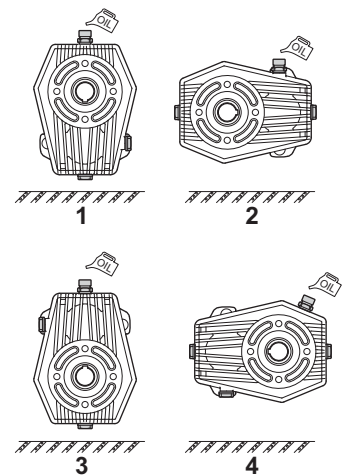
SPEED REDUCER GEARBOX SAE A/B



Shaft



Mounting positions



ORDERING CODE

RD62/SAE* - ** -1/ *** - ** - *

RD62/SAE A = Speed reducers (cast iron body)
RD62/SAE B = Speed reducers (cast iron body)

Output shaft
4 = Female $\varnothing 35$ mm
15 = Female 1" 3/8 DIN 9611 (short)

Mounting positions
1 / 2 / 3 / 4

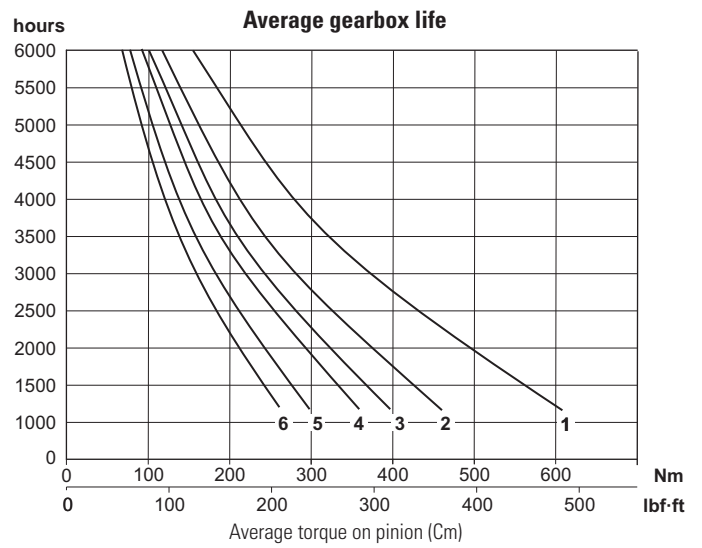
Input shaft
9 = Female $\varnothing 25$
16 = Female Z18 DIN 5482 (35x31)

Transmission ratio
0,66 = 1.5 : 1
0,50 = 2.0 : 1
0,38 = 2.6 : 1
0,33 = 3.0 : 1
0,29 = 3.4 : 1
0,26 = 3.8 : 1

Coupling for pump to be required to our sales department.

TECHNICAL DATA

Transmission ratio	Maximum torque Nm [lbf-ft]		Weight kg [lb]
	200 rpm		
	C1*	C2*	
0.66	608 [448]	320 [236]	9,5 [20.9]
0.50	460 [339]	242 [178]	7,9 [17.4]
0.38	397 [293]	209 [154]	8,3 [18.3]
0.33	359 [265]	189 [139]	8,2 [18.1]
0.29	298 [220]	157 [116]	8,8 [19.4]
0.26	261 [193]	137 [101]	7,9 [17.4]

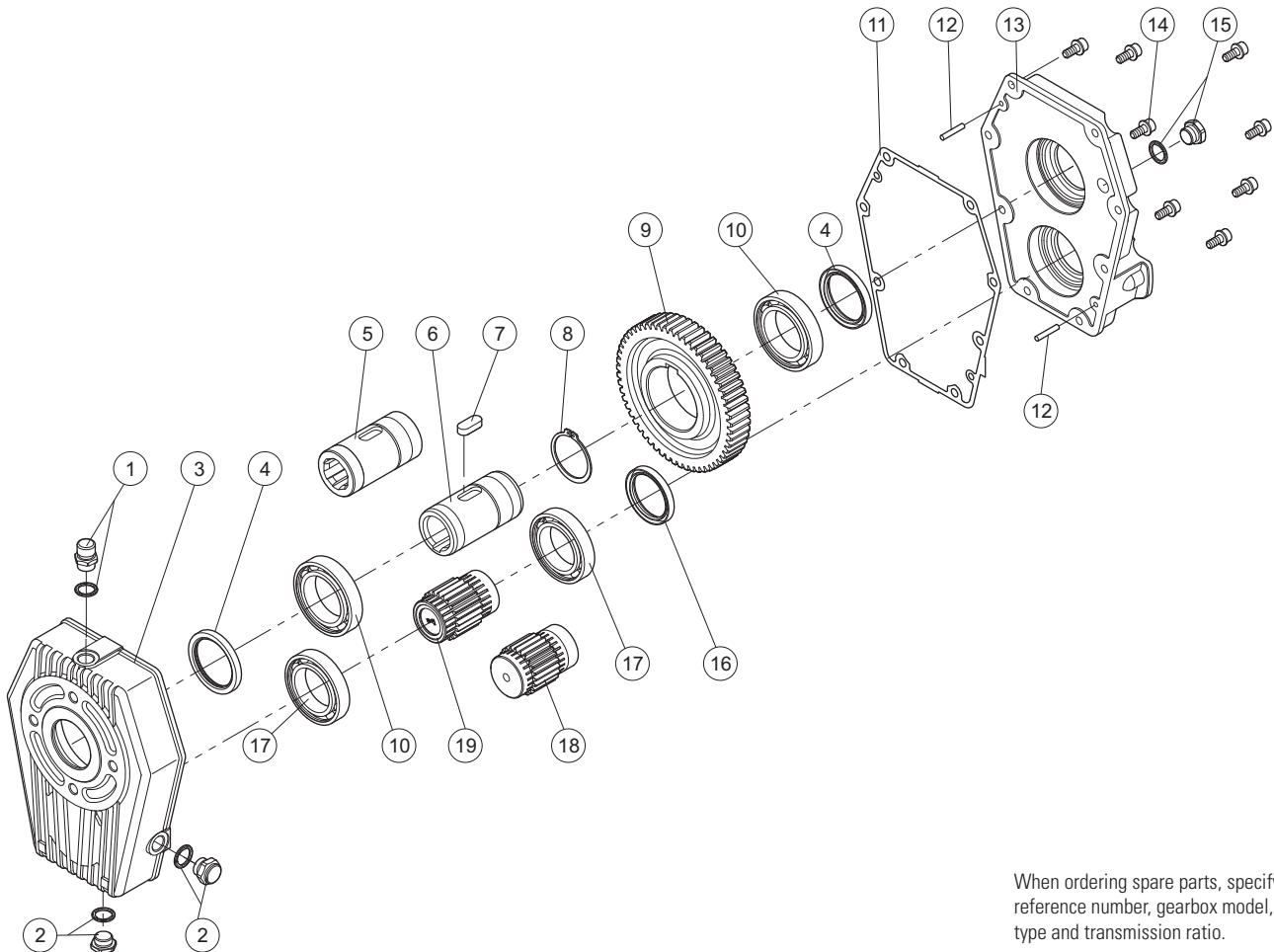


* Maximum torque on pump:
C1= maximum starting torque; C2= maximum torque for continuous duty.

Mounting positions	Oil liters [US gallon]
1	0.34 [0.09]
2	0.80 [0.21]
3	0.52 [0.14]
4	0.75 [0.20]

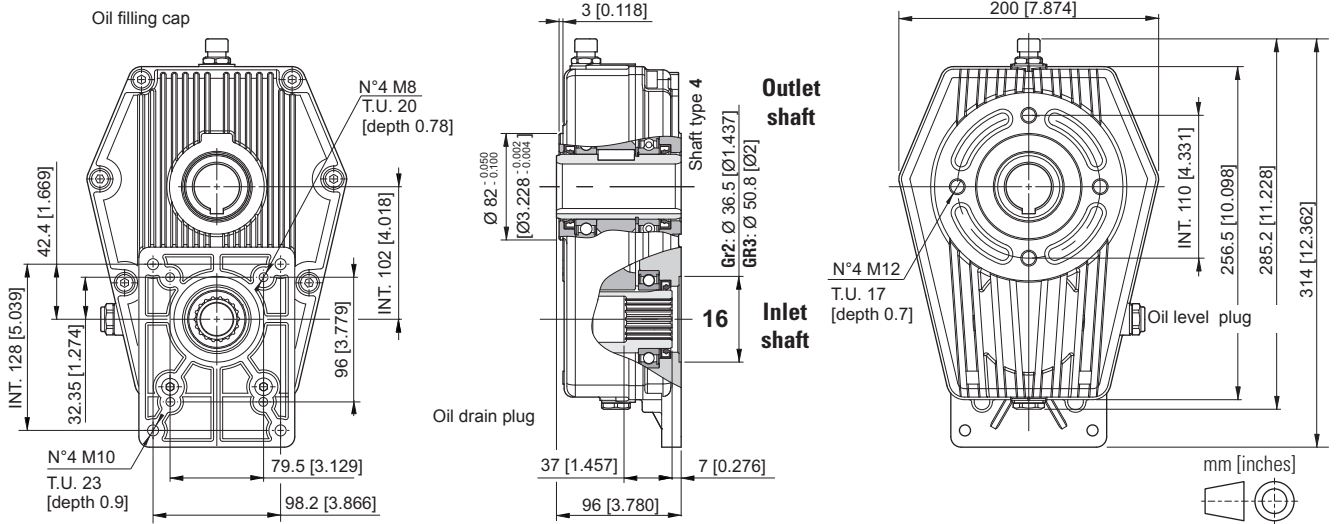
Output rpm		Input (transmission ratio)					
		0.66	0.50	0.38	0.33	0.29	0.26
200	curve	1	2	3	4	5	6
	rpm	300	400	500	600	680	760

SPARE PARTS

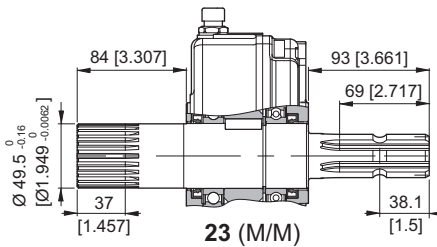
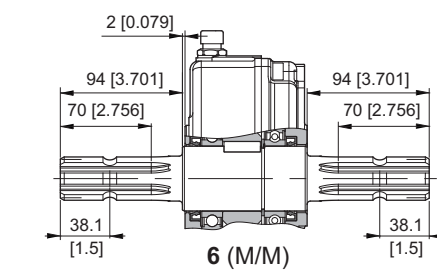
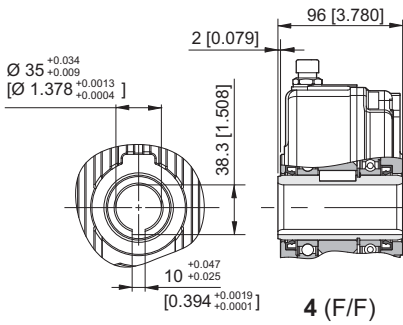


When ordering spare parts, specify reference number, gearbox model, PTO type and transmission ratio.

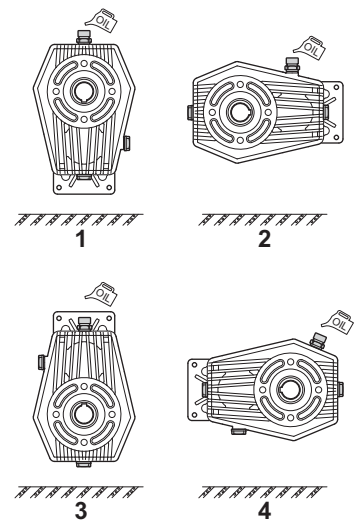
SPEED REDUCER GEARBOX WITH PTO FOR UNIFIED GR.2/3 PUMPS



Outlet shaft



Mounting positions



ORDERING CODE

RD62/B - ** -1/ *** - ** - *

RD62/B = Speed reducers (cast iron body)

Output shaft

4 = Female Ø 35 mm
6 = Male/Male 1" 3/8 DIN 9611
23 = Male 50x45 Z=24 DIN 5482
Male 1" 3/8 DIN 9611

Mounting positions
1 / 2 / 3 / 4

Input shaft

16 = Female Z18 DIN 5482

Transmission ratio

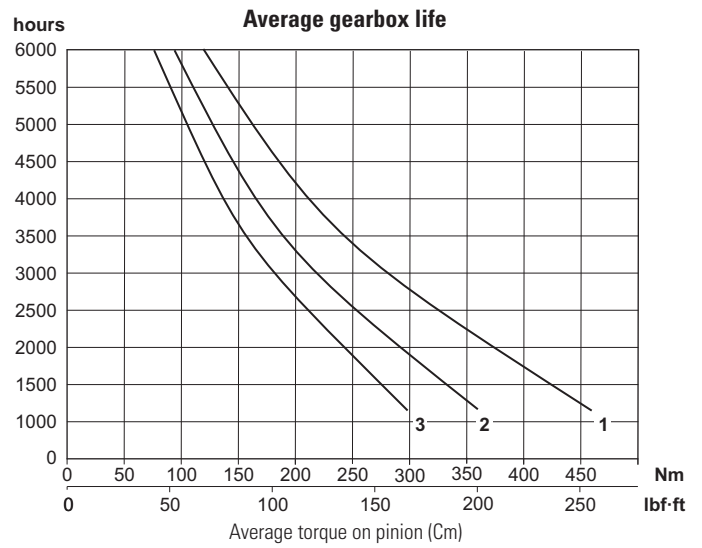
0,50 = 2.0 : 1
0,33 = 3.0 : 1
0,29 = 3.4 : 1

Coupling for pump to be required to our sales department.

TECHNICAL DATA

Transmission ratio	Maximum torque Nm [lbf-ft]		Weight kg [lb]
	200 rpm		
	C1*	C2*	
0.50	460 [339]	242 [178]	14 [30,9]
0.33	359 [265]	189 [139]	14 [30,9]
0.29	298 [220]	157 [116]	14 [30,9]

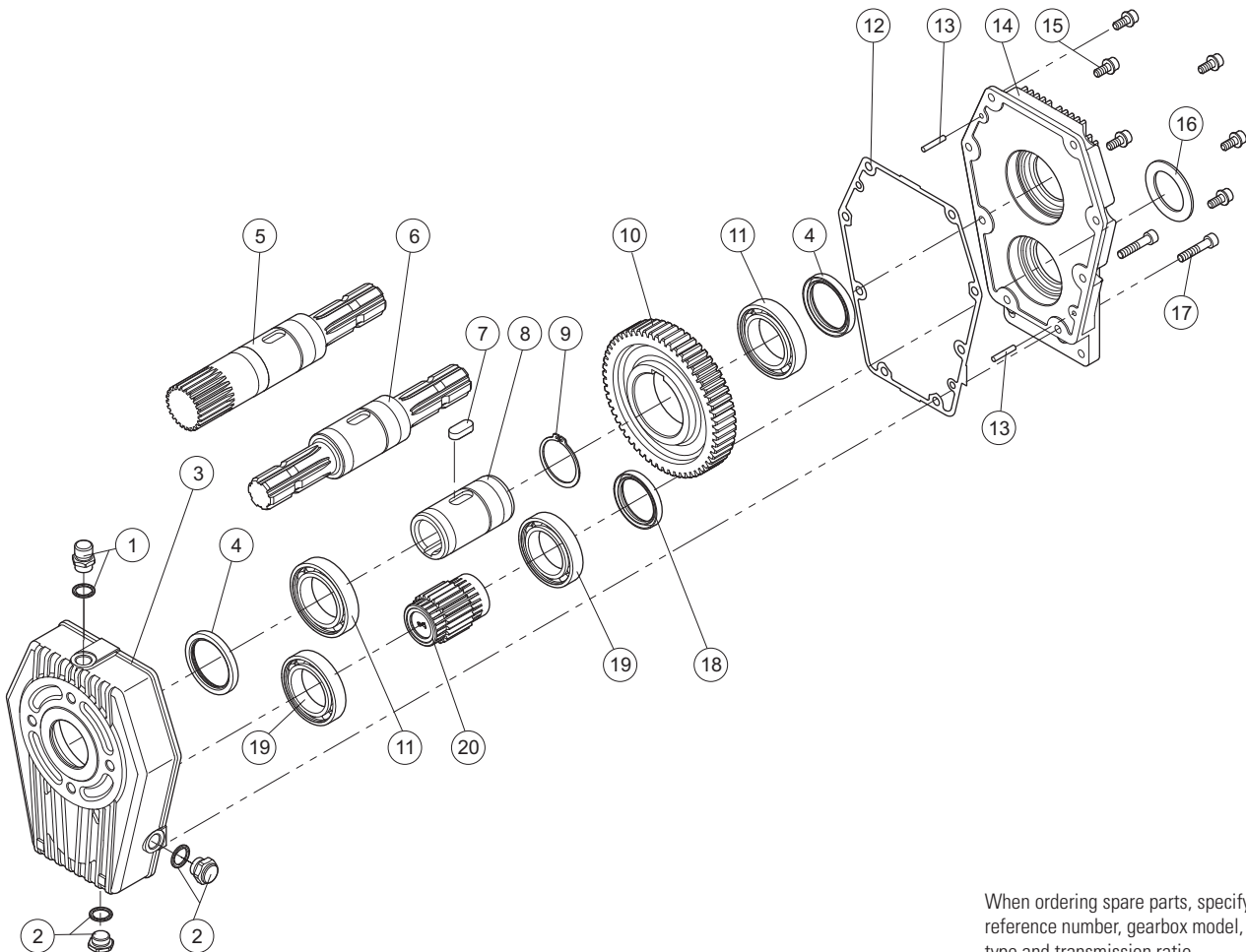
* Maximum torque on pump:
C1= maximum starting torque; C2= maximum torque for continuous duty.



Mounting positions	Oil liters [US gallon]
1	0.34 [0.09]
2	0.80 [0.21]
3	0.52 [0.14]
4	0.75 [0.20]

Output rpm	Input (transmission ratio)		
	0.50	0.33	0.29
200 curve	1	2	3
rpm	400	600	680

SPARE PARTS



When ordering spare parts, specify reference number, gearbox model, PTO type and transmission ratio.