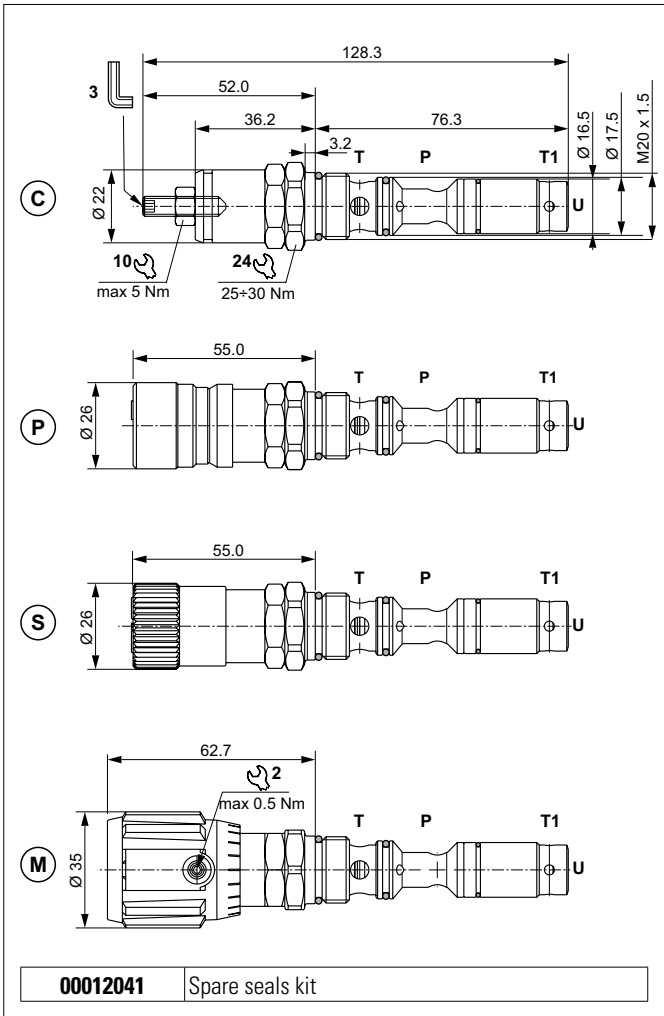


DIRECT ACTING PRESSURE RELIEF VALVES WITH LOGIC VALVE

1



This valve provides two combined functions in a single cartridge: a direct acting pressure relief valve and a logic check valve that allow automatic flow to tank from port U when there is no flow on P port.

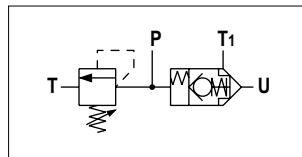
Pressure relief valve setting can be adjusted within the allowed pressure range, avoiding to increase the pressure over the maximum value. Springs into the check valve allow to assemble the valve in any preferred position and orientation.

Zinc plated steel housing, pressure relief valve's poppet made of tempered ground steel, check valve's ball made of tempered steel, steel logic valve poppet.

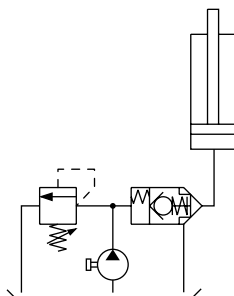
HYDRAULIC FEATURES

Max. working pressure	220 bar
Max. Flow	10 l/min
Setting range: Spring 0 (white) Spring 1 (green) Spring 2 (yellow)	max 50 bar max 110 bar max 220 bar
Logic valve opening pressure P → U	2,8 bar
One-way check valve U → T ₁	2,5 bar
Logic valve leakage (0 ÷ 20 drops/min)	0 ÷ 1 cm ³ /min
Hydraulic fluid	DIN 51524 Mineral oils
Fluid viscosity	10 ÷ 500 mm ² /s
Fluid temperature	-25°C ÷ 75°C
Ambient temperature	-25°C ÷ 60°C
Max. contamin. level class with filter	ISO 4406:1999 - class 19/17/14
Weight	0.17 kg
Tightening torque	25 ÷ 30 Nm
Cavity (M20 x 1,5)	CN044003 (See section 17)

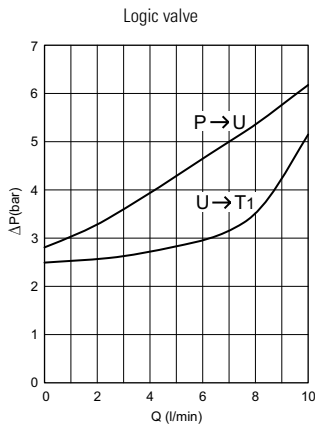
HYDRAULIC SYMBOL



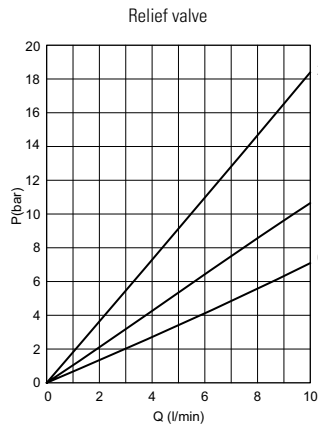
SERVICE EXAMPLE



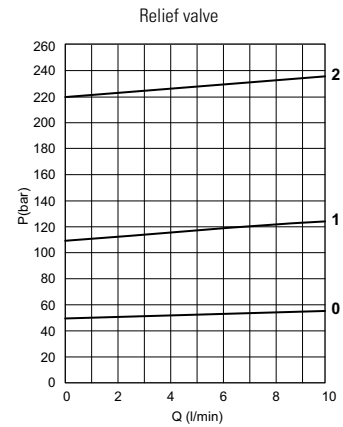
PRESSURE DROPS (P → U - U → T₁)



MIN. SETTING PRESSURE (P → T)



PRESSURE - FLOW (P → T)



0 = CPMK04*0 - 1 = CPMK04*1.. - 2 = CPMK04*2..
 Fluid used: mineral based oil with viscosity 46 mm²/s at 40°C.

ORDERING CODE

