



CETOP 3 SUBPLATES

BS301... / BS30*...	CAP. VII • 7
BS310/11... / BS312/13...	
BS314/15... / BS316/17...	CAP. VII • 8
BS320/21... / BSVMP10...	
BS3W...	CAP. VII • 9
BC325/27... / BC330/32...	
BC340...	CAP. VII • 10
BC341/*...	
BC350... / BC351...	
BC307... / BC3107...	CAP. VII • 12
BC308... / BC309...	
BC06XQ3... / BC06XQP3...	CAP. VII • 13
BC0625/27...	CAP. VII • 14
BC0630/32... / BC0640...	
BC0641/*...	CAP. VII • 15
BM3.**... / BM360...	CAP. VII • 16
BM350... / BM370...	CAP. VII • 17
BM352... / BM372...	CAP. VII • 18
CMP10...	CAP. VII • 30
XQ3...	CAP. VII • 20
XQP3...	CAP. VII • 22

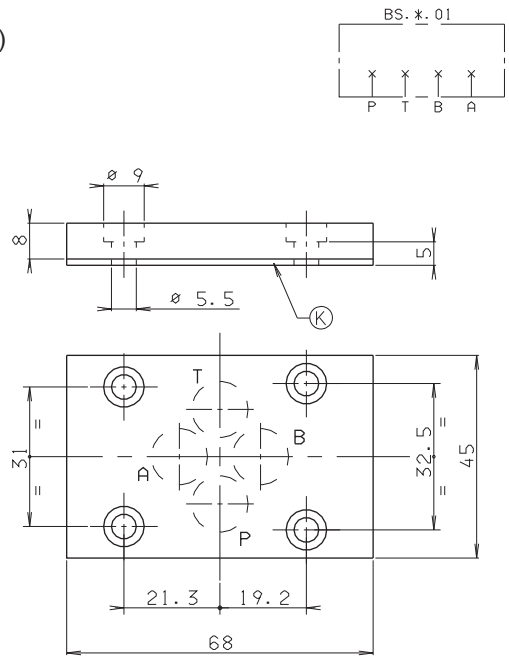
BS3... SINGLE STATION SUBPLATE

BS301...

- BS** Single subplate (blanking)
- 3** CETOP 3/NG6
- 01** P / T / A / B closed
- 00** No variant
- 1** Serial No.

Weight: 0,2 Kg
 Fixing screws M5x14 UNI 5931
 K = plate OR (Q25.95.0001)

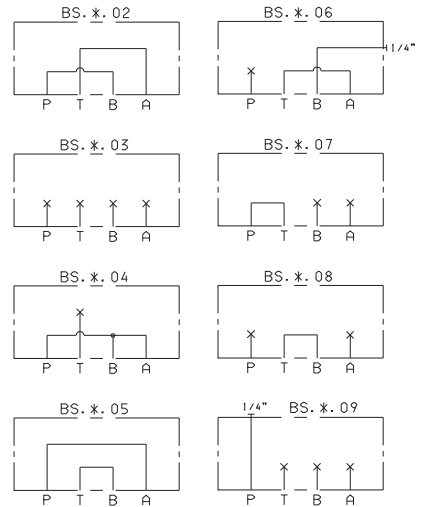
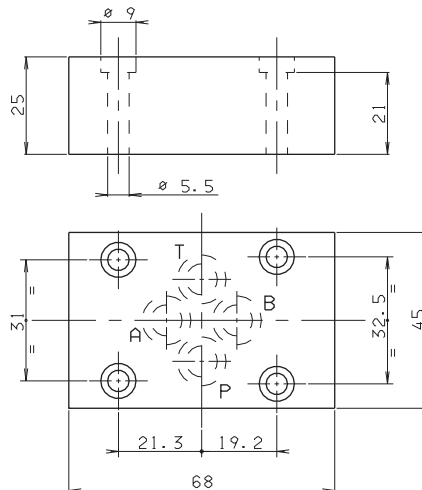
Use for pressures up to 200 bar.



BS3...**

- BS** Single subplate (blanking)
- 3** CETOP 3/NG6
- **** 02/03/04/05/06/07/08/09
- 00** No variant
- 1** Serial No.

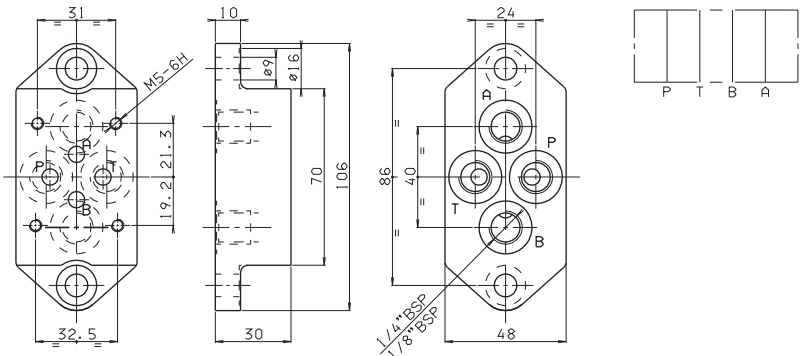
Weight: 0,5 Kg
 Fixing screws M5x30 UNI 5931



BS3... SINGLE STATION SUBPLATE

BS310/11... (REAR CONNECTORS)

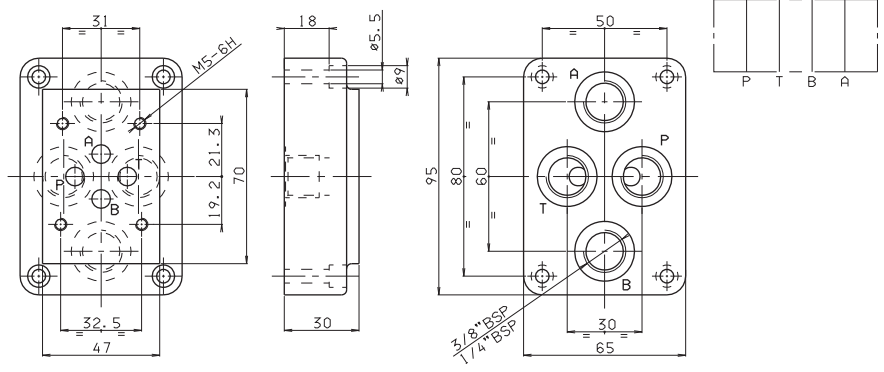
- BS** Single subplate
- 3** CETOP 3/NG6
- **** **10** = 1/8" BSP rear connectors
11 = 1/4" BSP rear connectors
- 00** No variant
- 1** Serial No.



Weight: 0,7 Kg - Fixing screws M8x20 UNI 5931

BS312/13 (REAR CONNECTORS)

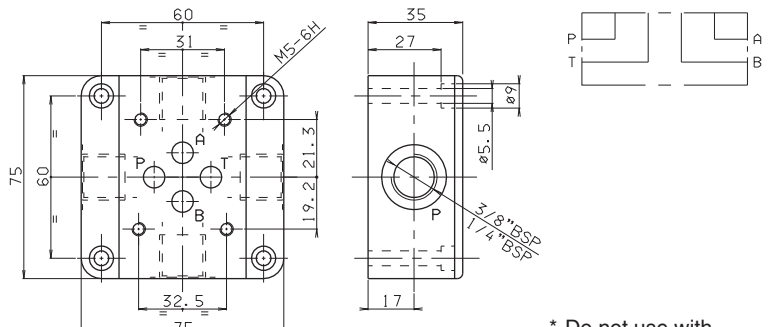
- BS** Single subplate
- 3** CETOP 3/NG6
- **** **12** = 3/8" BSP rear connectors
13 = 1/4" BSP rear connectors
- 00** No variant
- 1** Serial No.



Weight: 1 Kg - Fixing screws M5x25 UNI 5931

BS314/15 (SIDE CONNECTORS)

- BS** Single subplate
- 3** CETOP 3/NG6
- **** **14** = 3/8" BSP side connectors (*)
15 = 1/4" BSP side connectors (*)
- 00** No variant
- 1** Serial No.

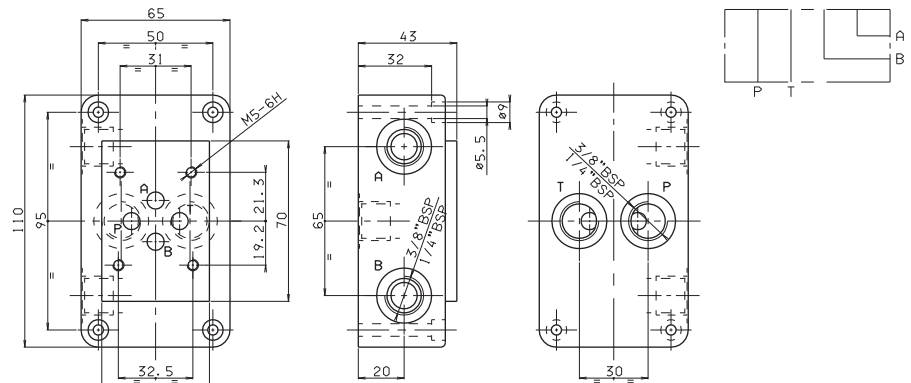


Weight: 1,2 Kg - Fixing screws M5x35 UNI 5931

* Do not use with XQP3C3-D---2

BS316/17 (CONNECTORS SIDE A AND B, REAR P AND T)

- BS** Single subplate
- 3** CETOP 3/NG6
- **** **16** = 3/8" BSP rear and side connectors
17 = 1/4" BSP rear and side connectors
- 00** No variant
- 1** Serial No.



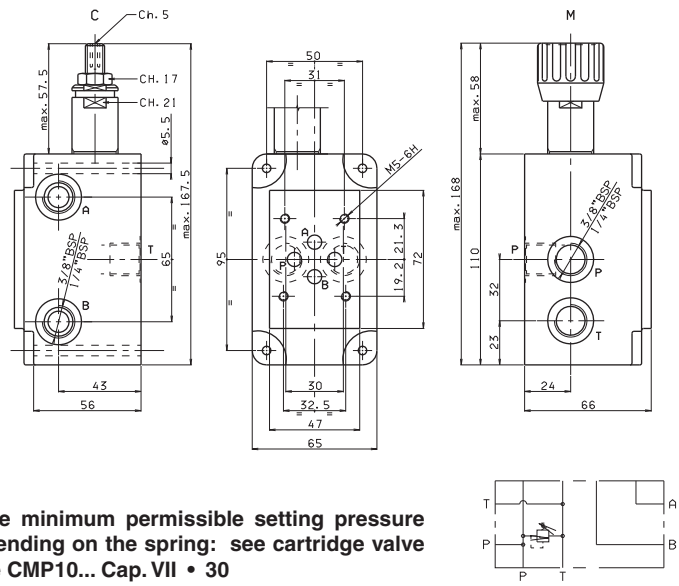
Weight: 1,8 Kg - Fixing screws M5x40 UNI 5931

7

BS3... SINGLE STATION SUBPLATE

BS320/21 (CONNECTORS SIDE A AND B, REAR P AND T)

- BS** Single subplate
- 3** CETOP 3/NG6
- **** 20 = 3/8" BSP rear and side connectors
21 = 1/4" BSP rear and side connectors
- *** **M** = Plastic knob
C = Grub screws
- *** Setting range
1 = max. 50 bar (**white spring**)
2 = max. 150 bar (**yellow spring**)
3 = max. 320 bar (**green spring**)
- 00** No variant
- 1** Serial No.

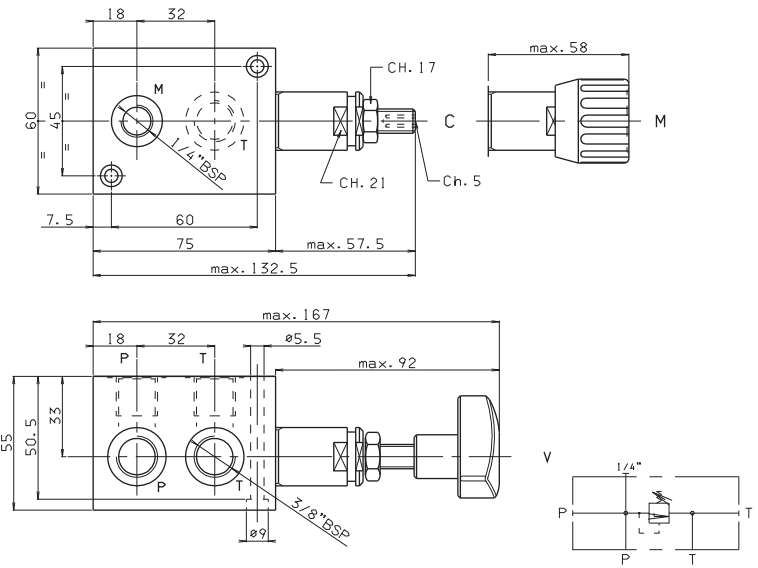


Weight: 2,9 Kg - Fixing screws M5x65 UNI 5931

• The minimum permissible setting pressure depending on the spring: see cartridge valve type CMP10... Cap. VII • 30

BSVMP10 SINGLE STATION SUBPLATE WITH MAX. PRESSURE VALVE FOR SURFACE MOUNTING (E.G. ON TAKE COVER)

- BS** Single subplate
- VMP** Max. pressure valve
- 10** 3/8" BSP connectors
- *** **M** = Plastic knob
C = Grub screw
V = Handwheel
- *** Setting range
1 = max. 50 bar (**white spring**)
2 = max. 150 bar (**yellow spring**)
3 = max. 320 bar (**green spring**)
- 00** No variant
- 1** Serial No.

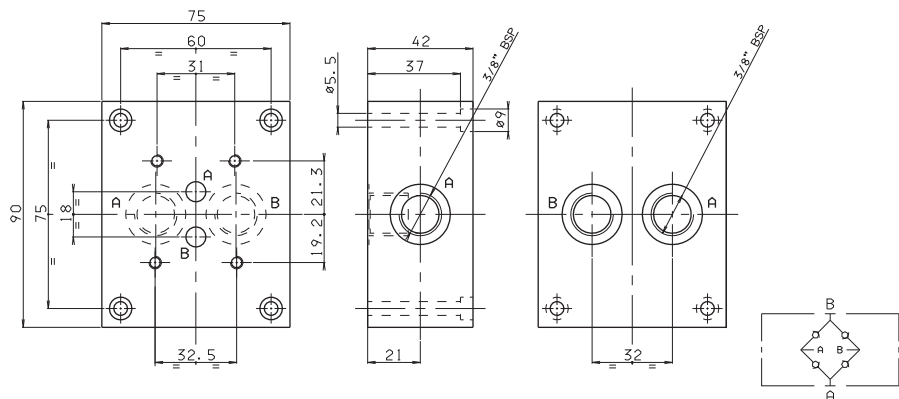


Weight: 1,6 Kg
Fixing screws M5x60 UNI 5931

• The minimum permissible setting pressure depending on the spring: see cartridge valve type CMP10... Cap. VII • 30

BS3W...

- BS** Single subplate
- 3** CETOP 3/NG6
- W** Wheatstone bridge
- 00** No variant
- 1** Serial No.

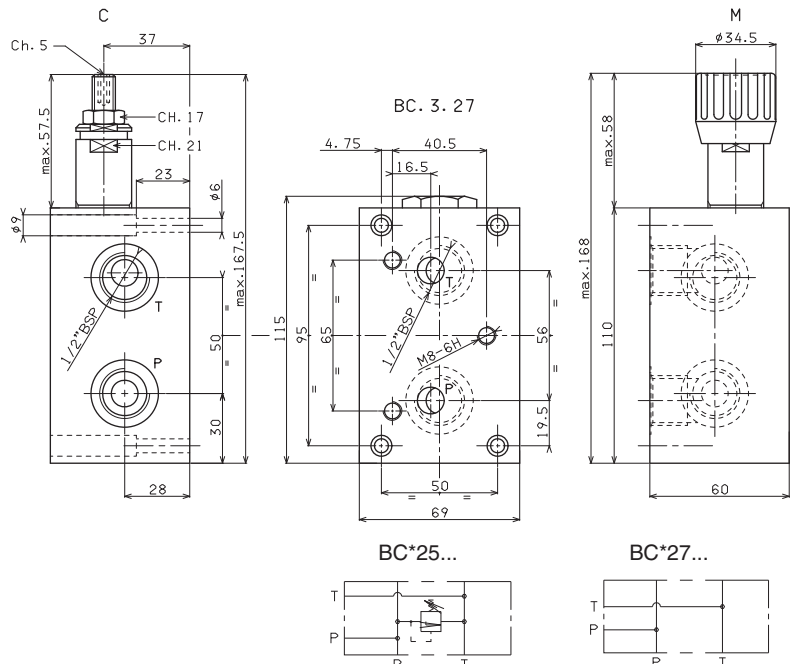


Weight: 1,8 Kg
Fixing screws M5x45 UNI 5931

7

BC325/27 P/T REAR AND SIDE CONNECTORS 1/2" BSP- 3 RODS

- BC** Module base
- 3** CETOP 3/NG6
- **** **25** = 1/2" BSP rear and side connectors with CMP
27 = 1/2" BSP rear and side connectors without CMP
- *** Adjustment (omit for 27 version)
M = Plastic knob
C = Grub screw
- *** Setting range (omit for 27 version)
1 = max. 50 bar (**white spring**)
2 = max. 150 bar (**yellow spring**)
3 = max. 320 bar (**green spring**)
- 00** No variant
- 1** Serial No.

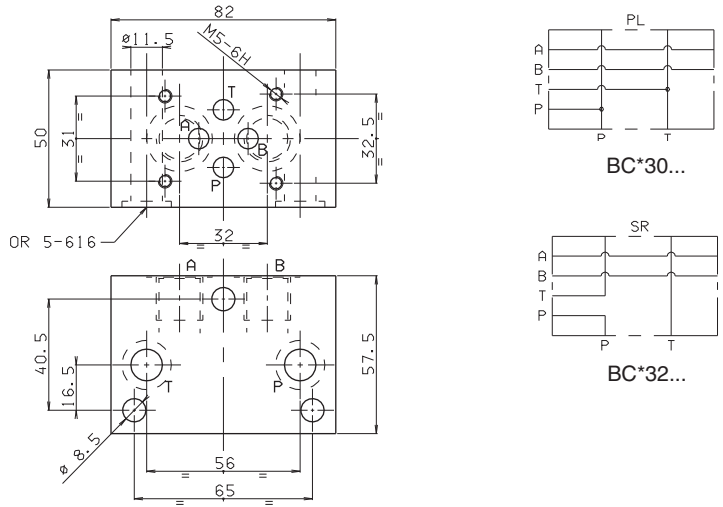


Weight BC.3.25: 2,7 Kg
 Weight BC.3.27: 2,6 Kg
 Fixing screws M5x30 UNI 5931

• The minimum permissible setting pressure depending on the spring:
 see cartridge valve type CMP10... Cap. VII • 30

BC330/32 - 3 RODS

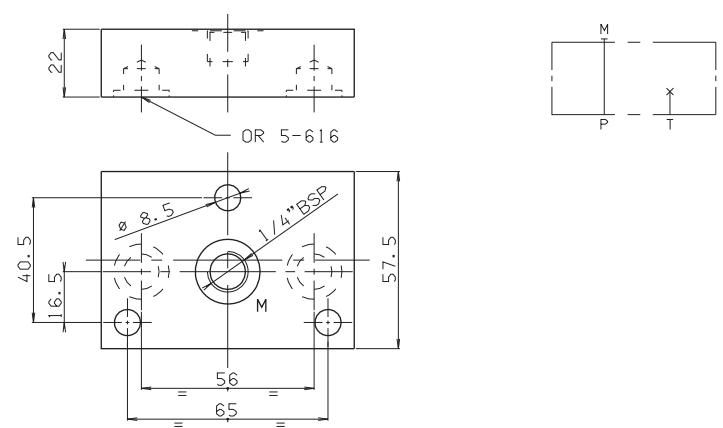
- BC** Module base
- 3** CETOP 3/NG6
- **** **30** = 3/8" BSP connectors in parallel
32 = 3/8" BSP connectors in series
- 00** No variant
- 1** Serial No.



Weight Kg. 1,4

BC340 - 3 RODS

- BC** Module base
- 3** CETOP 3/NG6
- 40** Blanking
- 00** No variant
- 1** Serial No.



Weight: 0,7 Kg

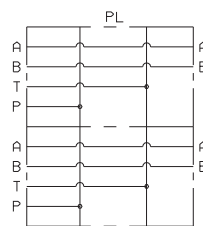
7

BC3... MODULAR COMPONENTS

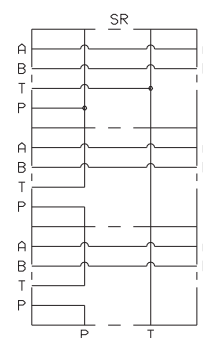
ASSEMBLED MODULAR COMPONENT BASES - 3 RODS

Rods code	L	Composition
BC341/2	M80200010	146 BC325/27 + 2 BC330/32 + BC340
BC341/3	M80200011	196 BC325/27 + 3 BC330/32 + BC340
BC341/4	M80200012	246 BC325/27 + 4 BC330/32 + BC340
BC341/5	M80200013	296 BC325/27 + 5 BC330/32 + BC340
BC341/6	M80200014	346 BC325/27 + 6 BC330/32 + BC340
BC341/7	M80200015	396 BC325/27 + 7 BC330/32 + BC340
BC341/8	M80200016	446 BC325/27 + 8 BC330/32 + BC340

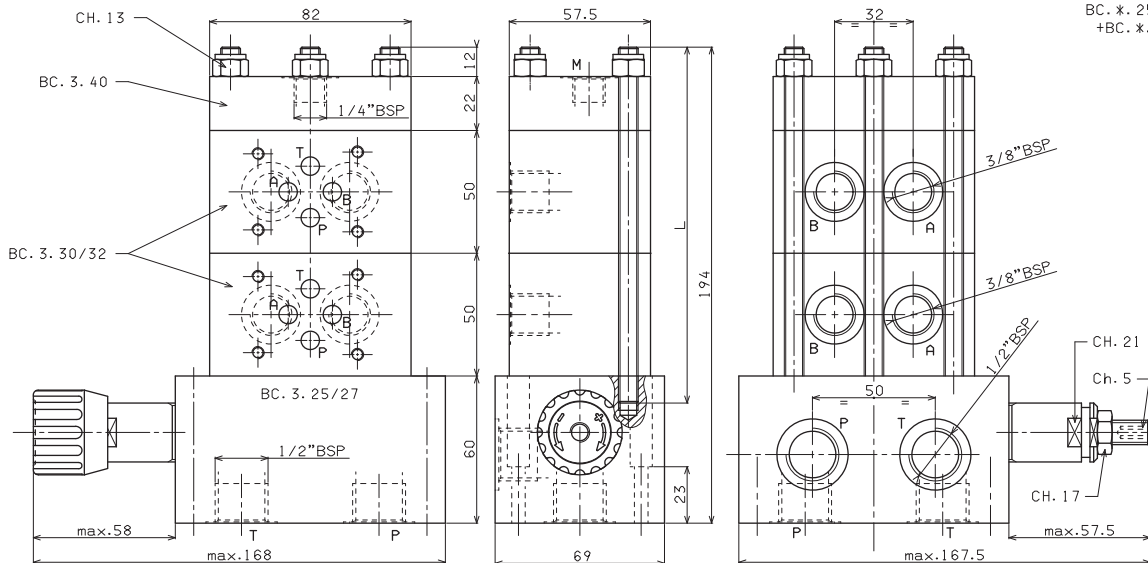
Nuts code Q26560514
Pieces 3



BC. *. 25/27
+BC. *. 30



BC. *. 25/27
+BC. *. 32

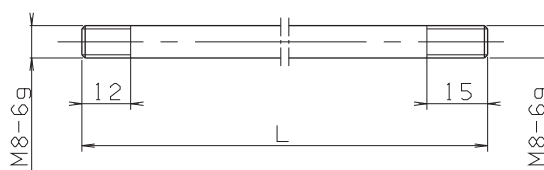


- For series connection the last block high up should be connected in parallel (BC330)
- Single components should be ordered separately
- The minimum permissible setting pressure depending on the spring: see cartridge valve type CMP10... Cap. VII • 30

BC341/* RODS FOR MODULAR ASSEMBLY

Rod code	Pieces	L	Composition
BC341/2001	3	146	for 2 solenoid valves
BC341/3001	3	196	for 3 solenoid valves
BC341/4001	3	246	for 4 solenoid valves
BC341/5001	3	296	for 5 solenoid valves
BC341/6001	3	346	for 6 solenoid valves
BC341/7001	3	396	for 7 solenoid valves
BC341/8001	3	446	for 8 solenoid valves

Tightening torque: 23 Nm (±2 Nm)

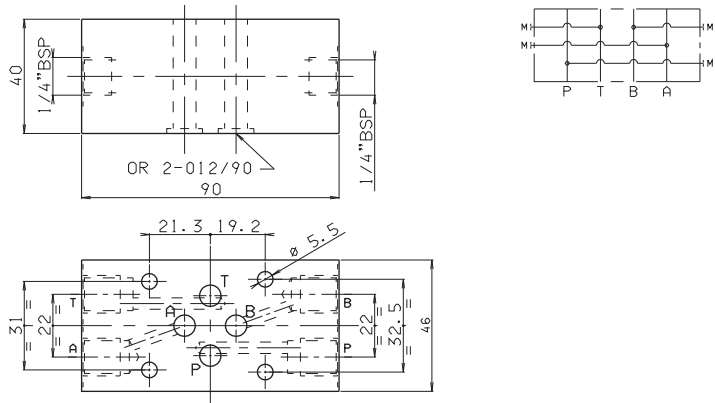


BC3... MODULAR COMPONENTS

BC350 INTERMEDIATE MODULE FOR PRESSURE GAUGE CONNECTION

- BC** Module base
- 3** CETOP 3/NG6
- 50** Intermediate module for pressure gauge connection at ports A/B/P/T
- 00** No variant
- 1** Serial No.

Weight: 1 Kg



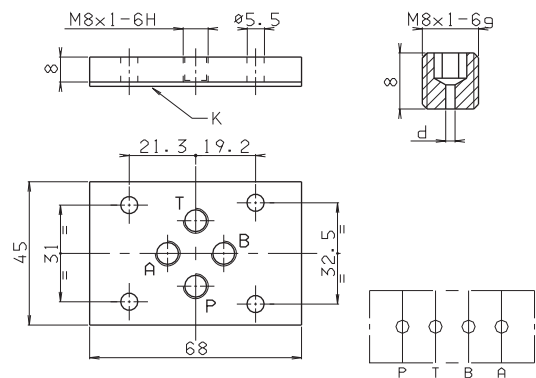
BC351 DOWEL BASE PLATE FOR SOLENOID VALVE

- BC** Module base
- 3** CETOP 3/NG6
- 51** Dowel base plate
- 00** No variant
- 1** Serial No.

Weight: 0,2 Kg

K = plate OR (Q25.95.0001)

CALIBRATED DIAPHRAGMS AVAILABLE	
d	M8x1x8
0.6	M89100007
0.7	M89100008
0.8	M89100009
0.9	M89100012
1	M89100010
1.2	M89100011
1.4	M89100038
1.5	M89100035
1.75	M89100042
2	M89100041
2.5	M89100036

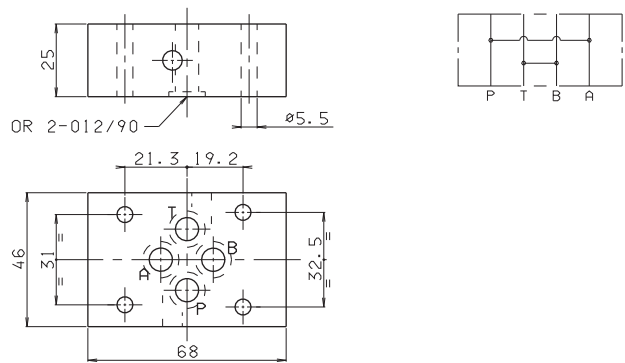


7

BC307 BASE PLATE FOR DOUBLE FLOW RATE P→A AND B→T

- BC** Module base
- 3** CETOP 3/NG6
- 07** bases plate for twin flow rate
- 00** No variant
- 1** Serial No.

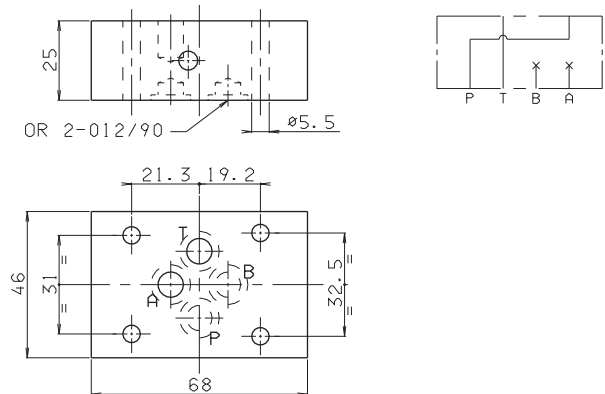
Weight: 0,5 Kg



BC3107 BASE PLATE FOR USING 4 WAY VALVE AS 2 WAY ONLY

- BC** Module base
- 3** CETOP 3/NG6
- 107** base for using 4 way valve as 2 way only
- 00** No variant
- 1** Serial No.

Weight: 0,5 Kg

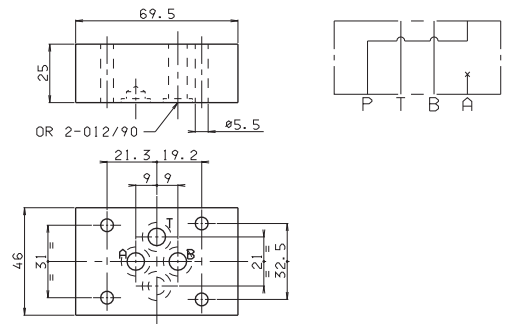


BC3... / BC06... MODULAR COMPONENTS

BC308 INTERMEDIATE BASE PLATE FOR XQ3... (P → A)

- BC** Module base
- 3** CETOP 3/NG6
- 08** Base plate for XQ3 (P→A)
- 00** No variant
- 1** Serial No.

Weight: 1,5 Kg

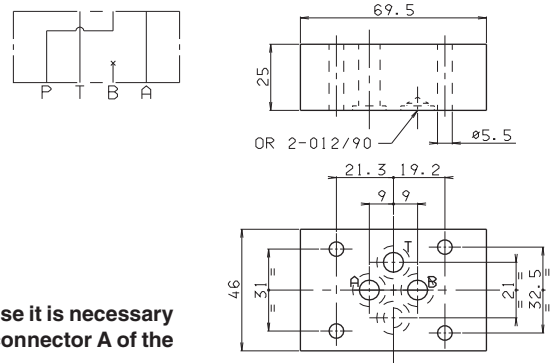


BC309 INTERMEDIATE BASE PLATE FOR XQ3... (B → P)

- BC** Module base
- 3** CETOP 3/NG6
- 09** Base plate for XQ3 (B→P)
- 00** No variant
- 1** Serial No.

Weight: 1,4 Kg

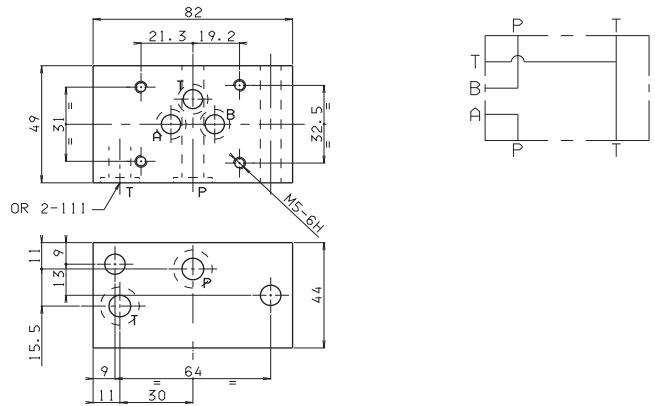
• To take advantage of this base it is necessary to operate with the pump at connector A of the multi station base plate



BC06XQ3 BASE PLATE FOR PROPORTIONAL VALVE TYPE XQ3...

- BC** Module base
- 06** CETOP 3/NG6
- XQ3** base plate XQ3
- 00** No variant
- 1** Serial No.

Weight: 1,4 Kg

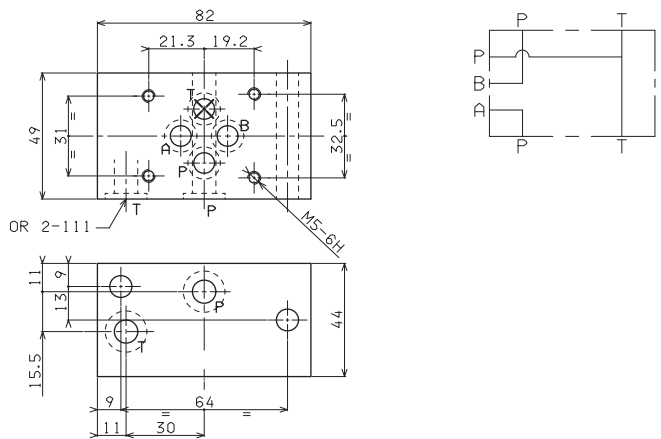


7

BC06XQP3 BASE PLATE FOR PROPORTIONAL REGULATOR TYPE XQP3...

- BC** Module base
- 06** CETOP 3/NG6
- XQP3** Base for XQP3 proportional regulator
- 00** No variant
- 1** Serial No

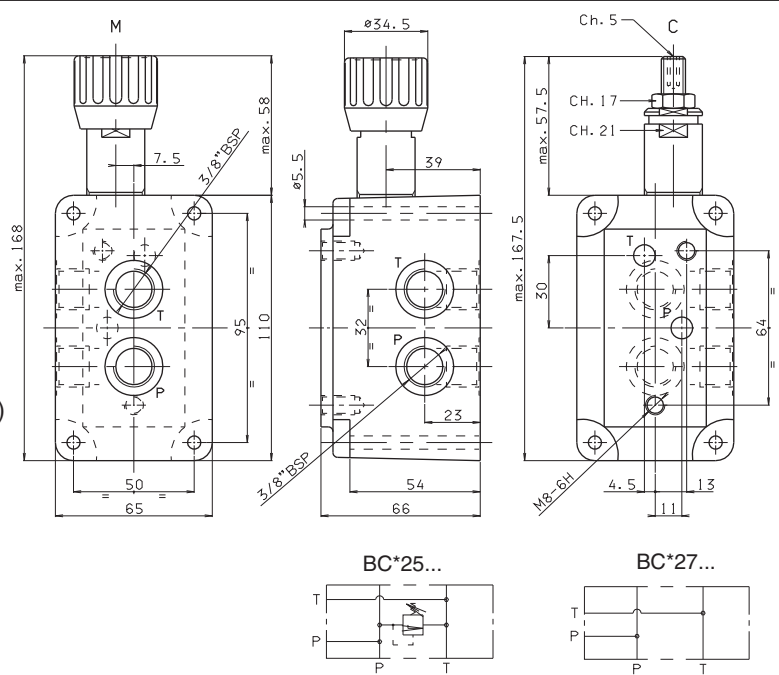
Weight: 1,4 Kg



BC.06... MODULAR COMPONENTS

BC0625/27 P AND T REAR AND SIDE CONNECTORS 3/8" BSP - 2 RODS

- BC** Module base
- 06** CETOP 3/NG6
- **** **25** = 3/8" BSP rear and side connectors with CMP
27 = 3/8" BSP rear and side connectors without CMP
- *** Adjustment (omit for BC0627 version)
M = Plastic knob
C = Grub screw
- *** Setting range (omit for BC0627 version)
1 = max. 50 bar (**white spring**)
2 = max. 150 bar (**yellow spring**)
3 = max. 320 bar (**green spring**)
- 00** No variant
- 1** Serial No.



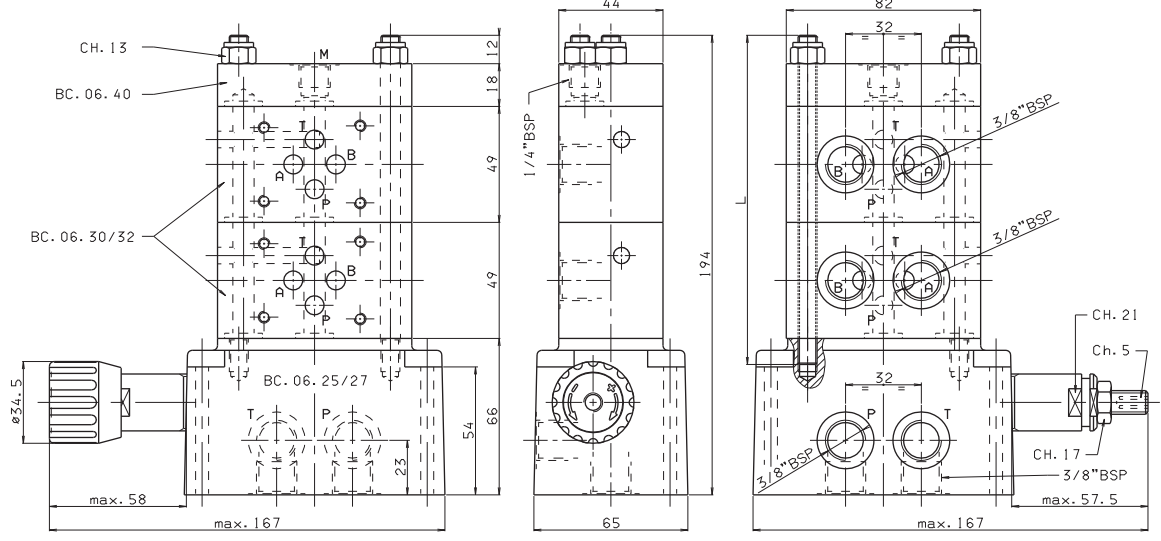
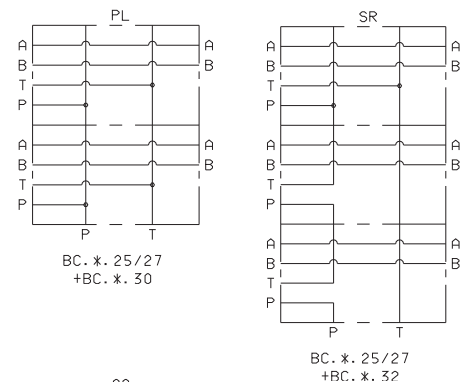
Weight BC325 : 3 Kg
 Weight BC327 : 2,8 Kg
 Fixing screws M5x65 UNI 5931

• The minimum permissible setting pressure depending on the spring:
 see cartridge valve type CMP10... Cap. VII • 30

ASSEMBLED MODULAR COMPONENT BASES - 2 RODS

Rods code	L	Composition
BC0641/2	M80200001	138 BC0625/27 + 2 BC0630/32 + BC0640
BC0641/3	M80200002	187 BC0625/27 + 3 BC0630/32 + BC0640
BC0641/4	M80200003	236 BC0625/27 + 4 BC0630/32 + BC0640
BC0641/5	M80200004	285 BC0625/27 + 5 BC0630/32 + BC0640
BC0641/6	M80200005	334 BC0625/27 + 6 BC0630/32 + BC0640
BC0641/7	M80200006	382 BC0625/27 + 7 BC0630/32 + BC0640
BC0641/8	M80200007	430 BC0625/27 + 8 BC0630/32 + BC0640

Nuts code Q26560514
Pieces 2



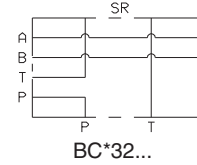
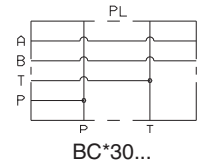
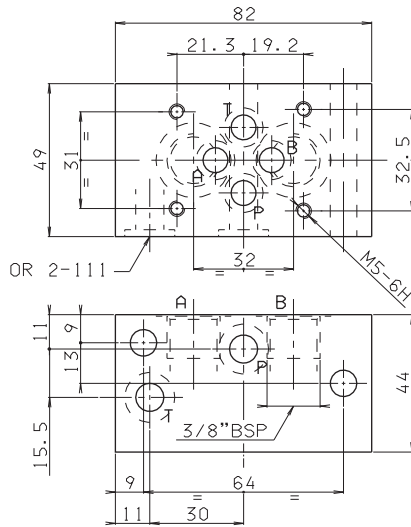
- For series connection the last block high up should be connected in parallel (BC0630)
- Single components should be ordered separately
- The minimum permissible setting range depending on the spring: see cartridge valve type CMP.10... Cap. VII • 30

7

BC0630/32 - 2 RODS

- BC** Module base
- 06** CETOP 3/NG6
- **** **30** = 3/8" BSP connectors in parallel
32 = 3/8" BSP connectors in series
- 00** No variant
- 1** Serial No.

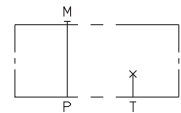
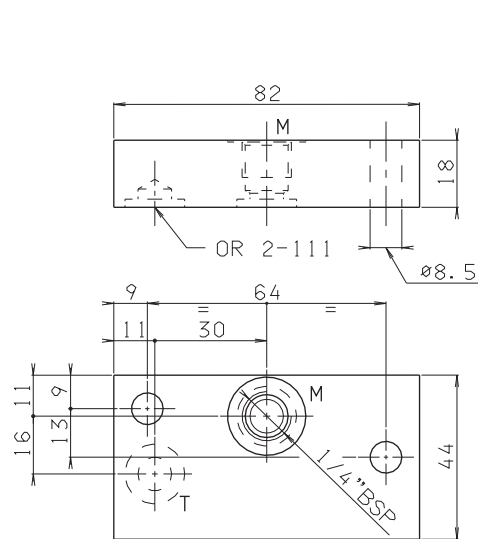
Weight: 1,1 Kg



BC0640 - 2 RODS

- BC** Module base
- 06** CETOP 3/NG6 - 2 rods
- 40** Blanking
- 00** No variant
- 1** Serial No.

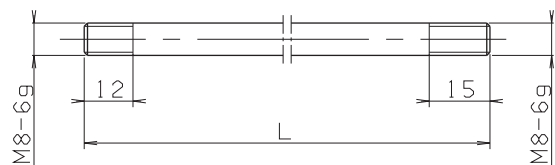
Weight: 0,4 Kg



BC0641/* RODS FOR MODULAR ASSEMBLY

Rod code	Pieces	L	Composition
BC0641/2001	2	138	for 2 solenoid valves
BC0641/3001	2	187	for 3 solenoid valves
BC0641/4001	2	236	for 4 solenoid valves
BC0641/5001	2	285	for 5 solenoid valves
BC0641/6001	2	334	for 6 solenoid valves
BC0641/7001	2	382	for 7 solenoid valves
BC0641/8001	2	430	for 8 solenoid valves

Tightening torque: 23 Nm (±2 Nm)



BM3... MULTI STATION SUBPLATE

BM3...

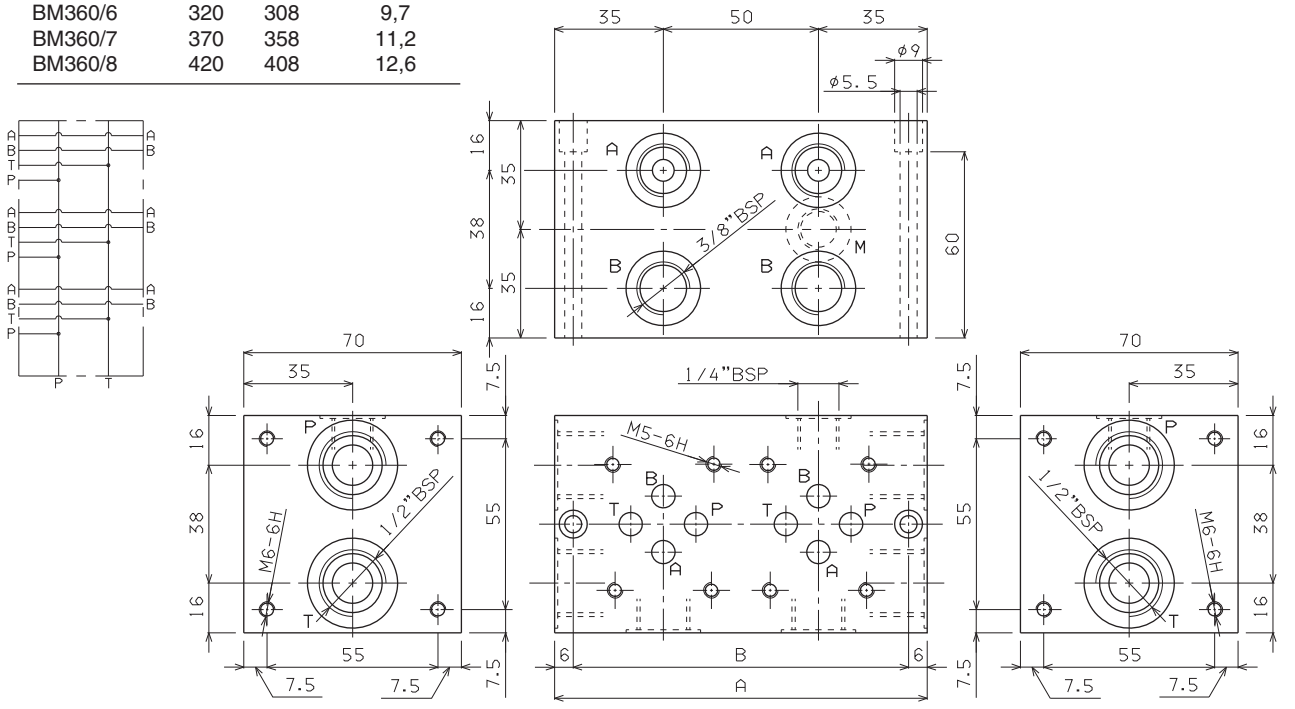
- BM** Multi station subplate (standard versions are supplied in cast iron material)
- 3** CETOP 3/NG6
- ****
 - 50** = Connected in parallel with pressure relief valve and rear connectors
 - 70** = Connected in parallel with pressure relief valve and side connectors
 - 52** = Connected in series with pressure relief valve and rear connectors
 - 72** = Connected in series with pressure relief valve and side connectors
 - 60** = Connected in parallel without pressure relief valve and side connectors
- *** No. of valve seats
2 / 3 / 4 / 5 / 6 / 7 / 8
- *** Type of adjustment (omit for BM360 version)
M = Plastic knob
C = Grub screw
- *** Setting range (omit for BM360 version)
1 = max. 50 bar (**white spring**)
2 = max. 150 bar (**yellow spring**)
3 = max. 320 bar (**green spring**)
- **** **00** = No variant
AL = in aluminium material versions (recommended pressure max. 230 bar)
- 1** Serial No.

• The minimum permissible setting pressure depending on the spring:
see cartridge valve type CMP10... Cap. VII • 30

7

BM360 CONNECTED IN PARALLEL WITHOUT PRESSURE RELIEF VALVE

Type	A	B	Weight(Kg)
BM360/2	120	108	3,6
BM360/3	170	158	5,1
BM360/4	220	208	6,7
BM360/5	270	258	8,2
BM360/6	320	308	9,7
BM360/7	370	358	11,2
BM360/8	420	408	12,6



Fixing screws M5x70 UNI 5931

BM3... MULTI STATION SUBPLATE

BM350 CONNECTED IN PARALLEL WITH PRESSURE RELIEF VALVE

Technical drawing of the BM350 subplate. It includes an electrical schematic on the left showing a parallel connection of 8 stations. The main drawing shows the top and side views with dimensions in millimeters. Key features include a CMP10 pressure relief valve, 3/8" BSP ports, and M5-6H and M8-6H screws. Dimensions include a total length of 52mm, a width of 32.5mm, and a maximum height of 153mm.

Type	A	B	Weight(Kg)
BM350/2	141	126	4,6
BM350/3	191	176	6,1
BM350/4	241	226	7,6
BM350/5	291	276	9,1
BM350/6	341	326	10,6
BM350/7	391	376	12,1
BM350/8	441	426	13,6

Fixing screws M6x55 UNI 5931

BM370 CONNECTED IN PARALLEL WITH PRESSURE RELIEF VALVE

Technical drawing of the BM370 subplate. It includes an electrical schematic on the left showing a parallel connection of 8 stations. The main drawing shows the top and side views with dimensions in millimeters. Key features include a CMP10 pressure relief valve, 3/8" BSP ports, and M5-6H and M6-6H screws. Dimensions include a total length of 160mm, a width of 35mm, and a maximum height of 128mm.

Type	A	B	Weight(Kg)
BM370/2	160	148	4,9
BM370/3	210	198	6,4
BM370/4	260	248	7,9
BM370/5	310	298	9,4
BM370/6	360	348	10,9
BM370/7	410	398	12,4
BM370/8	460	448	13,9

Fixing screws M5x70 UNI 5931

7

BM3... MULTI STATION SUBPLATE

BM352 CONNECTED IN SERIES WITH PRESSURE RELIEF VALVE

Technical drawing of the BM352 subplate. It includes a top view showing a grid of ports labeled P, T, and M, with dimensions for overall size (max. 152.5 x max. 57.5) and individual port spacing. A side view shows the subplate's profile with a height of 46 and a 3/8" BSP connection. A detail view shows a port with a 1/4" BSP connection and an M5-6H screw. Another detail view shows a port with an M8-6H screw and a 1/2" BSP connection. A pressure relief valve (CMP 10) is also indicated.

Type	A	B	Weight(Kg)
BM352/2	141	126	4,6
BM352/3	191	176	6,3
BM352/4	241	226	7,6
BM352/5	291	276	9,2
BM352/6	341	326	10,7
BM352/7	391	376	12,2
BM352/8	441	426	13,7

Fixing screws M6x55 UNI 5931

7

BM372 CONNECTED IN SERIES WITH PRESSURE RELIEF VALVE

Technical drawing of the BM372 subplate. It includes a top view showing a grid of ports labeled P, T, and M, with dimensions for overall size (max. 127.5 x max. 57.5) and individual port spacing. A side view shows the subplate's profile with a height of 70 and a 3/8" BSP connection. A detail view shows a port with a 1/4" BSP connection and an M5-6H screw. Another detail view shows a port with an M6-6H screw and a 1/2" BSP connection. A pressure relief valve (CMP 10) is also indicated.

Type	A	B	Weight(Kg)
BM372/2	160	148	4,9
BM372/3	210	198	6,4
BM372/4	260	248	7,9
BM372/5	310	298	9,4
BM372/6	360	348	10,9
BM372/7	410	398	12,4
BM372/8	460	448	13,9

Fixing screws M5x70 UNI 5931