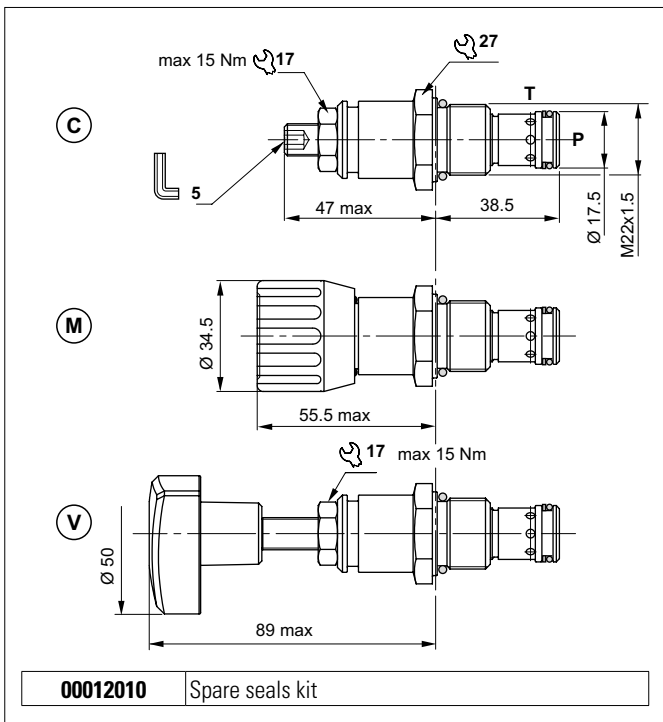


PILOT OPERATED PRESSURE RELIEF VALVES

1

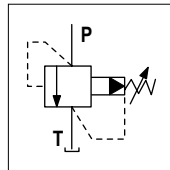


The pilot-operated relief valve limits the pressure in the hydraulic circuit. Slight leakage is tolerated for this type of valve. It raises the safety level by making it impossible for the plant operators to set a higher pressure rating, than that specified in the catalogue. It has a pack spring with a mechanical stop. It has a galvanised steel body. The tapered pilot poppet and cylindrical main plunger are made from tempered and ground steel.

HYDRAULIC FEATURES

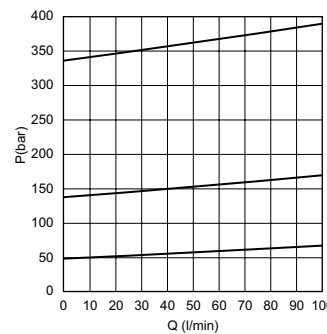
| | |
|--|--------------------------------|
| Max. working pressure | 350 bar |
| Setting range: | |
| Spring 1 (white) | max 50 bar |
| Spring 2 (yellow) | max 140 bar |
| Spring 3 (green) | max 350 bar |
| Max. Flow | 100 l/min |
| Hydraulic fluid | DIN 51524 Mineral oils |
| Fluid viscosity | 10 ÷ 500 mm ² /s |
| Fluid temperature | -25°C ÷ 75°C |
| Ambient temperature | -25°C ÷ 60°C |
| Max. contamin. level class with filter | ISO 4406:1999 - class 19/17/14 |
| Weight | 0.18 kg |
| Tightening torque | 30 ÷ 40 Nm |
| Cavity (M22x1.5) | CN047003 (See section 17) |

HYDRAULIC SYMBOL

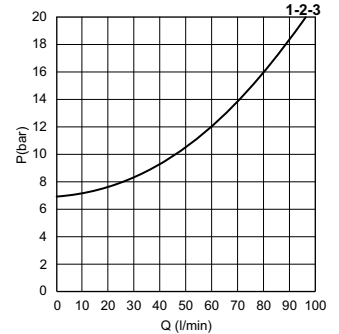


The minimum permissible setting pressure depending on the spring: see curves below

PRESSURE-FLOW RATE



MIN.SETTING PRESSURE



1 = CMP30.1.. - 2 = CMP30.2.. - 3 = CMP30.3..

Fluid used: mineral based oil with viscosity 46 mm²/s at 40°C.

ORDERING CODE

