



# AM66... MODULAR COMPENSATED FLOW CONTROL ASSEMBLY CETOP 3



This is an intermediate block for modular mounting of one or two flow rate regulators type QC.3...

The flow regulator type QC3\* must be ordered separately.

Max. operating pressure	320 bar
Hydraulic fluids	Mineral oils DIN 51524
Fluid viscosity	10 ÷ 500 mm <sup>2</sup> /s
Fluid temperature	-25°C ÷ 75°C
Ambient temperature	-25°C ÷ 60°C
Max. contamination level	class 10 in accordance with NAS 1638 with filter $\beta_{25} \geq 75$
Weight	1,3 Kg

### AM.66...

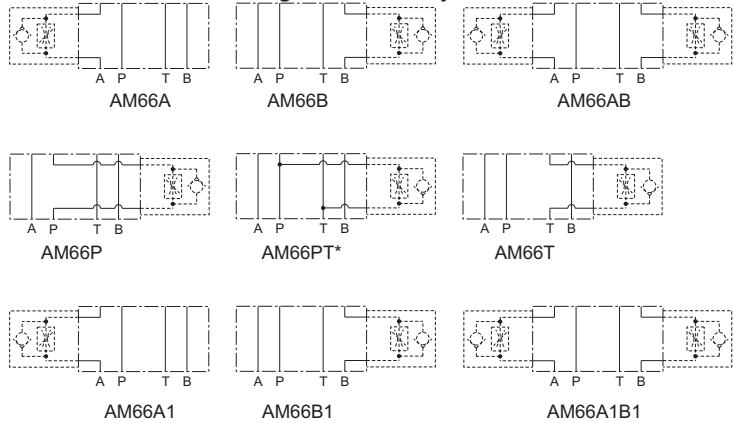
QC32...	CH. III PAGE 2
QC33...	CH. III PAGE 3
SCREWS AND STUDS	CH. IV PAGE 21

### ORDERING CODE

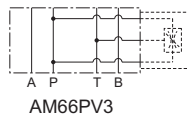
<b>AM</b>	Modular valve
<b>66</b>	Size
<b>**</b>	Control on lines <b>A / B / P / PT* / AB</b> For T / A1 / B1 / A1B1 versions see table "Hydraulic symbols"
<b>**</b>	<b>00</b> = No variant <b>V3</b> = regulators for three-way QC33 (only with adjustment of P) <b>V1</b> = Viton
<b>3</b>	Serial No.

### HYDRAULIC SYMBOLS

#### For regulators two-way QC32



#### For regulators for three-way QC33

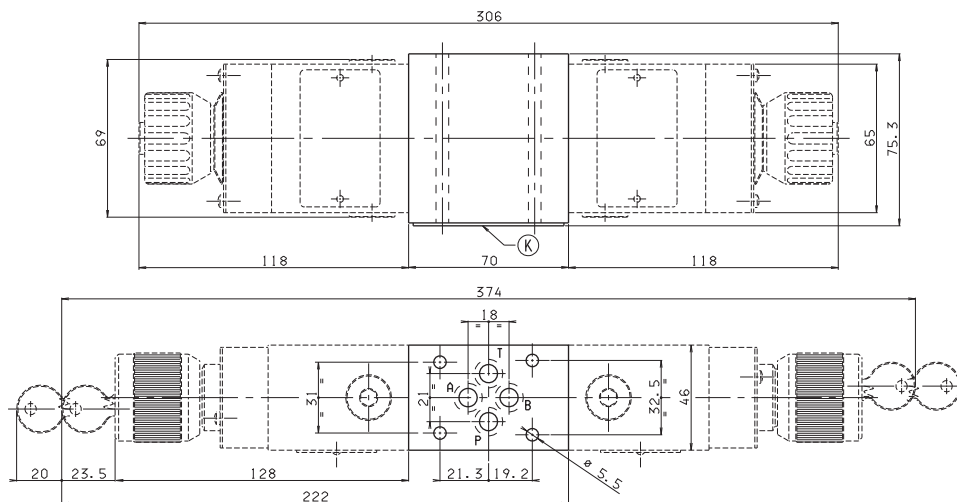


**PT \*** = From line towards exhaust (P → T drain)

• In order to obtain versions with regulation on **T**, the AM66P regulator carrying block should be turned by 180°.

• In order to obtain versions **A1**, **B1** and **A1B1** the AM66A, AM66B or AM66AB regulators carrying block should be turned by 180°.

### OVERALL DIMENSIONS



**K** = OR plate

Support plane specifications

