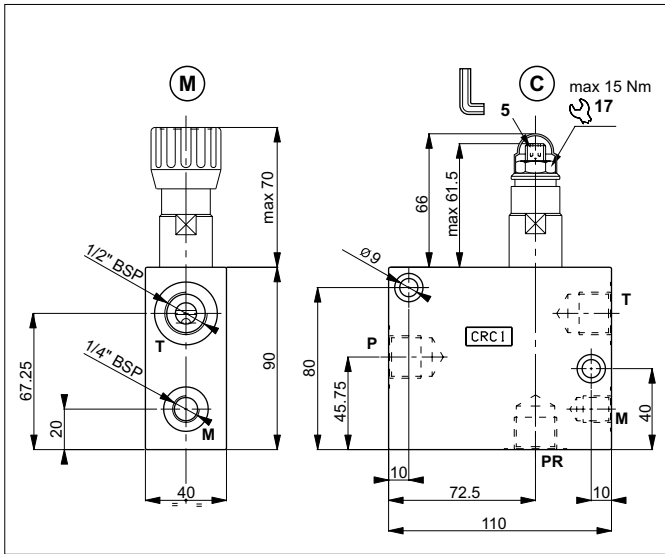


## PRESSURE REDUCING AND SEQUENCE VALVES - IN-LINE MOUNTING

2



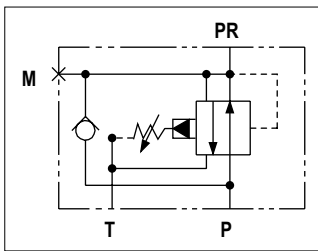
The CRC.1 aluminium body allows the in-line mounting connections for CVS.20 sequence and CVR.20 pressure reducing valves. In the version with pressure reducing valve the pump supply is connected to the port P, while in the version sequence valve is connected to the mouth PR.

For pressure reducing version the body is provided with a one-way check valve, which allows free flow to opposite direction (PR toward P)

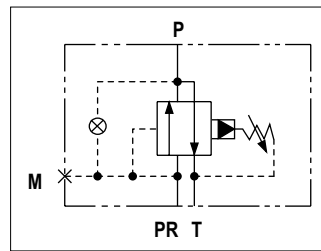
For the sequence version a blind grub screw has been placed instead of a check valve.

- Mounting the blind grub screw , code **M78100013**, it is possible to transform the body from reducing valve to sequence valve.
- Mounting the blind grub screw , code **V70052204**, it is possible to transform the body from sequence valve to reducing valve.

### HYDRAULIC SYMBOLS



Reducing valve version

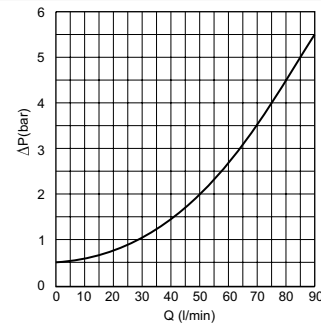


Sequence valve version

### HYDRAULIC FEATURES

Max. pressure	350 bar
Setting range:	
Spring 1 (white)	max 60 bar
Spring 2 (yellow)	max 120 bar
Spring 3 (green)	max 250 bar
Max. Flow	90 l/min
Max. draining on port T	0.5 ÷ 0.7 l/min
Hydraulic fluid	DIN 51524 Mineral oils
Fluid viscosity	10 ÷ 500 mm <sup>2</sup> /s
Fluid temperature	-25°C ÷ 75°C
Ambient temperature	-25°C ÷ 60°C
Max. contamin. level class with filter	ISO 4406:1999 - class 19/17/14
Weight	1.224 kg

### FREE FLOW THROUGH THE CHECK VALVE



Fluid used: mineral based oil with viscosity 46 mm<sup>2</sup>/s at 40°C.

### ORDERING CODE

<b>CRC</b>	<b>1</b>	<b>*</b>	<b>*</b>	<b>*</b>	<b>**</b>	<b>1</b>
Series	Size	Adjustment	Adjustment	Adjustment	Variants	Setting ranges
<b>CRC</b> = Sequence and pressure reducing cartridge valve Size 20 (seat M22x1,5)	<b>1</b> = Size connection 1/2" BSP	<b>R</b> = Pressure reducing cartridge valve <b>S</b> = Sequence cartridge valve	<b>M</b> = Plastic knob <b>C</b> = Screw <b>O</b> = Without cartridge valve	<b>1</b> = Serial No.	<b>00</b> = No variants <b>V1</b> = Viton	<b>1</b> = 60 bar (white spring) <b>2</b> = 120bar (yellow spring) <b>3</b> = 250 bar (green spring) <b>0</b> = Without cartridge valve