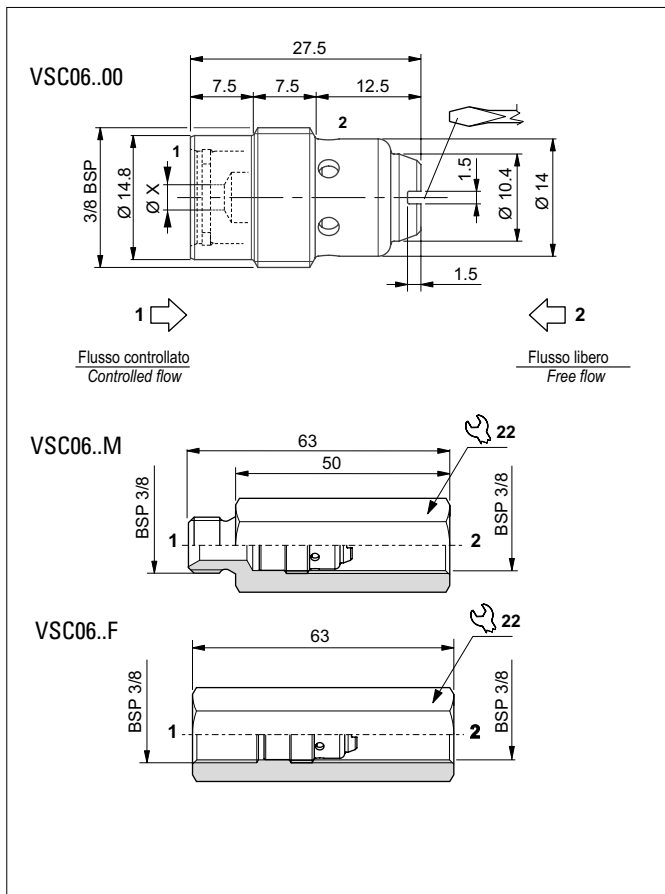


FIXED COMPENSATED FLOW CONTROL VALVE

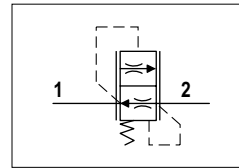


The flow control valve maintains a steady flow in a single direction (1 to 2) regardless of oil pressure.
The flow is reduced by the control hole X which determines the flow rate.
Steel body. Compensator plunger in ground steel.

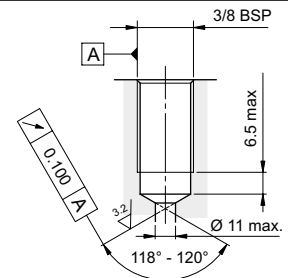
HYDRAULIC FEATURES

Max. working pressure	250 bar
ΔP of regulation	6.0 ÷ 6.8 bar 2,2 bar (code 10-12 tab. 1)
Max. Flow	18.5 l/min
Hydraulic fluid	DIN 51524 Mineral oils
Fluid viscosity	10 ÷ 500 mm ² /s
Fluid temperature	-25°C ÷ 75°C
Ambient temperature	-25°C ÷ 60°C
Max. contamin. level class with filter	ISO 4406:1999 - class 19/17/14
Weight	0.026 kg
Tightening torque	6 ÷ 8 Nm

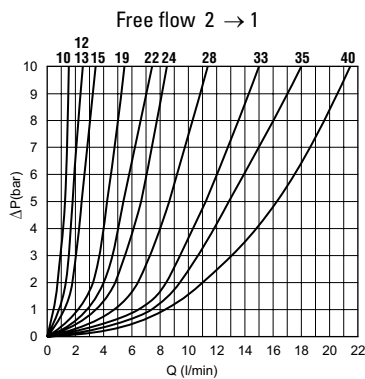
HYDRAULIC SYMBOL



SEAL (FOR VSC06..00)



PRESSURE DROPS



Fluid used: mineral based oil with viscosity 46 mm²/s at 40°C.

FLOW CONTROLLED BY "X" PORT

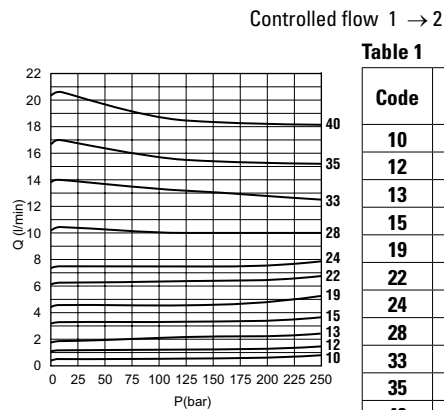


Table 1

Code	Ø X (mm)	Nominal flow at 120 bar (l/min)
10	1.00	0.7
12	1.25	1.1
13	1.25	2.1
15	1.50	3.2
19	1.90	4.7
22	2.20	6.3
24	2.40	7.5
28	2.75	10.0
33	3.25	13.2
35	3.50	15.7
40	4.00	18.5

ORDERING CODE

