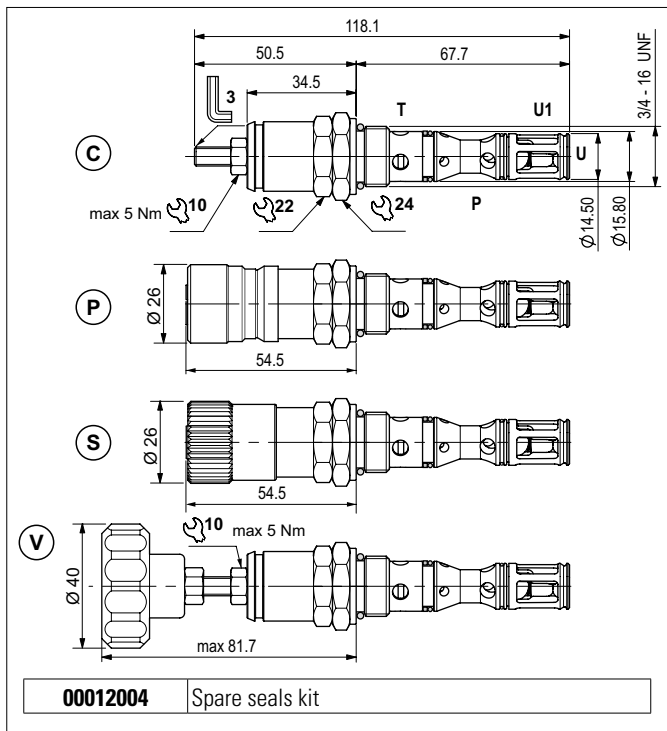


DIRECT ACTING PRESSURE RELIEF VALVES WITH ONE-WAY CHECK VALVE

1

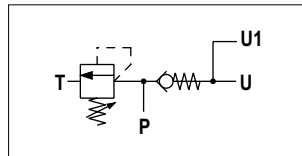


The valve has a combined function in a single cartridge. It consists of a direct acting maximum pressure valve and a unidirectional check valve. The relief valve raises the safety level by making it impossible for the plant operators to set a higher pressure rating, than that specified in the catalogue. It has a pack spring with a mechanical stop. The spring in the check valve enables the cartridge to be mounted in any position. It has a galvanised steel body. The tapered poppet of the relief valve and the guided ball poppet are made from tempered and ground steel.

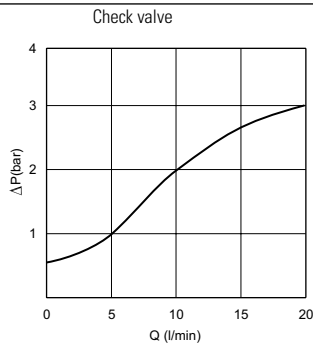
HYDRAULIC FEATURES

Max. working pressure	320 bar
Max. Flow	20 l/min
Setting ranges (spring)	1 = 10 ÷ 60 bar (green) 2 = > 60 ÷ 180 bar (yellow) 3 = > 180 ÷ 320 bar (blue)
One-way check	0,5 bar (standard)
Check valve leakage (0 ÷ 5 drops/min)	0 ÷ 0.25 cm ³ /min
Hydraulic fluid	DIN 51524 Mineral oils
Fluid viscosity	10 ÷ 500 mm ² /s
Fluid temperature	-25°C ÷ 75°C
Ambient temperature	-25°C ÷ 60°C
Max. contamin. level class with filter	ISO 4406:1999 - class 19/17/14
Weight	0.18 kg
Tightening torque	25 ÷ 30 Nm
Cavity (3/4 - 16 UNF)	CD018013 (See section 17)

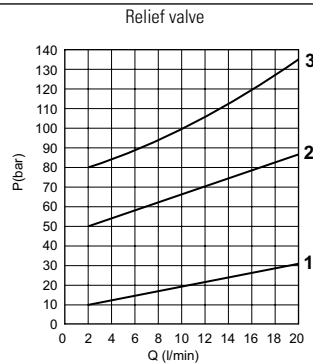
HYDRAULIC SYMBOL



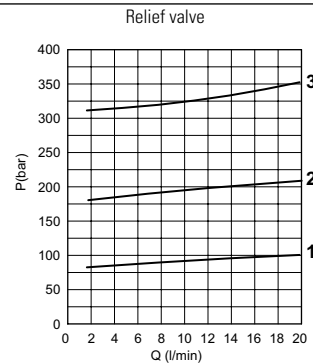
PRESSURE DROPS (P → U)



MIN. SETTING PRESSURE (P → T)

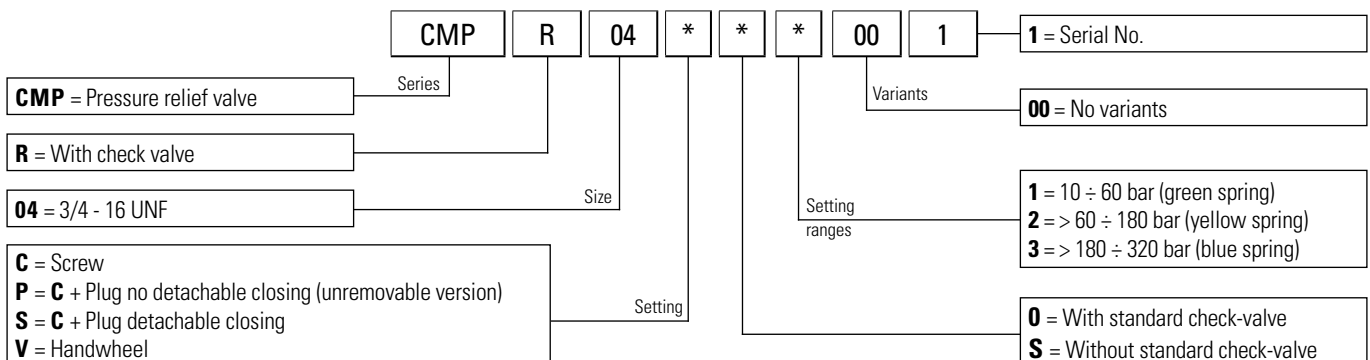


PRESSURE - FLOW (P → T)



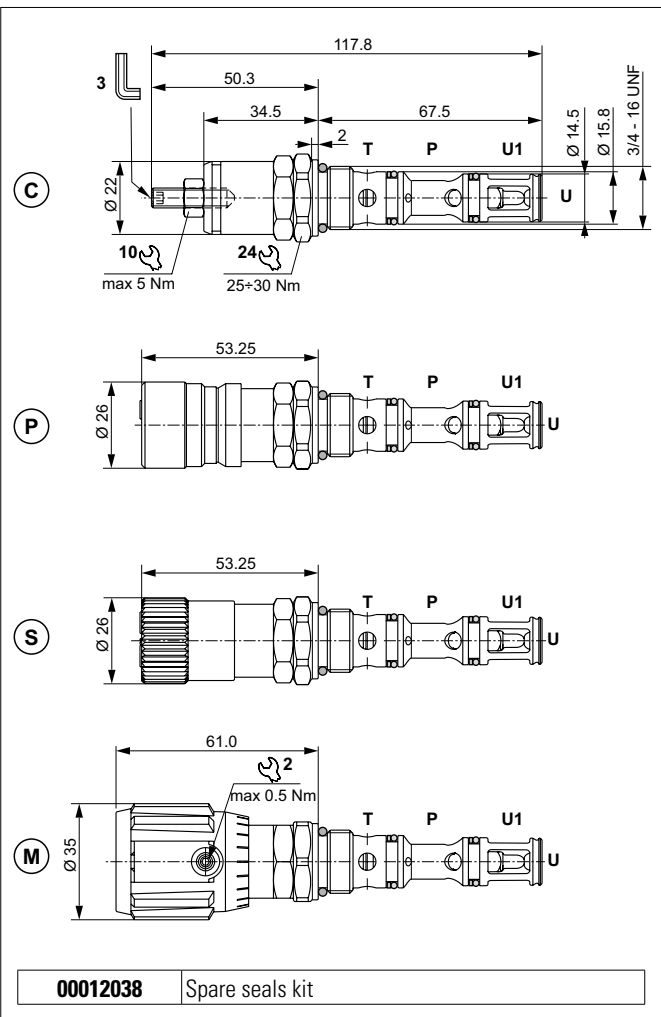
Fluid used: mineral based oil with viscosity 32 mm²/s at 50°C.

ORDERING CODE

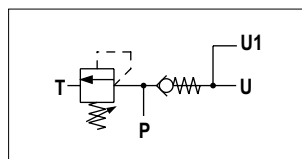


DIRECT ACTING PRESSURE RELIEF VALVES WITH ONE-WAY CHECK VALVE

1



HYDRAULIC SYMBOL



The valve has a combined function in a single cartridge. It consists of a direct acting maximum pressure valve and a unidirectional check valve. The relief valve raises the safety level by making it impossible for the plant operators to set a higher pressure rating, than that specified in the catalogue. It has a pack spring with a mechanical stop.

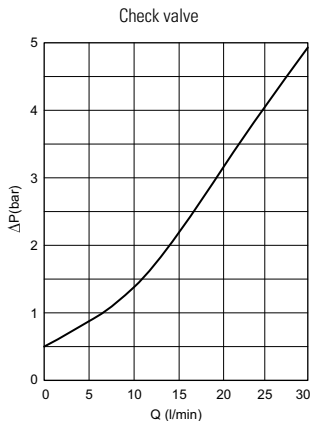
The spring in the check valve enables the cartridge to be mounted in any position.

It has a galvanised steel body. The tapered poppet of the relief valve and the guided ball poppet are made from tempered and ground steel.

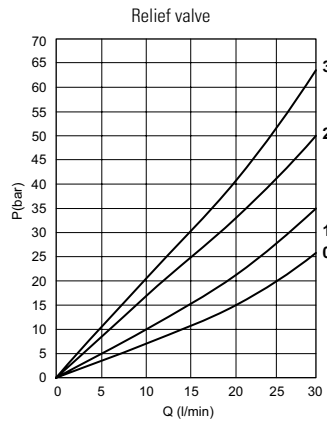
HYDRAULIC FEATURES

Max. working pressure	350 bar
Max. Flow	30 l/min
Setting range: Spring 0 (white) Spring 1 (green) Spring 2 (yellow) Spring 3 (red)	max 50 bar max 110 bar max 220 bar max 350 bar
One-way check valve	0,5 bar (standard)
Check valve leakage (0 ÷ 5 drops/min)	0 ÷ 0.25 cm ³ /min
Hydraulic fluid	DIN 51524 Mineral oils
Fluid viscosity	10 ÷ 500 mm ² /s
Fluid temperature	-25°C ÷ 75°C
Ambient temperature	-25°C ÷ 60°C
Max. contamin. level class with filter	ISO 4406:1999 - class 19/17/14
Weight	0.15 kg
Tightening torque	25 ÷ 30 Nm
Cavity (3/4 - 16 UNF)	CD018013 (See section 17)

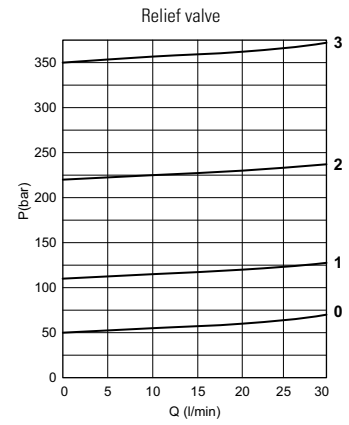
PRESSURE DROPS (P → U)



MIN. SETTING PRESSURE (P → T)



PRESSURE - FLOW (P → T)



0 = CMPR04*0 - 1 = CMPR04*1.. - 2 = CMPR04*2.. - 3 = CMPR04*3..
 Fluid used: mineral based oil with viscosity 46 mm²/s at 40°C.

ORDERING CODE

