

# AM2QF... MODULAR FLOW REGULATOR CETOP 2



AM.2.QF...

SCREWS AND STUDS

CH. IV PAGE 6

AM.2.QF type one way non-compensated throttle valves are adjustable by means of a grub screw.

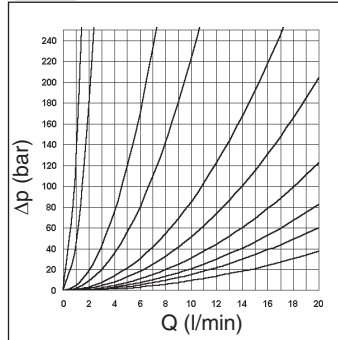
Three types of regulations are available on A / B / AB lines, as shown in the hydraulic symbols.

Max. operating pressure	250 bar
Flow rate regulation	on 6 screw turns
Max. flow.	20 l/min
Hydraulic fluids	Mineral oils DIN 51524
Fluid viscosity	10 ÷ 500 mm <sup>2</sup> /s a 50°C
Fluid temperature	-20°C ÷ 75°C
Max. contamination level	class 10 in accordance with NAS 1638 with filter β <sub>25</sub> ≥ 75
Weight AM.2.QF.A/B...	0,5 Kg
Weight AM.2.QF.AB...	0,6 Kg

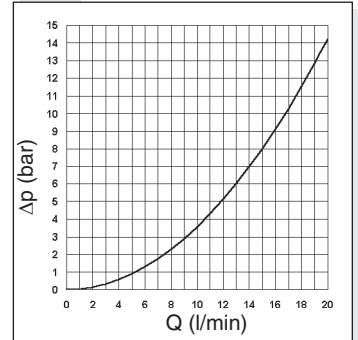
### ORDERING CODE

<b>AM</b>	Modular valve
<b>2</b>	CETOP 2/NG4
<b>QF</b>	Non-compensated flow rate regulator
<b>**</b>	Control on lines <b>A / B / AB</b>
<b>C</b>	Type of adjustment grub screw
<b>**</b>	<b>00</b> = No variant <b>V1</b> = Viton
<b>1</b>	Serial No.

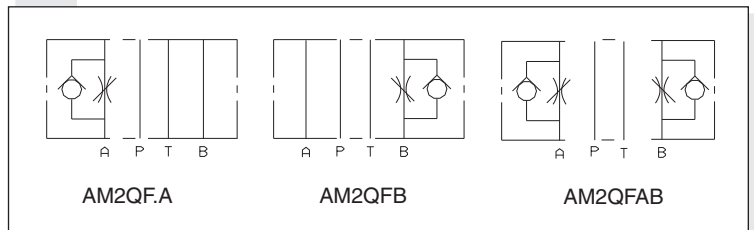
### FLOW REGULATION



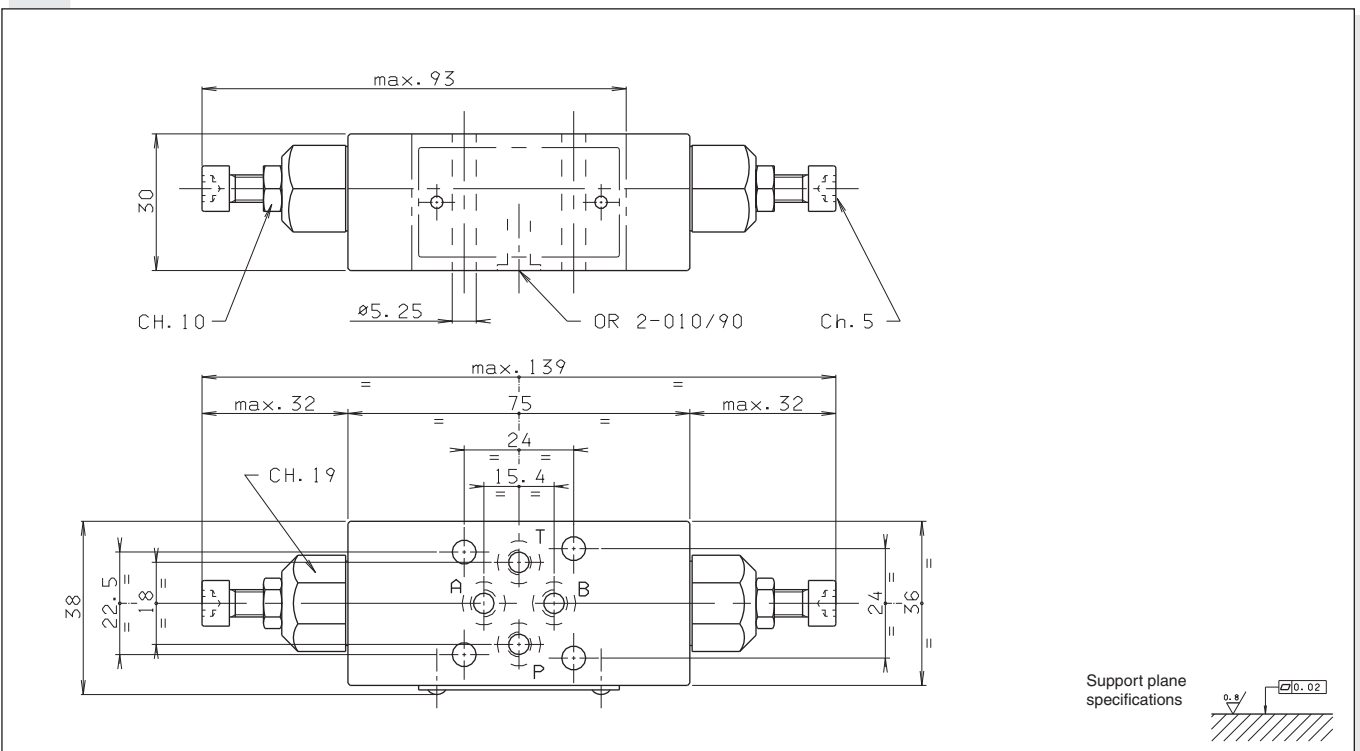
### FREE FLOW THROUGH CHECK VALVE



### HYDRAULIC SYMBOLS

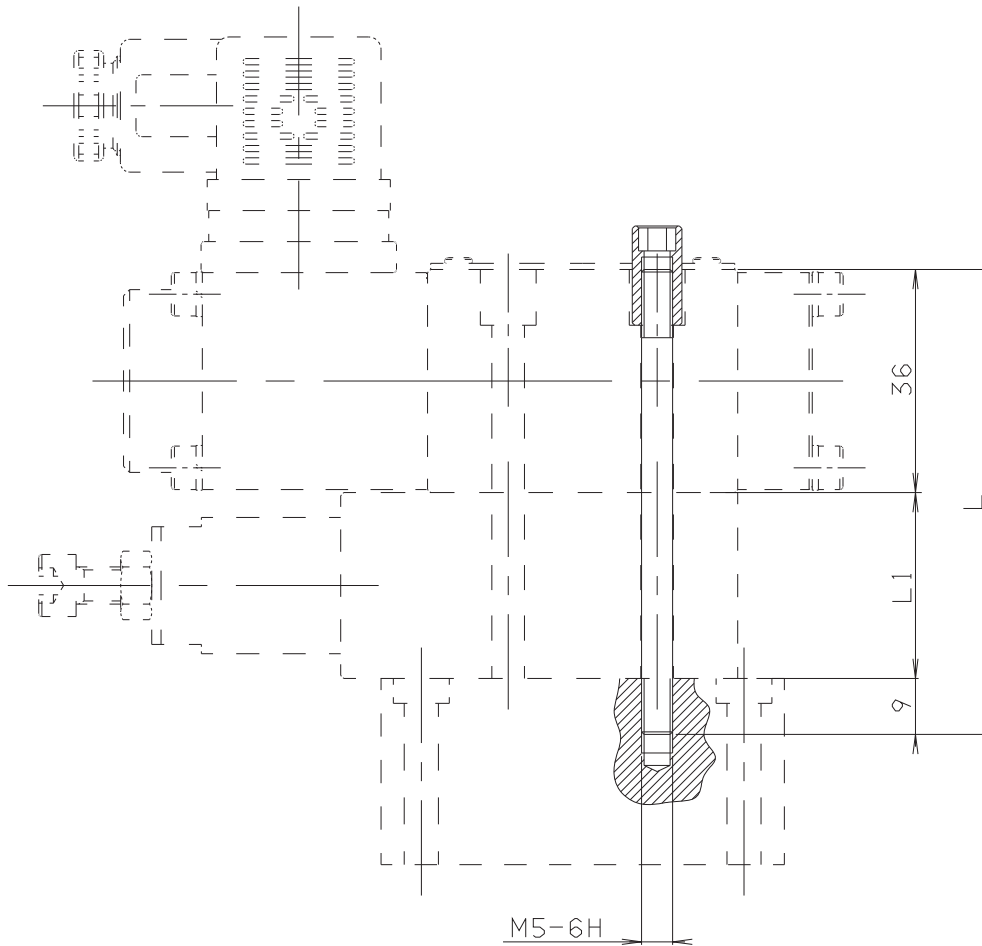


### OVERALL DIMENSIONS



OVERALL DIMENSIONS

Tighten M27.05.0001 to a torque of 5 Nm / 0.5 Kgm max.



4

SCREWS T.C.E.I CODE	L mm	L1* mm	COMPOSITION	Q.TY	SPECIAL NUTS CODE
Q26074069	35	—	AD2...	4	—
Q26074243	65	30	AD2... + 1 AM2... (ISO)	4	
Q26074252	95	60	AD2... + 2 AM2... (ISO)	4	
M80100008	135	90	AD2... + 3 AM2...	4	V89240000 (No. 20 nuts kit)
M80100020	165	120	AD2... + 4 AM2...	4	

\* Indicative overall dimensions valves composition