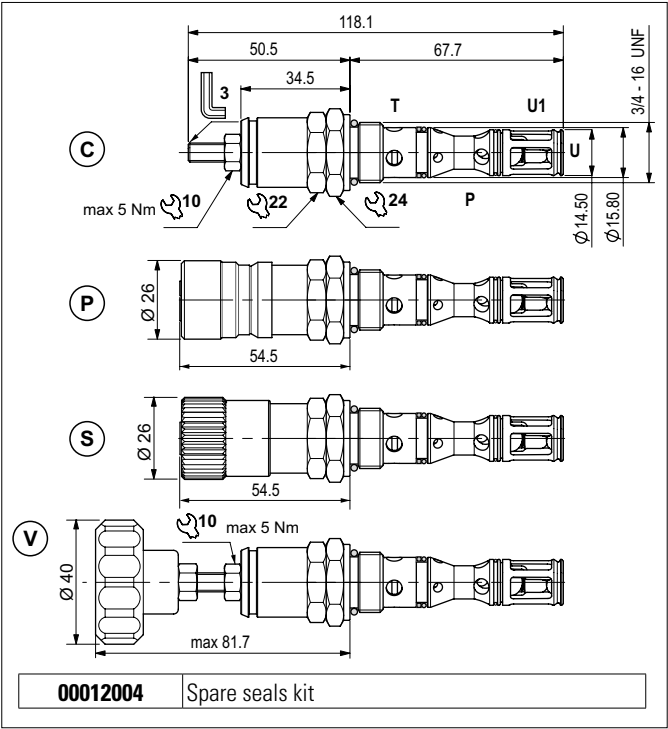


## DIRECT ACTING HIGH PRESSURE RELIEF VALVES WITH ONE-WAY CHECK VALVE

1

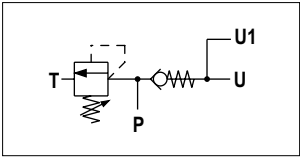


The valve has a combined function in a single cartridge. It consists of a direct acting maximum pressure valve and a unidirectional check valve. The relief valve raises the safety level by making it impossible for the plant operators to set a higher pressure rating, than that specified in the catalogue. It has a pack spring with a mechanical stop. The spring in the check valve enables the cartridge to be mounted in any position. It has a galvanised steel body. The tapered poppet of the relief valve and the guided ball poppet are made from tempered and ground steel.

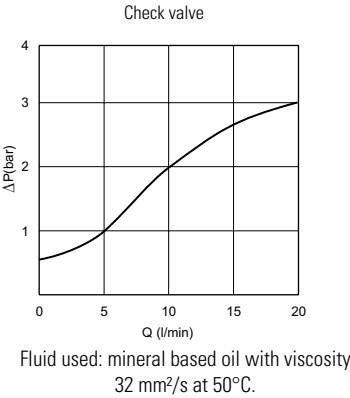
### HYDRAULIC FEATURES

Max. working pressure	360 bar
Max. Flow	15 l/min
Setting ranges (spring)	<b>1</b> = > 320 ÷ 360 bar (blue)
One-way check	0.5 bar (standard)
Check valve leakage (0 ÷ 5 drops/min)	0 ÷ 0.25 cm <sup>3</sup> /min
Hydraulic fluid	DIN 51524 Mineral oils
Fluid viscosity	10 ÷ 500 mm <sup>2</sup> /s
Fluid temperature	-25°C ÷ 75°C
Ambient temperature	-25°C ÷ 60°C
Max. contamin. level class with filter	ISO 4406:1999 - class 19/17/14
Weight	0.18 kg
Tightening torque	25 ÷ 30 Nm
Cavity (3/4 - 16 UNF)	CD018013 (See section 17)

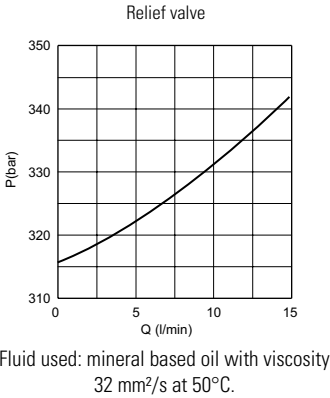
### HYDRAULIC SYMBOL



### PRESSURE DROPS (P → U)



### PRESSURE - FLOW (P → T)



### ORDERING CODE

<b>CMPH</b>	<b>R</b>	<b>04</b>	<b>*</b>	<b>*</b>	<b>1</b>	<b>00</b>	<b>1</b>	<b>1</b> = Serial No.
<b>CMPH</b> = High pressure relief valve	Series					Variants		<b>00</b> = No variants
<b>R</b> = With check valve		Size						
<b>04</b> = 3/4 - 16 UNF						Setting ranges		<b>1</b> = > 320 ÷ 360 bar (blue spring)
<b>C</b> = Screw								<b>0</b> = With standard check-valve
<b>P</b> = <b>C</b> + Plug no detachable closing (unremovable version)								<b>S</b> = Without standard check-valve
<b>S</b> = <b>C</b> + Plug detachable closing								
<b>V</b> = Handwheel								