

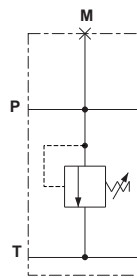
INLET MODULE UNITS WITH PRESSURE RELIEF VALVE



Module units FE305 with CMP30 adjustable pressure relief valve.

- Manual adjustment with a grub screw or plastic knob.
- Threaded ports P-T sizes G1/2"
- Maximum flow 80 l/min.
- Cast iron zinc plated body.

HYDRAULIC SYMBOL



FEATURES

Max. operating pressure	310 bar
Max. Flow	80 l/min
Hydraulic fluid	DIN 51524 Mineral oils
Fluid viscosity	10 ÷ 500 mm ² /s
Fluid temperature	-25°C ÷ 75°C
Ambient temperature	-25°C ÷ 60°C
Max. contamination level (filter $\beta_{25} \geq 75$)	ISO 4406:1999: class 21/19/16 NAS 1638: class 10
Weight	1.85 kg

Pressure relief valve (CMP30...)

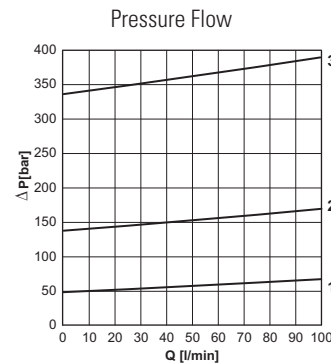
Setting range (*):	
Spring 1	max 50 bar
Spring 2	max 140 bar
Spring 3	max 350 bar

(*) The minimum permissible setting pressure depending on the spring: see curves.

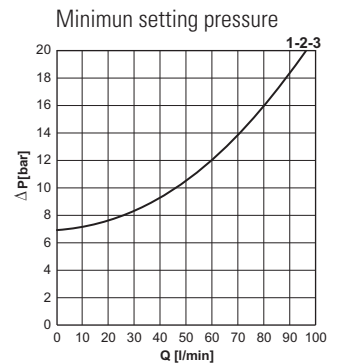
ORDERING CODE

- FE30** Inlet module unit (up to 80 l/min) with pressure relief valve
- 5** Size
- 3** Port sizes:
3 = G1/2"
- *** Adjustment:
M = Plastic knob
C = Grub screw
- *** Setting ranges
1 = max. 50 bar (white spring)
2 = max. 140 bar (yellow spring)
3 = max. 350 bar (green spring)
- **** **00** = No variant
V1 = Viton
- 1** Serial No.

PRESSURE-FLOW RATE

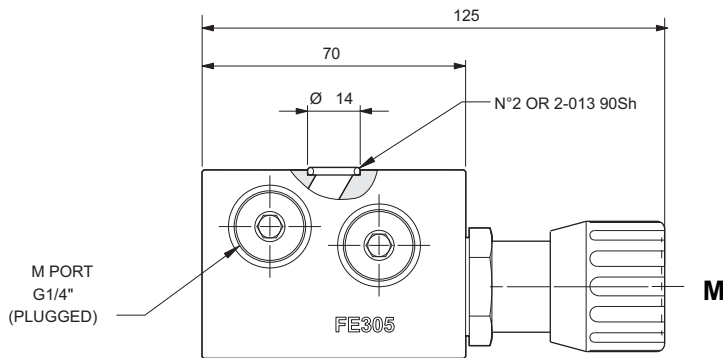
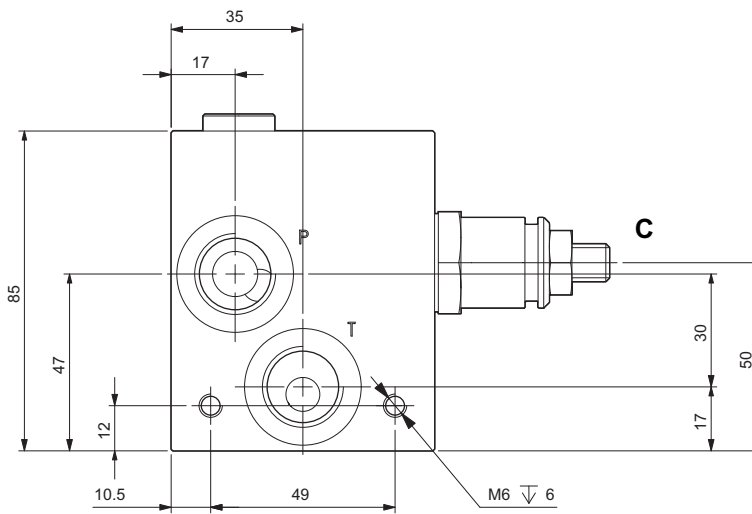
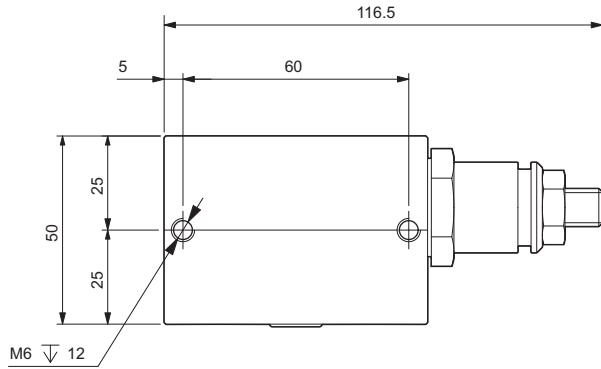


MIN.SETTING PRESSURE



1 = max 50 - bar - **2** = max 140 bar - **3** = max 350 bar
Fluid used: mineral based oil with viscosity 46 mm²/s at 40°C.

OVERALL DIMENSIONS



C = Grub screw
M = Plastic knob

2