



## AM.2.UD... MODULAR DIRECT CHECK VALVES CETOP 2

**brevini**

AM.2.UD type modular check valves allow one way free flow, while preventing any flow in the opposite direction by means of a conical seated poppet.

They are available on single P and T lines (see hydraulic symbols).

1 bar spring is standard, while a 5 bar rated spring is available on request.

Max. operating pressure	250 bar
Minimum opening pressure spring 1	1 bar
Minimum opening pressure spring 5	5 bar
Max. flow	20 l/min
Hydraulic fluids	Mineral oils DIN 51524
Fluid viscosity	10 ÷ 500 mm <sup>2</sup> /s a 50°C
Fluid temperature	-20°C ÷ 75°C
Max. contamination level	class 10 in accordance with NAS 1638 with filter $\beta_{25} \geq 75$
Weight	0,4 Kg

### AM.2.UD...

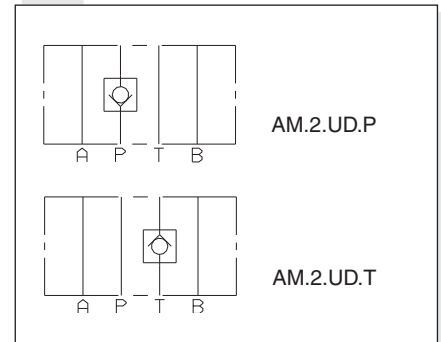
SCREWS AND STUDS

CH. IV PAGE 6

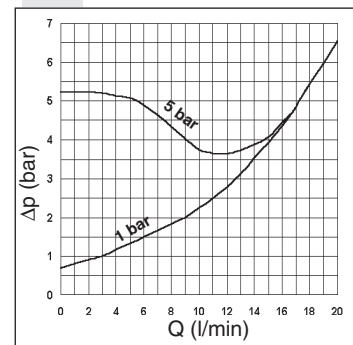
### ORDERING CODE

<b>AM</b>	Modular valve
<b>2</b>	CETOP 2/NG4
<b>UD</b>	Direct check valve
<b>*</b>	Control on lines <b>P / T</b>
<b>*</b>	Minimum opening pressure <b>1</b> = 1 bar <b>5</b> = 5 bar
<b>**</b>	<b>00</b> = No variant <b>V1</b> = Viton
<b>1</b>	Serial No.

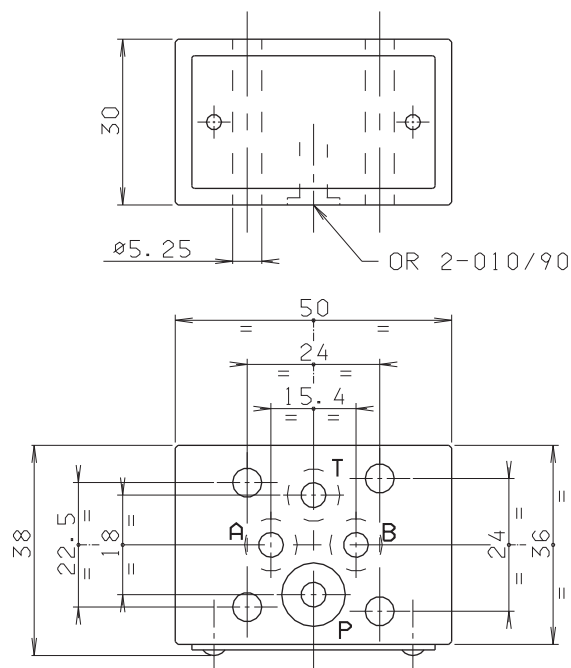
### HYDRAULIC SYMBOLS



### PRESSURE DROPS



### OVERALL DIMENSIONS



Support plane specifications

