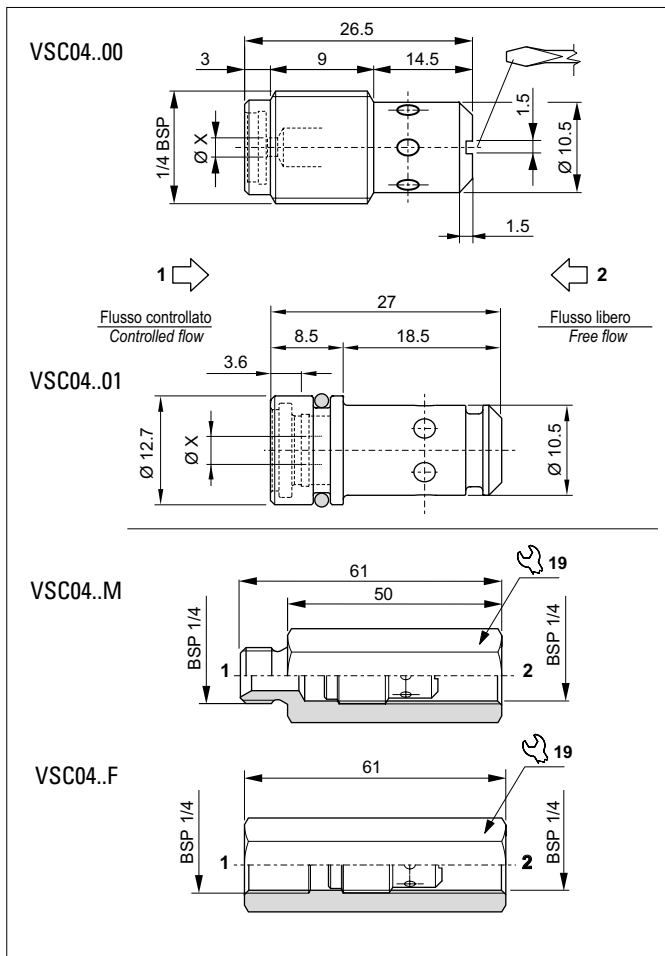


FIXED COMPENSATED FLOW CONTROL VALVE

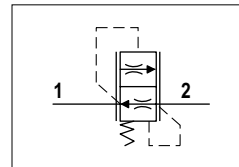


The flow control valve maintains a steady flow in a single direction (1 to 2) regardless of oil pressure.
 The flow is reduced by the control hole X which determines the flow rate.
 Steel body. Compensator plunger in ground steel.

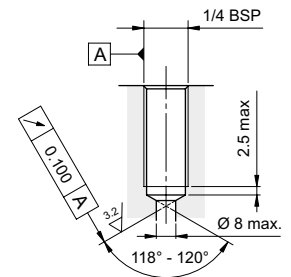
HYDRAULIC FEATURES

Max. working pressure	250 bar
ΔP of regulation	5.4 ÷ 6.3 bar (2.3 bar variant 04)
Max. Flow	11.7 l/min
Hydraulic fluid	DIN 51524 Mineral oils
Fluid viscosity	10 ÷ 500 mm ² /s
Fluid temperature	-25°C ÷ 75°C
Ambient temperature	-25°C ÷ 60°C
Max. contamin. level class with filter	ISO 4406:1999 - class 19/17/14
Weight	0.014 kg
Tightening torque	6 ÷ 8 Nm
Cavity (for VSC04..01)	CD018009 (See section 17)

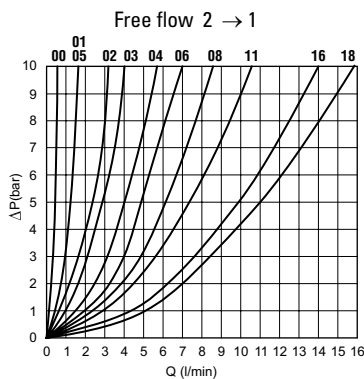
HYDRAULIC SYMBOL



SEAL (FOR VSC04..00)



PRESSURE DROPS



Fluid used: mineral based oil with viscosity 46 mm²/s at 40°C.

FLOW CONTROLLED BY "X" PORT

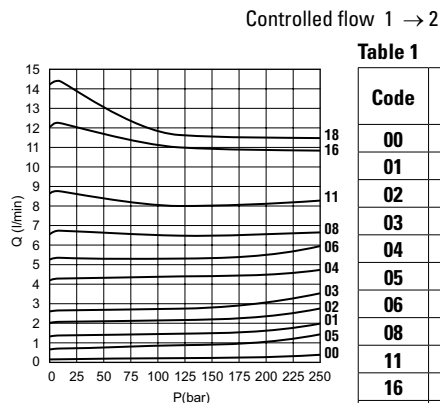


Table 1

Code	Ø X (mm)	Nominal flow at 120 bar (l/min)
00	0.50	0.3 (variant 04)
01	1.00	1.4
02	1.25	2.3
03	1.50	2.8
04	1.75	4.3
05	1.00	1.0 (variant 04)
06	2.00	5.2
08	2.25	6.5
11	2.50	8.0
16	3.00	11.1
18	3.20	11.7

ORDERING CODE

