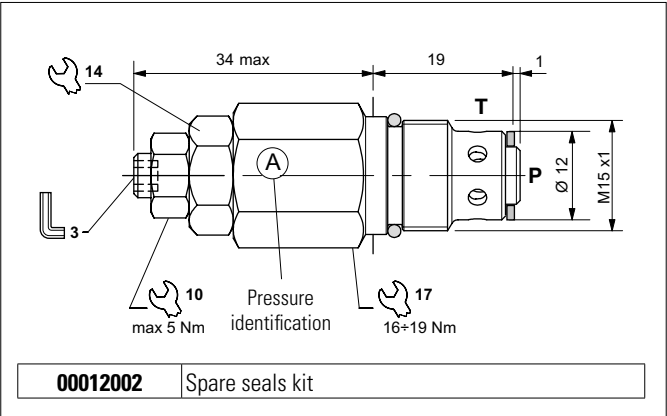
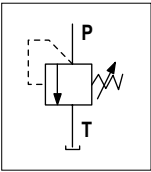


## DIRECT ACTING PRESSURE RELIEF VALVES (FOR POWER PACKS SERIES MR/MW)



### HYDRAULIC SYMBOL



### ORDERING CODE

Code	Identification (see draw)	Setting range	Pressure increasing at each turn of screw
21000010.000	A	25 ÷ 80 bar	17 bar ± 10%
21000011.000	B	75 ÷ 220 bar	45 bar ± 10%
21000009.000	C	5 ÷ 30 bar	7 bar ± 10%

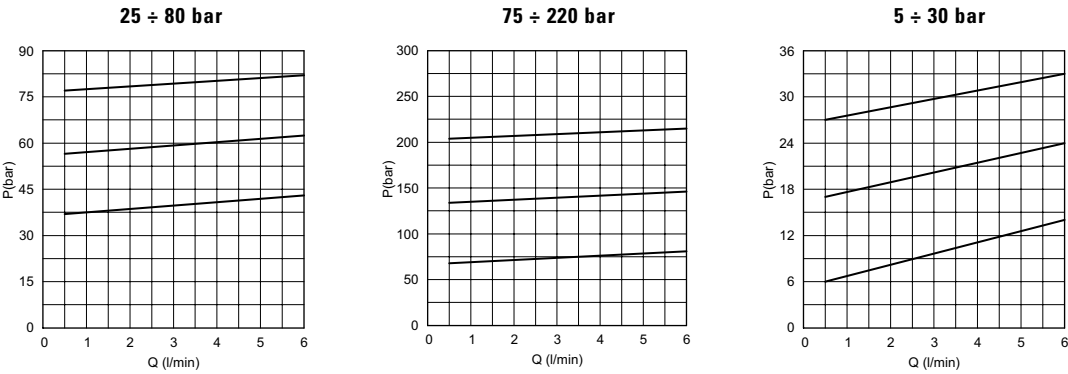
The direct acting relief valve limits the pressure in a hydraulic circuit. It raises the safety level by making it impossible for the plant operators to set a higher pressure rating, than that specified in the catalogue. It has a pack spring with a mechanical stop. It has a galvanised steel body. The guided ball poppet is in tempered and ground steel.

### HYDRAULIC FEATURES

Max. working pressure	220 bar
Setting range:	
Spring A	25 ÷ 80 bar
Spring B	75 ÷ 220 bar
Spring C	5 ÷ 30 bar
Max. Flow	6 l/min
Hydraulic fluid	DIN 51524 Mineral oils
Fluid viscosity	10 ÷ 500 mm <sup>2</sup> /s
Fluid temperature	-25°C ÷ 75°C
Ambient temperature	-25°C ÷ 60°C
Max. contamin. level class with filter	ISO 4406:1999 - class 19/17/14
Weight	0.05 kg
Tightening torque	see draw
Cavity (M15x1)	CN033001 (See section 17)

The minimum permissible setting pressure depending on the spring: see curves below

### PRESSURE-FLOW RATE



Fluid used: mineral based oil with viscosity 32 mm<sup>2</sup>/s at 50°C.