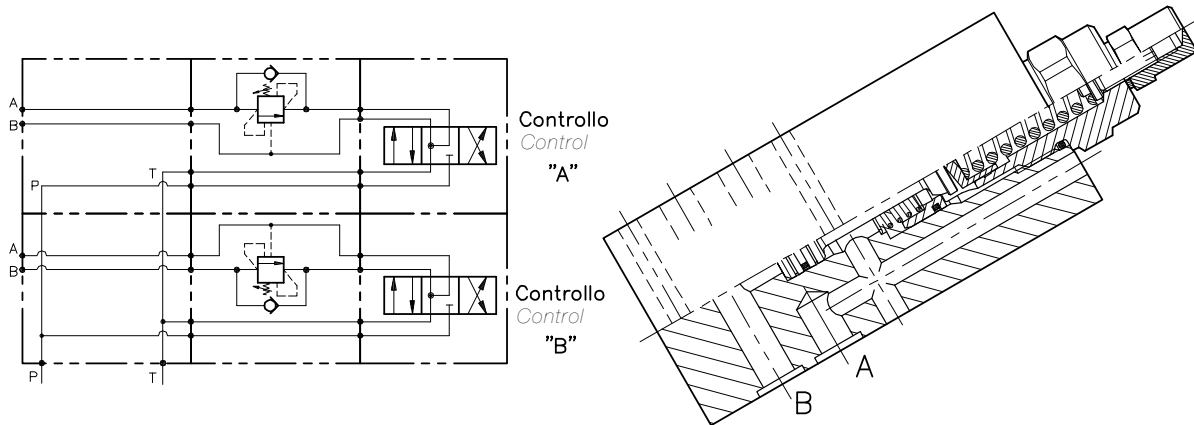


OWC-SE-L10-...

VALVOLA BILANCIAMENTO, BLOCCO E CONTROLLO DISCESA A SEMPLICE EFFETTO CON MONTAGGIO CETOP

SINGLE COUNTERBALANCE WITH SANDWICH INSTALLATION (CETOP)



CARATTERISTICHE

Luce nominale	DN 10
Portata min/max	1/90 l/min - 0.26/24 GPM
Pressione di lavoro max.	350 bar - 5075 PSI
Pressione max. di taratura	350 bar - 5075 PSI
Rapporto di pilotaggio standard	6.2 : 1
Temperatura ambiente	-30°C + 50°C
Temperatura olio	-30°C + 80°C
Filtraggio consigliato	30 micron
Peso	
Peso	

PERFORMANCE

Rated size
Min/max flow-rate
Max working pressure
Max setting pressure
Standard pilot ratio
Room temperature
Oil temperature
Recommended filtration
Weight
Weight

NOTE:

La taratura deve essere **1.3** volte maggiore della pressione indotta dal carico.

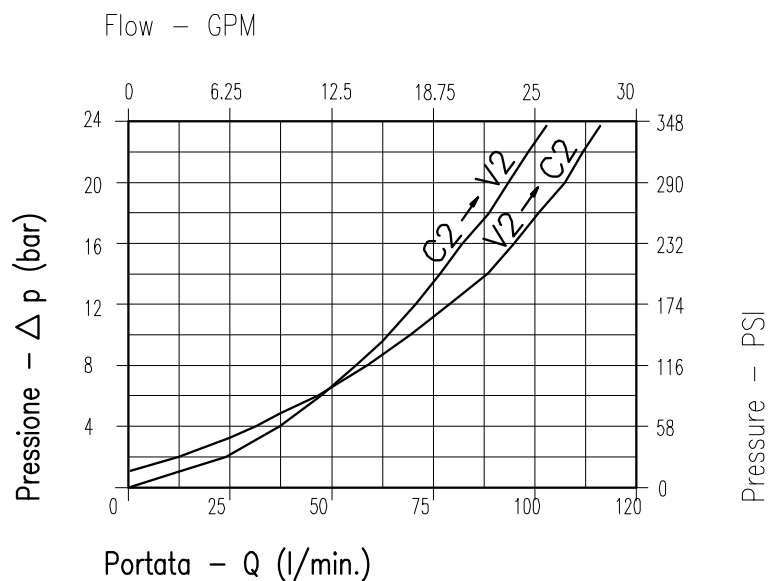
Valve should be set at **1.3** times load induced pressure.

ESEMPIO/EXAMPLE:

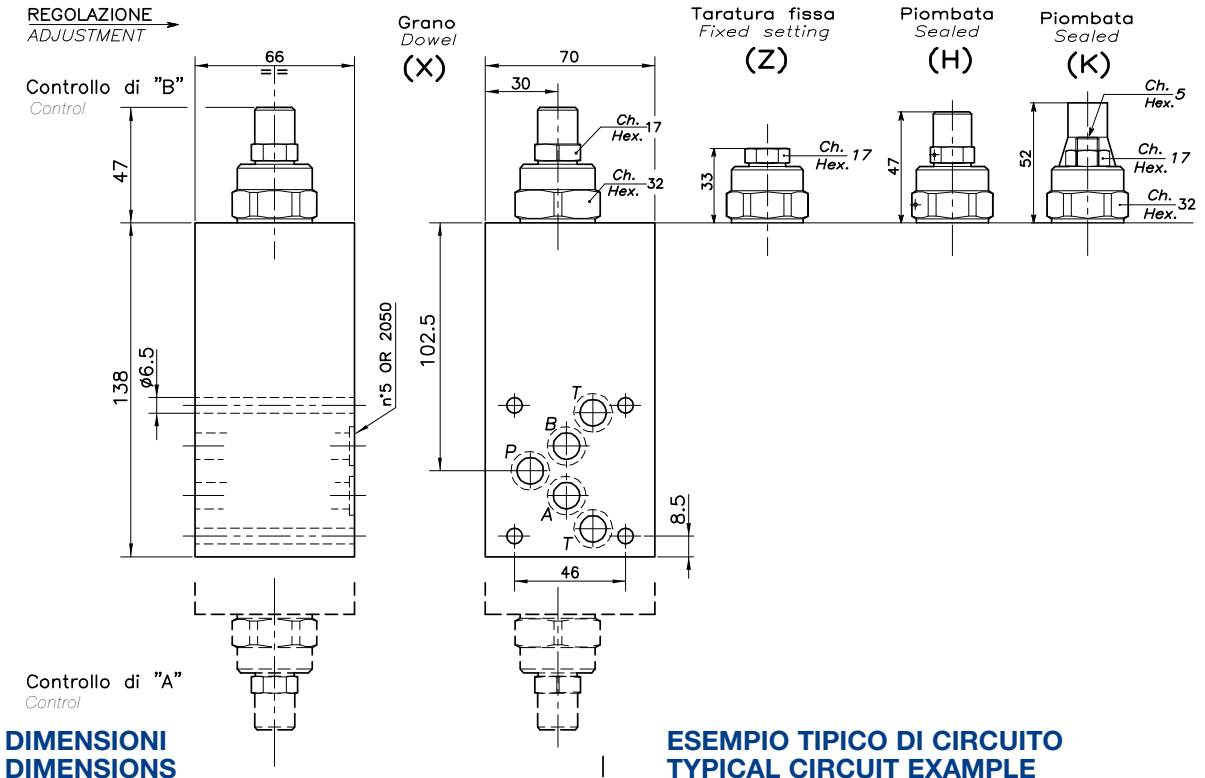
Pressione di lavoro max:

Max working pressure:

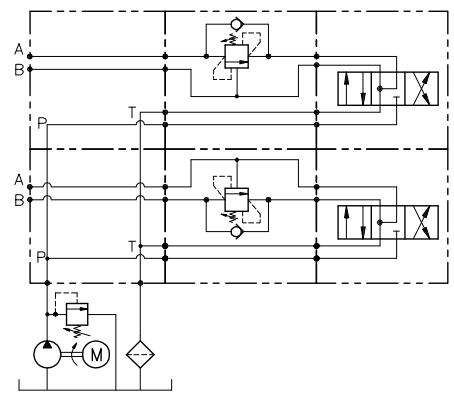
350 bar / 1.3 = 270 bar



Viscosità olio 46 cSt a 50°C
Oil viscosity 46 cSt at 50°C



Campo taratura / Setting range	Tipo flangia / Flange type	Portata max / Max flow-rate / l/min - GPM	Controllo / Control
483	CETOP 05	90-24	A
484	CETOP 05	90-24	B



CODICE DI ORDINAZIONE / HOW TO ORDER

