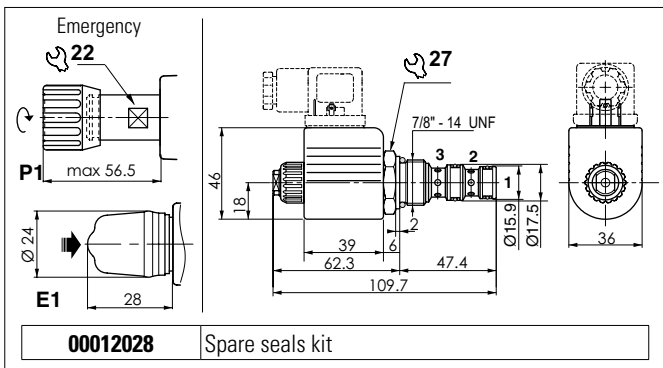


SOLENOID VALVES 3 WAY 2 POSITIONS

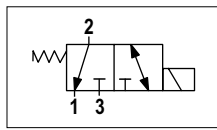


The electric valve is a 3-way 2-position directional electrically controlled valve.
Slight leakage is tolerated for this type of valve.
Available in 2 layouts.
The valves work with DC coils whereas RAC coils with a connector with incorporated rectifier must be used for AC applications.
The sleeve is in galvanised steel. The plunger is in tempered and ground steel.

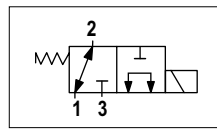
HYDRAULIC FEATURES

Max. working pressure	250 bar
Max. Flow	20 l/min
Max. excitation frequency	2 Hz
Duty cycle	100% ED
Hydraulic fluid	DIN 51524 Mineral oils
Fluid viscosity	10 ÷ 500 mm ² /s
Fluid temperature	-25°C ÷ 75°C
Ambient temperature	-25°C ÷ 50°C
Max. contamin. level class with filter	ISO 4406:1999 - class 19/17/14
Type of protection (in relation to the connector used)	IP 65
Weight	0.37 kg
Cartridge tightening torque	45 ÷ 50 Nm
Emergency P1 tightening torque	6 ÷ 9 Nm
Coil ring nut tightening torque	4.5 Nm
Cavity (7/8 - 14 UNF)	CD019006 (See section 17)

SPOOL HYDRAULIC SCHEME

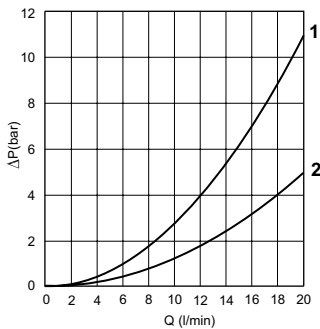


1D

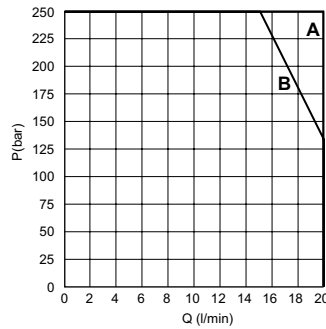


1E

PRESSURE DROPS



LIMIT OF USE



Spool type	Connections (pressure drops)					
	2→1	2→3	1→2	1→3	3→1	3→2
1D	2	1	—	—	—	1
1E	2	—	2	1	1	—

Curve No.

Spool type	Connections (limits of use)					
	2→1	2→3	1→2	1→3	3→1	3→2
1D	A	A	—	—	—	B
1E	A	—	B	B	A	—

Curve No.

The tests were carried out with the solenoids at operating temperature, with a supply voltage 10% below nominal value and with a 40°C fluid temperature.
The fluid used is a mineral oil with viscosity of 46 mm²/s at 40°C.

ORDERING CODE

C3V = Solenoid valve 3 way / 2 positions

03 = 27W Coil (A09)

****** = See "Spool scheme"

E = Seat

H = Hirschmann coil
A = AMP Junior coil (1)
F = Coil with flying leads (250 mm) (1)
I = Coil with flying leads (130 mm) and integrated diode (1)
D = Deutsch coil and integrated diode (1)

1 = Serial No.

00 = No variants
E1 = Rubber emergency

P1 = Rotary emergency button

DC 27W (A09)

L = 12 VDC
M = 24 VDC
N = 48 VDC
P = 110 VDC

Z = 102 VDC RAC (2)
X = 205 VDC RAC (3)
W = Without coil (4)

Connector to be ordered separately, see sect. 20

Coils technical data, see sect. 19

(1) Only voltages 12 VDC - 24 VDC

(2) With rectifier: 115 VAC/50Hz - 120 VAC/60Hz

(3) With rectifier: 230 VAC/50Hz - 240 VAC/60Hz

(4) Performance are guaranteed only using valves completed with BFP coil