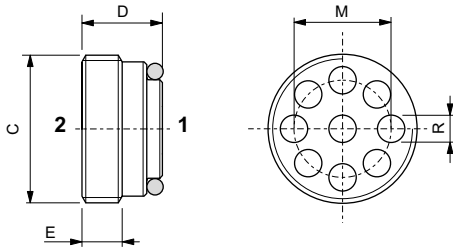


ONE-WAY CHECK VALVES



The unidirectional check valve allows oil to flow in only one direction. The guided half-ball seal is made of tempered and ground steel. The spring allows the valve to be mounted in any position. Steel body.

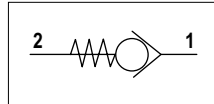
HYDRAULIC FEATURES

Max. Leakage (0 ÷ 5 drops/min)	0 ÷ 0.25 cm ³ /min
Hydraulic fluid	DIN 51524 Mineral oils
Fluid viscosity	10 ÷ 500 mm ² /s
Fluid temperature	-25°C ÷ 75°C
Ambient temperature	-25°C ÷ 60°C
Max. contamin. level class with filter	ISO 4406:1999 - class 19/17/14

4

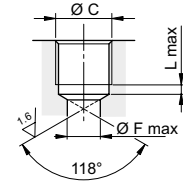
C	Flow max (l/min)	Pressure max (bar)	M (mm)	R (mm)	D (mm)	E (mm)	Tightening torque (Nm)	Weight (kg)
1/4 BSP	20	350	8.5	2.2	8.5	4.4	6	0.005
3/8 BSP	50	350	10.8	3	11.3	6	6	0.011
1/2 BSP	80	350	14.2	3.8	12.7	6.5	10	0.019

HYDRAULIC SYMBOL



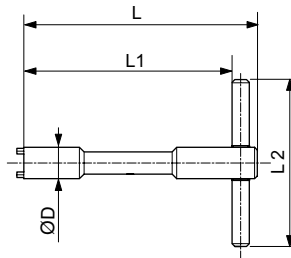
SEAL

C	F (mm)	L (mm)
1/4 BSP	7	3
3/8 BSP	9	3.5
1/2 BSP	12	4.5

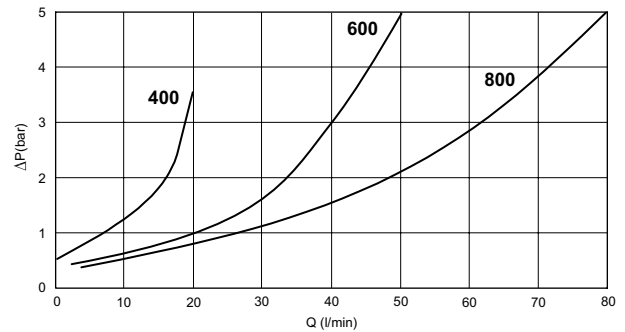


KEY FOR TIGHTENING VALVE

Code key	For valve	D (mm)	L (mm)	L1 (mm)	L2 (mm)
AVA174	VUI0400	11.4	120	105.5	100
AVA176	VUI0600	14.9	120	105.5	100
AVA178	VUI0800	18.6	120	105.5	100



PRESSURE DROPS



Fluid used: mineral based oil with viscosity 32 mm²/s at 40°C.

ORDERING CODE

