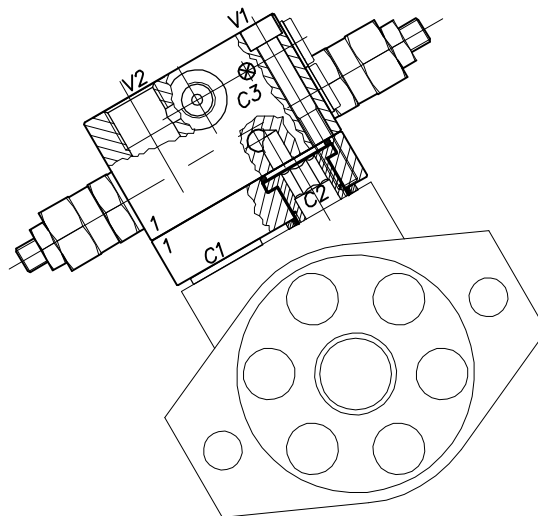
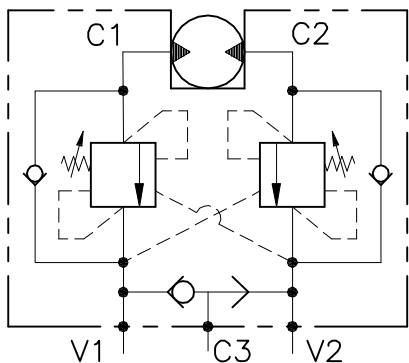


# WB-M-DE-VFF-...-12-14-...

VALVOLA BILANCIAMENTO, BLOCCO E CONTROLLO MOVIMENTO  
A DOPPIO EFFETTO FLANGIATA MOTORE

DOUBLE COUNTERBALANCE MOTOR FLANGEABLE VALVE



## CARATTERISTICHE

Luce nominale	<b>DN 10</b>
Portata min/max	<b>1/60 l/min - 0.26/15.9 GPM</b>
Pressione di lavoro max.	<b>350 bar - 5075 PSI</b>
Pressione max. di taratura	<b>220 bar - 3190 PSI</b>
Rapporto di pilotaggio standard	<b>4.25 : 1</b>
Temperatura ambiente	<b>-30°C + 50°C</b>
Temperatura olio	<b>-30°C + 80°C</b>
Filtraggio consigliato	<b>30 micron</b>
Coppia di serraggio	<b>70÷80 Nm</b>
Peso	

## PERFORMANCE

Rated size
Min/max flow-rate
Max working pressure
Max setting pressure
Standard pilot ratio
Room temperature
Oil temperature
Recommended filtration
Tightening torque
Weight

### NOTE:

La taratura deve essere **1.3** volte maggiore della pressione indotta dal carico.

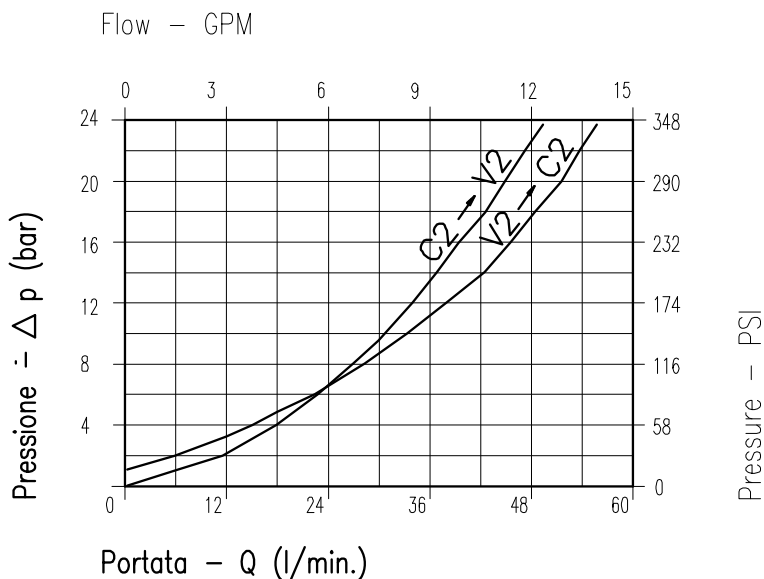
Valve should be set at **1.3** times load induced pressure.

### ESEMPIO/EXAMPLE:

Pressione di lavoro max:

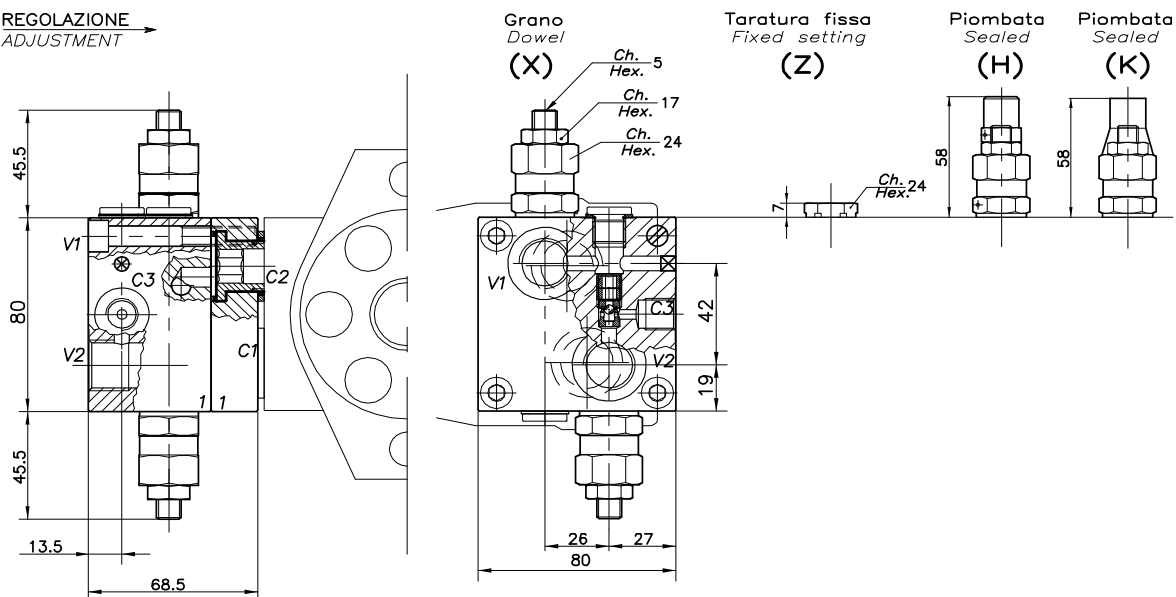
Max working pressure:

**350 bar / 1.3 = 270 bar**



Viscosità olio 46 cSt a 50°C  
Oil viscosity 46 cSt at 50°C

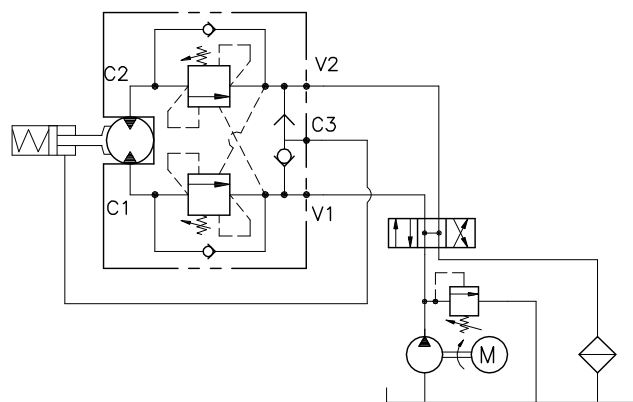
REGOLAZIONE  
ADJUSTMENT →



**DIMENSIONI  
DIMENSIONS**

**ESEMPIO TIPICO DI CIRCUITO  
TYPICAL CIRCUIT EXAMPLE**

Campo taratura Setting range	Attacchi Port size V2-C2 V1-C1 GAS (BSPP)	Attacchi Port size C3 GAS (BSPP)	Tipo motore Motor type
436	1/2"	1/4"	Samhydraulik AG-BG-AR (40x8)
437	1/2"	1/4"	Olidrive (44x17)
438	1/2"	1/4"	Samhydraulik HPR-HPRC Danfoss OMS (32x22)
439	1/2"	1/4"	Danfoss OMR-OMP (36x36)
656	1/2"	1/4"	Char Lynn (45,7) TRW MAC/MAF



**CODICE DI ORDINAZIONE  
HOW TO ORDER**

001 436 0 X 0

Campo taratura / Setting range	
436	
437	
438	
439	
656	
Campo taratura 30÷220 bar (molla colore verde) Setting range 30÷220 bar (green spring)	
Taratura standard (Q=5 l/1')	Incr. press. - bar giro/vite
Std. bar setting (Q=5 l/1')	Pressure rise - turn of screw
220 bar	(56)

Rapporto di pilotaggio Pilot ratios	Regolazione Adjustment
O   4,25 : 1	X   Grano - Dowel
D   8 : 1	Z   Taratura fissa - Fixed setting
	H   Piombata - Sealed
	K   Piombata - Sealed