



AM.2.VM...

CMP.02... BFP CARTRIDGE CATALOGUE

SCREWS AND STUDS CH. IV PAGE 6

ORDERING CODE

AM

Modular valve

2

CETOP 2/NG4

VM

Max. pressure valves

**

Adjustment on the lines
A / B / P / AB

C

Type of adjustment
grub screw

*

Setting ranges at port A/B/P

1 = max.30 bar (white spring)

2 = max.90 bar (yellow spring)

3 = max.180 bar (green spring)

4 = max.250 bar (orange spring)

*

Setting ranges at port B

(Omit if the setting is same
as that at port A)

1 = max.30 bar (white spring)

2 = max.90 bar (yellow spring)

3 = max.180 bar (green spring)

4 = max.250 bar (orange spring)

**

00 = No variant

V1 = Viton

1

Serial No.

AM.2.VM... MODULAR MAXIMUM PRESSURE VALVES CETOP 2

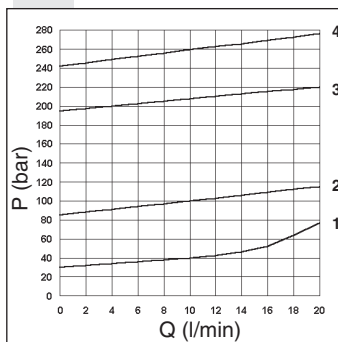


AM.2.VM type pressure regulating valves are available with an operating pressure range of 4 to 250 bar.

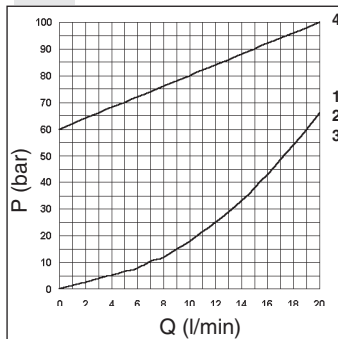
Adjustment is via a grub screw. Two base versions are available: **AM.2.VM...** single on A or B, and double on A and B lines, with drainage on T; **AM.3.VM.P...** single on P line, with drainage on T. 4 different types of springs can be mounted on all versions, with the adjustment range specified in the specifications. The cartridge used is the CMP.02 type.

Max. operating pressure	250 bar
Setting ranges:	
spring 1	30 bar
spring 2	90 bar
spring 3	180 bar
spring 4	250 bar
Max. flow	20 l/min
Hydraulic fluids	Mineral oils DIN 51524
Fluid viscosity	10 ÷ 500 mm ² /s at 50°C
Fluid temperature	-20°C ÷ 75°C
Max. contamination level	class 10 in accordance with NAS 1638 with filter $\beta_{25} \geq 75$
Weight AM.2.VM.A/B/P...	0,53 Kg
Weight AM.2.VM.AB...	0,7 Kg

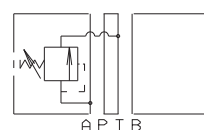
PRESSURE - FLOW RATE



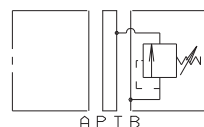
MINIMUM SETTING PRESSURE



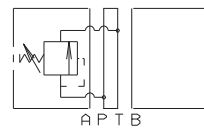
HYDRAULIC SYMBOLS



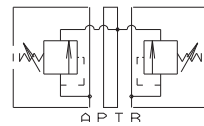
AM.2.VM.A



AM.2.VM.B



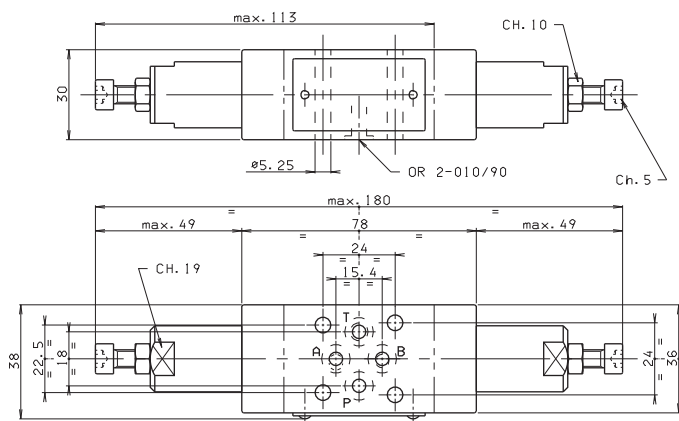
AM.2.VM.P



AM.2.VM.AB

OVERALL DIMENSIONS

AM.2.VM.AB...



AM.2.VM.A/B/P...

