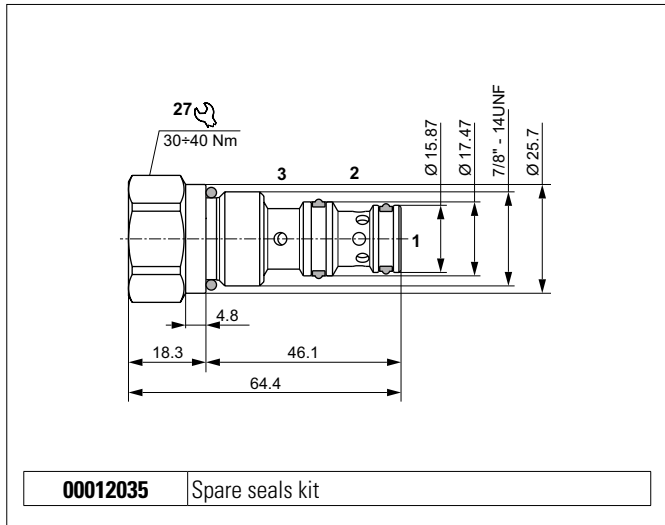


PRESSURE COMPENSATOR VALVE



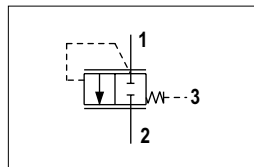
Pressure compensator valves allow to control flow and pressure. The valve is normally closed and with external pilot additive to the spring bias pressure. When the pressure at port 1 rises above the spring bias pressure with the addition of external pilot pressure, then the valve shifts to allow flow from port 1 to port 2 connected to tank. The valve is used as a bypass for a fixed displacement pump in Load Sensing circuits or to proportionally control the speed of an actuator (see examples).

The valve body is made of steel zinc coated and the pressure compensating spool is made of steel tempered and grinded.

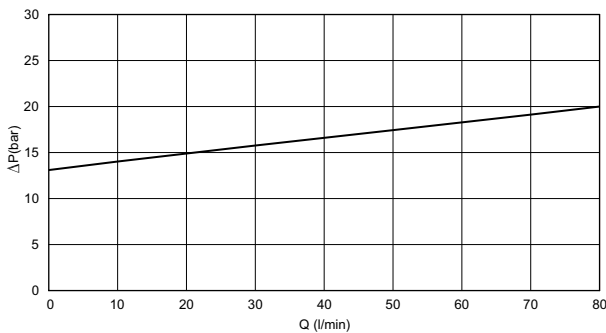
HYDRAULIC FEATURES

| | |
|--|--------------------------------|
| Max. working pressure | 250 bar |
| ΔP of regulation | 8 bar |
| Input max. Flow | 50 l/min |
| Hydraulic fluid | DIN 51524 Mineral oils |
| Fluid viscosity | 10 ÷ 500 mm ² /s |
| Fluid temperature | -25°C ÷ 75°C |
| Ambient temperature | -25°C ÷ 60°C |
| Max. contamin. level class with filter | ISO 4406:1999 - class 19/17/14 |
| Weight | 0.2 kg |
| Tightening torque | 30 ÷ 40 Nm |
| Cavity (7/8" - 14 UNF) | CD019006 (See section 17) |

HYDRAULIC SYMBOL

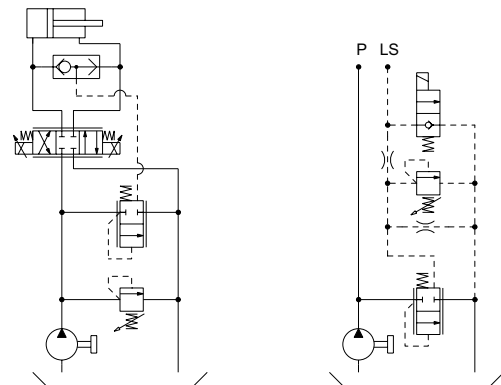


PRESSURE DROPS (1 → 2)



Fluid used: mineral based oil with viscosity 46 mm²/s at 40°C.

SERVICE EXAMPLE



ORDERING CODE

