

CMP.10... DIRECT OPERATION MAXIMUM PRESSURE VALVES



CMP.10...

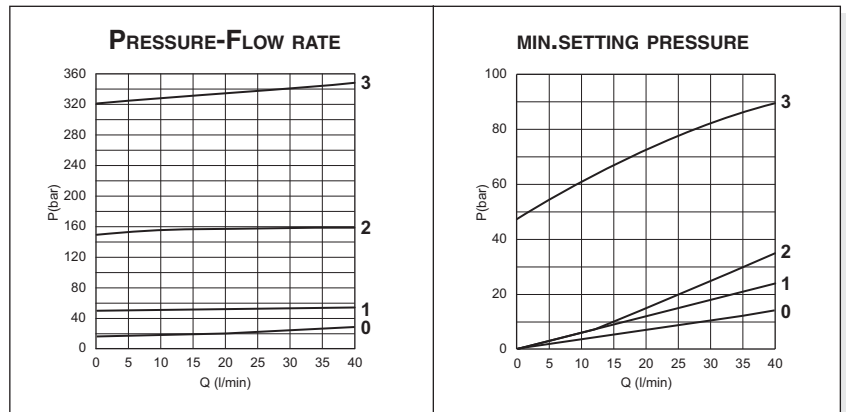
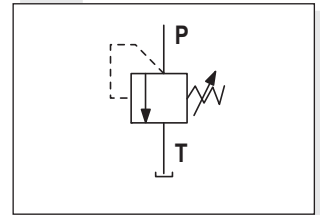
The direct acting relief valve limits the pressure in a hydraulic circuit. It raises the safety level by making it impossible for the plant operators to set a higher pressure rating, than that specified in the catalogue. This is limited by a pack spring with a mechanical stop, which prevents temporary P closures caused by pressure peaks. It has a galvanised steel body. The guided ball poppet is in tempered and ground steel.

Max. operating pressure	320 bar	
Setting ranges:	Spring 0	max. 15 bar
	Spring 1	max. 50 bar
	Spring 2	max. 150 bar
	Spring 3	max. 320 bar
Max. flow	40 l/min	
Hydraulic fluids	Mineral oils DIN 51524	
Fluid viscosity	10 ÷ 500 mm ² /s	
Fluid temperature	-25°C ÷ 75°C	
Ambient temperature	-25°C ÷ 60°C	
Max. contamination level	class 10 in accordance with NAS 1638 with filter $\beta_{25} \geq 75$	
Weight	0,2 Kg	
Tightening torque	60 ÷ 70 Nm (6 ÷ 7 Kgm)	
• The minimum permissible setting pressure depending on the screw: see curves below		

ORDERING CODE

CMP	Max. pressure cartridge
10	Size (M24 x 2)
*	Type of adjustment M = Plastic knob C = Grub screw V = Handwheel
*	Setting ranges 0 = max. 15 bar (orange spring) 1 = max. 50 bar (white spring) 2 = max. 150 bar (yellow spring) 3 = max. 320 bar (green spring)
**	00 = No variant V1 = Viton
2	Serial No.

HYDRAULIC SYMBOL



0 = CMP10.0.. - 1 = CMP10.1.. - 2 = CMP10.2.. - 3 = CMP10.3..
Fluid used: mineral based oil with viscosity 32 mm²/s at 40°C.

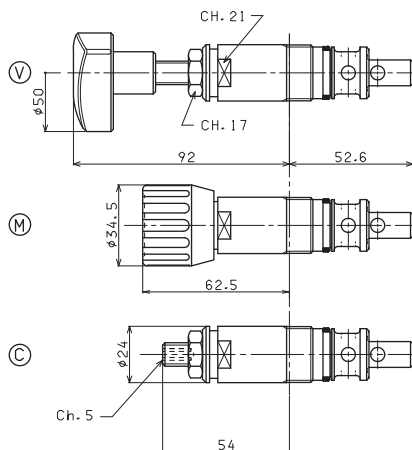
OVERALL DIMENSIONS

Type of adjustment

M Plastic knob

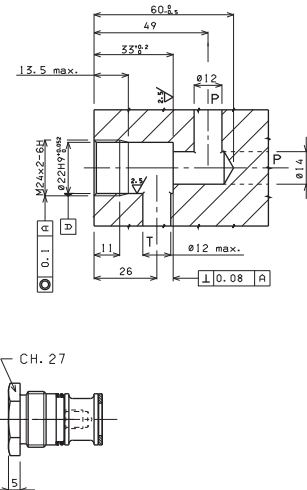
C Grub screw

V Handwheel



00012008 Spare seals kit

SEAT DIMENSIONS



Valve seat plug code R78.30.0564