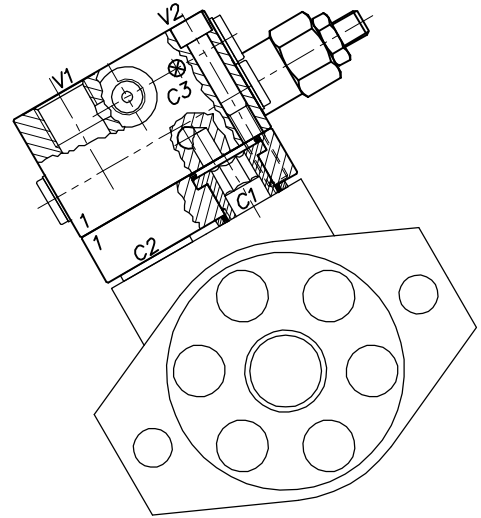
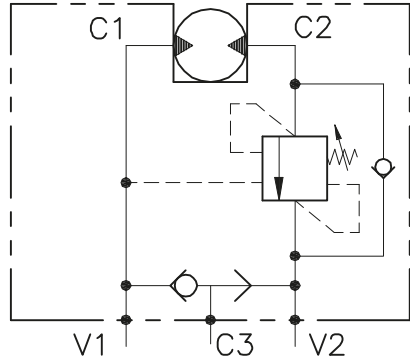


WB-M-SE-VFF-...-12-14-...

VALVOLA BILANCIAMENTO, BLOCCO E CONTROLLO MOVIMENTO
A SEMPLICE EFFETTO FLANGIATA MOTORE

SINGLE COUNTERBALANCE MOTOR FLANGEABLE VALVE



CARATTERISTICHE

Luce nominale	DN 12
Portata min/max	1/60 l/min - 0.26/15.9 GPM
Pressione max. di picco	350 bar - 5075 PSI
Pressione max. di taratura	350 bar - 5075 PSI
Rapporto di pilotaggio standard	4.25 : 1
Temperatura ambiente	-30°C + 50°C
Temperatura olio	-30°C + 80°C
Filtraggio consigliato	30 micron
Coppia di serraggio	110÷115 Nm
Peso	

PERFORMANCE

Rated size
Min/max flow-rate
Max peak pressure
Max setting pressure
Standard pilot ratio
Room temperature
Oil temperature
Recommended filtration
Tightening torque
Weight

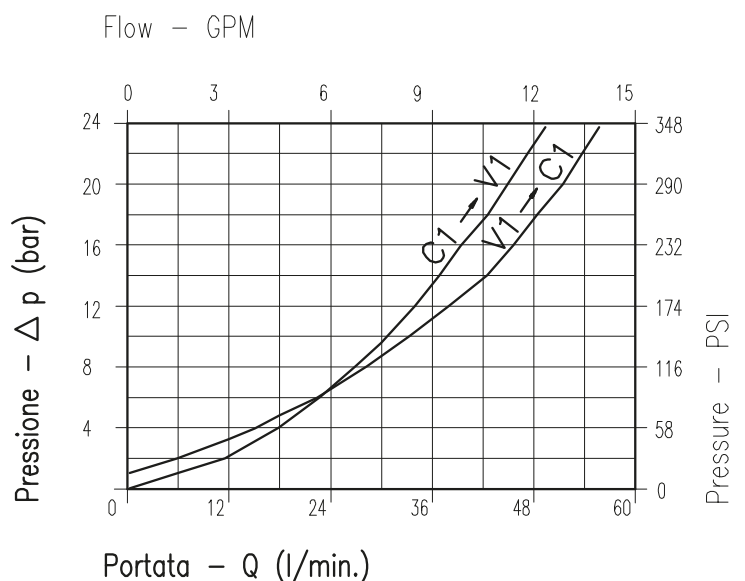
NOTE:

La taratura deve essere **1.3** volte maggiore della pressione indotta dal carico.

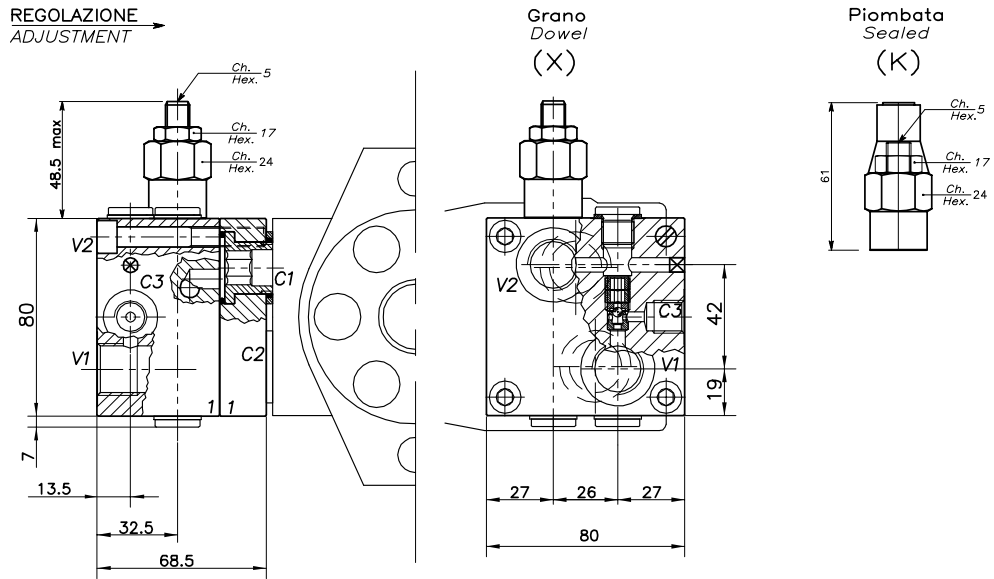
Valve should be set at **1.3** times load induced pressure.

ESEMPIO/EXAMPLE:

Pressione di lavoro max:
Max working pressure:
350 bar / 1.3 = 270 bar



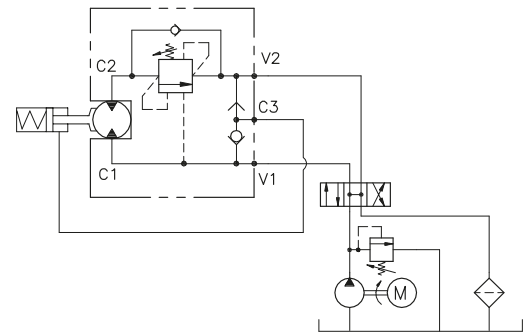
Viscosità olio 46 cSt a 50°C
Oil viscosity 46 cSt at 50°C



**DIMENSIONI
DIMENSIONS**

**ESEMPIO TIPICO DI CIRCUITO
TYPICAL CIRCUIT EXAMPLE**

Campo taratura Setting range		Attacchi Port size V2-C2 V1-C1 GAS (BSPP)	Attacchi Port size C3 GAS (BSPP)	Tipo motore Motor type
533	126	1/2"	1/4"	Samhydraulik HPR-HPRC Danfoss OMS (32x2)
534		1/2"	1/4"	Olidrive (32x22)
535		1/2"	1/4"	Danfoss OMR-OMP (36x36)
545		1/2"	1/4"	TRW MAC/MAF (45,7)
618	668	1/2"	1/4"	Samhydraulik AG-BG-AR (40x8)



**CODICE DI ORDINAZIONE
HOW TO ORDER**

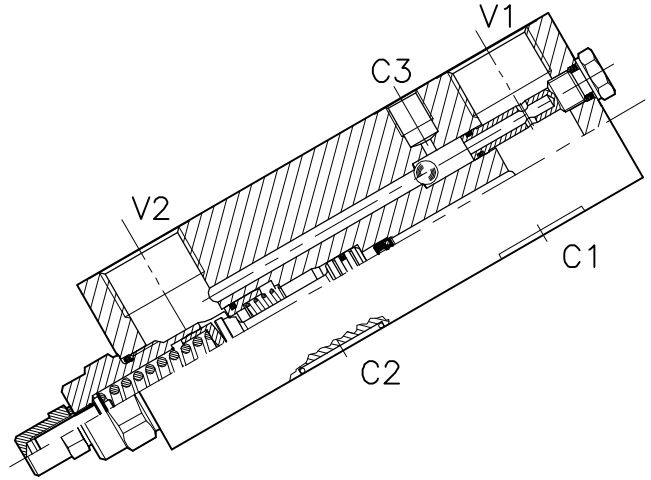
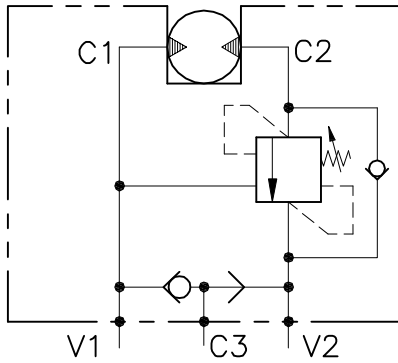
N01 . 533 . 0 X 0 . A

Campo taratura / Setting range		Rapporto di pilotaggio Pilot ratios	Regolazione Adjustment	Collettore Body
533	126	O 4.25 : 1	X Grano - Dowel	A Acciaio zincato Zinc plated steel
534		D 8 : 1	K Piombata - Sealed	
535				
545				
618	668			
Campo taratura 30÷220 bar (molla colore verde) Setting range 30÷220 bar (green spring)		Campo taratura 60÷350 bar (molla colore giallo) Setting range 60÷350 bar (yellow spring)		
Taratura standard (Q=5 l/1')	Incr. press. - bar giro/vite			
Std. bar setting (Q=5 l/1')	Pressure rise - turn of screw			
180 bar	(50)			
Taratura standard (Q=5 l/1')	Incr. press. - bar giro/vite			
Std. bar setting (Q=5 l/1')	Pressure rise - turn of screw			
250 bar	(90)			

OWC-SE-VFF-...-14-FMV2-...

VALVOLA BILANCIAMENTO, BLOCCO E CONTROLLO MOVIMENTO
A SEMPLICE EFFETTO FLANGIATA MOTORE

SINGLE COUNTERBALANCE MOTOR FLANGEABLE VALVE



CARATTERISTICHE

Luca nominale	DN 15
Portata min/max	1/180 l/min - 0.26/47 GPM
Pressione max. di picco	350 bar - 5075 PSI
Pressione max. di taratura	350 bar - 5075 PSI
Rapporto di pilotaggio standard	6.2 : 1
Temperatura ambiente	-30°C + 50°C
Temperatura olio	-30°C + 80°C
Filtraggio consigliato	30 micron
Coppia di serraggio	
Peso	

PERFORMANCE

Rated size
Min/max flow-rate
Max peak pressure
Max setting pressure
Standard pilot ratio
Room temperature
Oil temperature
Recommended filtration
Tightening torque
Weight

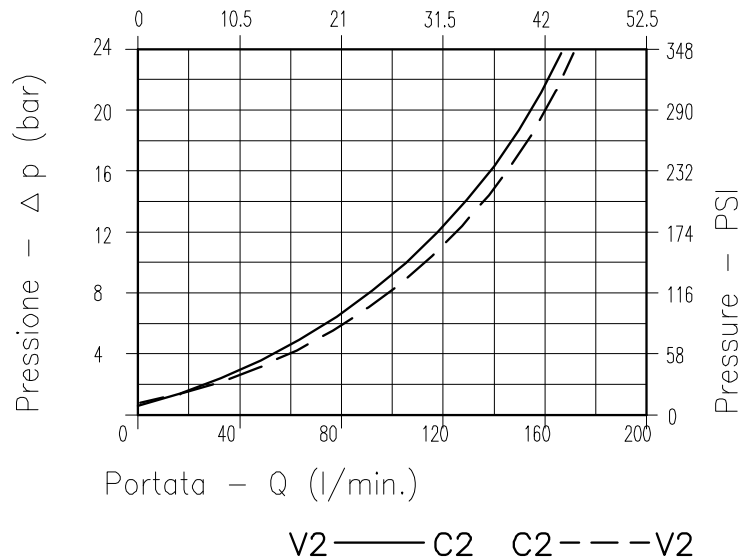
NOTE:

La taratura deve essere **1.3** volte maggiore della pressione indotta dal carico.

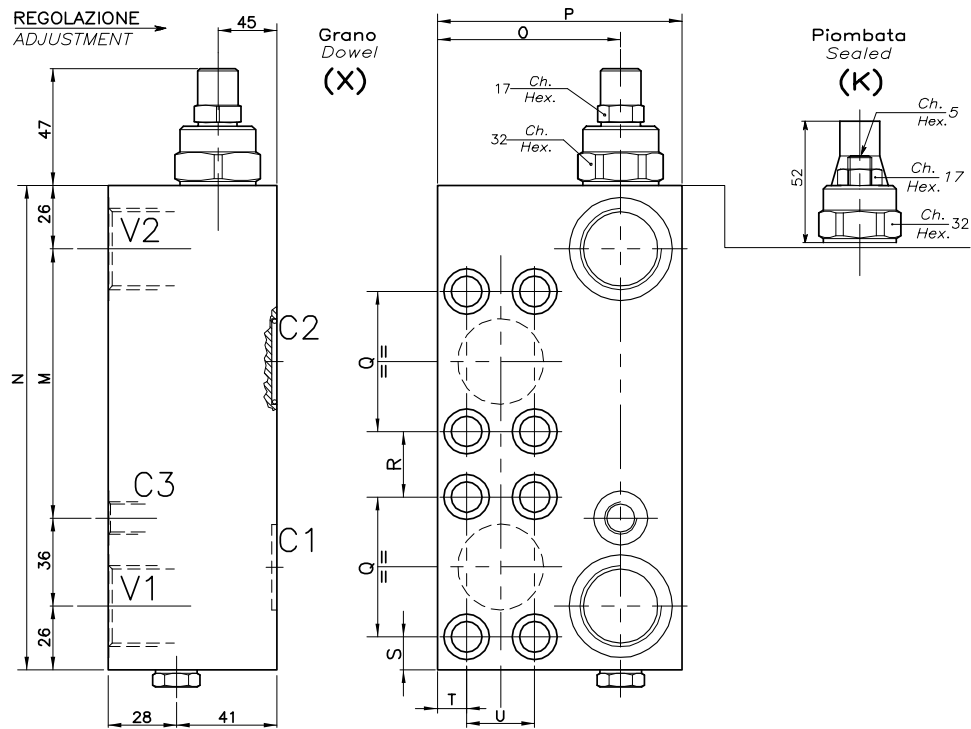
Valve should be set at **1.3** times load induced pressure.

ESEMPIO/EXAMPLE:

Pressione di lavoro max:
Max working pressure:
350 bar / 1.3 = 270 bar



Viscosità olio 46 cSt a 50°C
Oil viscosity 46 cSt at 50°C



**DIMENSIONI
DIMENSIONS**

Campo taratura Setting range	M	N	O	P	Q	R	S	T	U	Attacchi Port size C1-C2	Attacchi Port size V1-V2 GAS (BSPP)	Attacchi Port size C3 GAS (BSPP)	Tipo Motore Motor type
564	110	198	75	100	57.2	26.8	13.4	12	27.8	Ø 15	1"	1/4"	H1CR 90-108 HMT (84)
565	95	183	65	90	50.8	24.2	11	13	23.8	Ø 15	3/4"	1/4"	H1CR 45-55-75 HMT (75)
566	67	155	55	80	40.6	18.4	9	9	18.2	Ø 15	1/2"	1/4"	H1CR 20-30 HMT (59)

**CODICE DI ORDINAZIONE
HOW TO ORDER**

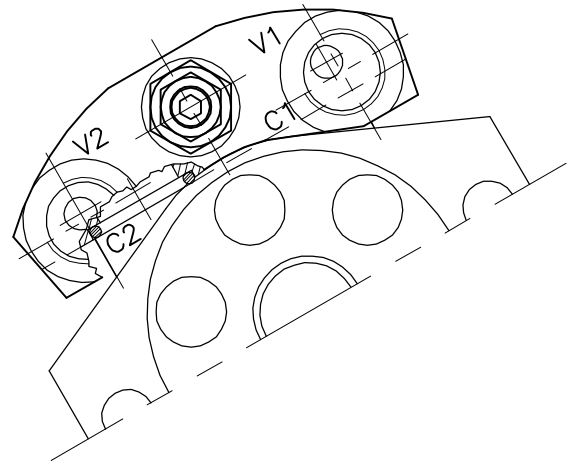
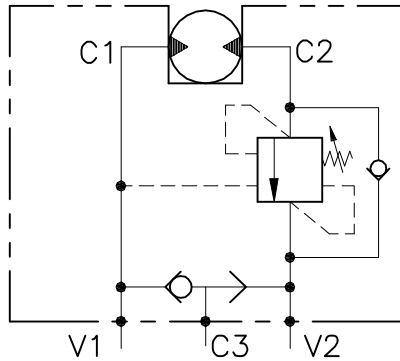
001 . 564 . 0 X 0 . A

Campo taratura / Setting range		Rapporto di pilotaggio Pilot ratios		Regolazione Adjustment		Collettore Body	
564		O 6.2 : 1		X Grano - Dowel		A Acciaio zincato Zinc plated steel	
565		G 4.1 : 1		K Piombata - Sealed			
566							
Campo taratura 60÷350 bar (molla colore giallo) Setting range 60÷350 bar (yellow spring)							
Taratura standard (Q=5 l/1') Std. bar setting Q=5 l/1')		Incr. press. - bar giro/vite Pressure rise - turn of screw					
250 bar		(125)					

OWC-SE-12-FMD-G-...

VALVOLA BILANCIAMENTO, BLOCCO E CONTROLLO MOVIMENTO
A SEMPLICE EFFETTO FLANGIATA MOTORE

SINGLE COUNTERBALANCE MOTOR FLANGEABLE VALVE



CARATTERISTICHE

Luce nominale	DN 10
Portata min/max	1/60 l/min - 0.26/15.9 GPM
Pressione max. di picco	350 bar - 5075 PSI
Pressione max. di taratura	220 bar - 3190 PSI
Rapporto di pilotaggio standard	4.25 : 1
Temperatura ambiente	-30°C + 50°C
Temperatura olio	-30°C + 80°C
Filtraggio consigliato	30 micron
Coppia di serraggio	
Peso	

PERFORMANCE

Rated size
Min/max flow-rate
Max peak pressure
Max setting pressure
Standard pilot ratio
Room temperature
Oil temperature
Recommended filtration
Tightening torque
Weight

NOTE:

La taratura deve essere **1.3** volte maggiore della pressione indotta dal carico.

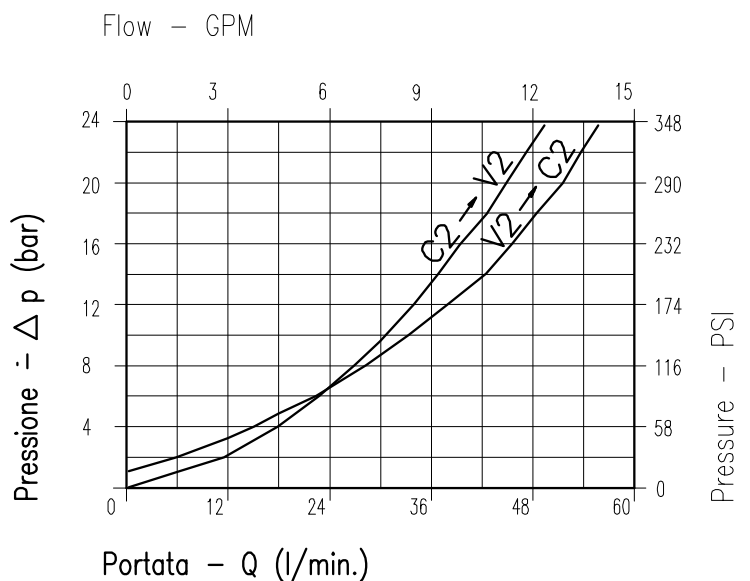
Valve should be set at **1.3** times load induced pressure.

ESEMPIO/EXAMPLE:

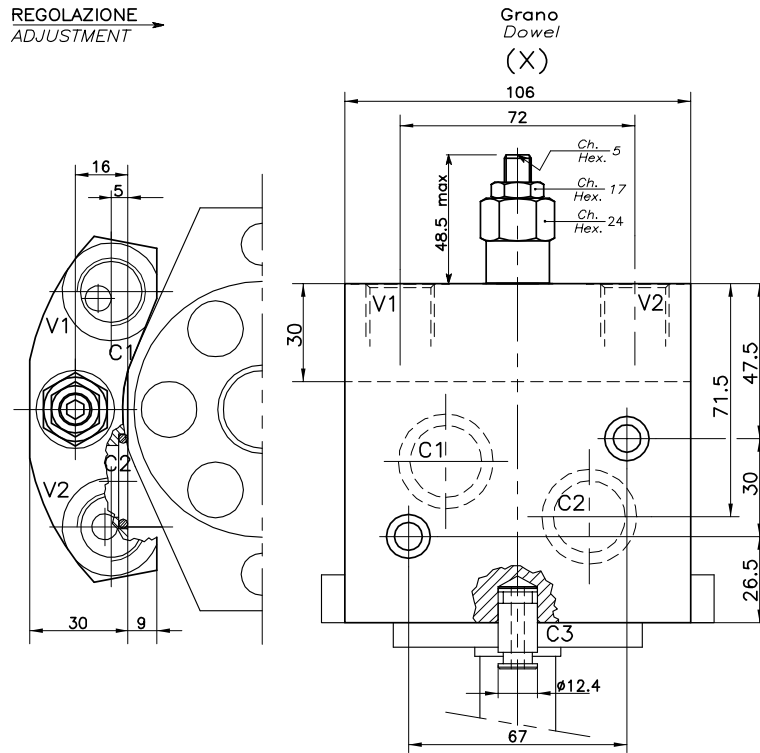
Pressione di lavoro max:

Max working pressure:

350 bar / 1.3 = 270 bar



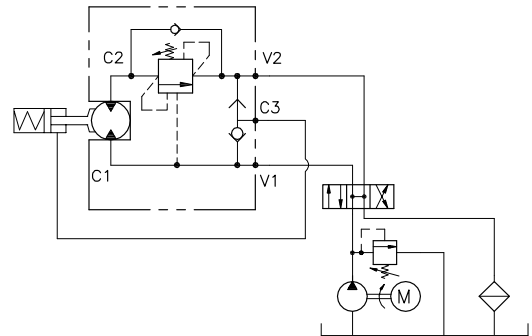
Viscosità olio 46 cSt a 50°C
Oil viscosity 46 cSt at 50°C



**DIMENSIONI
DIMENSIONS**

Campo taratura Setting range	Attacchi Port size V1-C1 GAS (BSPP)	Attacchi Port size C3 GAS (BSPP)	Tipo motore Motor type Oildrive (44x17)	Portata max Max flow-rate l/min - GPM
202	1/2"	Ø12	Oildrive (44x17)	60-15

**ESEMPIO TIPICO DI CIRCUITO
TYPICAL CIRCUIT EXAMPLE**



**CODICE DI ORDINAZIONE
HOW TO ORDER**

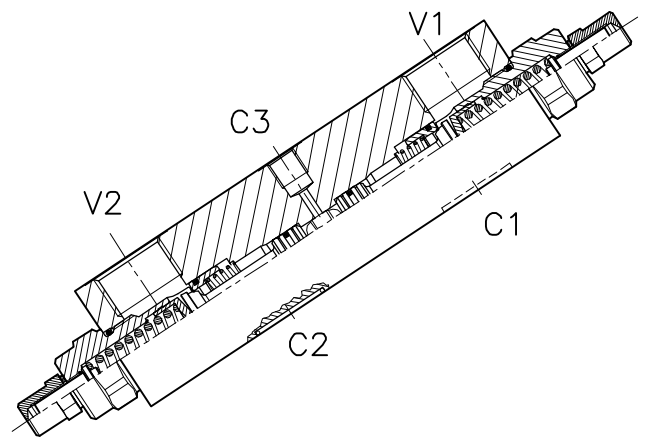
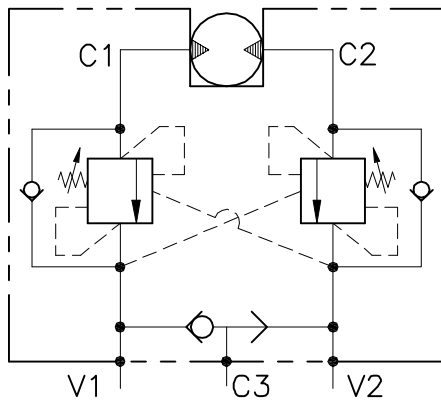
N01 . 202 . 0 X 0

<p>Campo taratura / Setting range</p> <p style="font-size: 1.5em;">202</p> <p>Campo taratura 30÷220 bar (molla colore verde) Setting range 30÷22 0 bar (green spring)</p> <p>Taratura standard (Q=5 l/1') Std. bar setting (Q=5 l/1') 180 bar</p>	<p>Rapporto di pilotaggio Pilot ratios</p> <p>O 4.25 : 1</p> <p>Regolazione Adjustment</p> <p>X Grano - Dowel</p>
<p>Incr. press. - bar giro/vite Pressure rise - turn of screw (50)</p>	

OWC-DE-VFF-...-14-FMV2-...

VALVOLA BILANCIAMENTO, BLOCCO E CONTROLLO MOVIMENTO
A DOPPIO EFFETTO FLANGIATA MOTORE

SINGLE COUNTERBALANCE MOTOR FLANGEABLE VALVE



CARATTERISTICHE

Luce nominale

Portata min/max

Pressione max. di picco

Pressione max. di taratura

Rapporto di pilotaggio standard

Temperatura ambiente

Temperatura olio

Filtraggio consigliato

Coppia di serraggio

Peso

DN 15

1/180 l/min - 0.26/47 GPM

350 bar - 5075 PSI

350 bar - 5075 PSI

6.2 : 1

-30°C + 50°C

-30°C + 80°C

30 micron

PERFORMANCE

Rated size

Min/max flow-rate

Max peak pressure

Max setting pressure

Standard pilot ratio

Room temperature

Oil temperature

Recommended filtration

Tightening torque

Weight

NOTE:

La taratura deve essere **1.3** volte maggiore della pressione indotta dal carico.

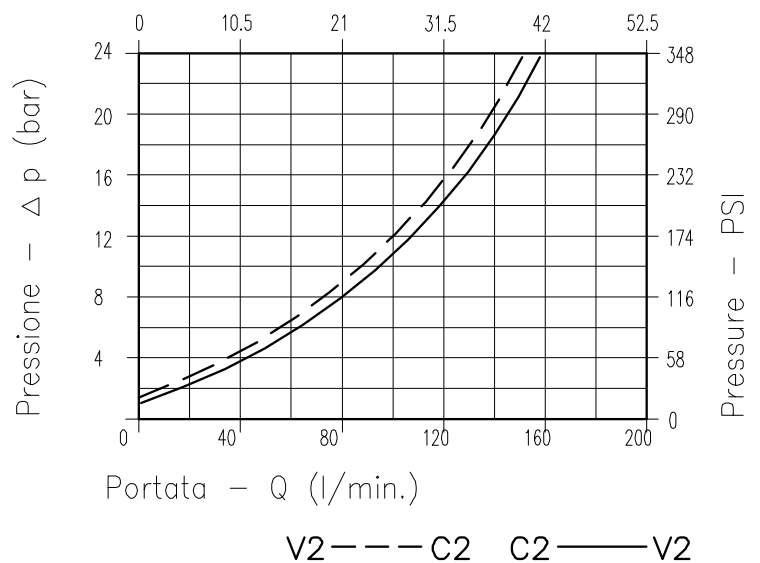
Valve should be set at **1.3** times load induced pressure.

ESEMPIO/EXAMPLE:

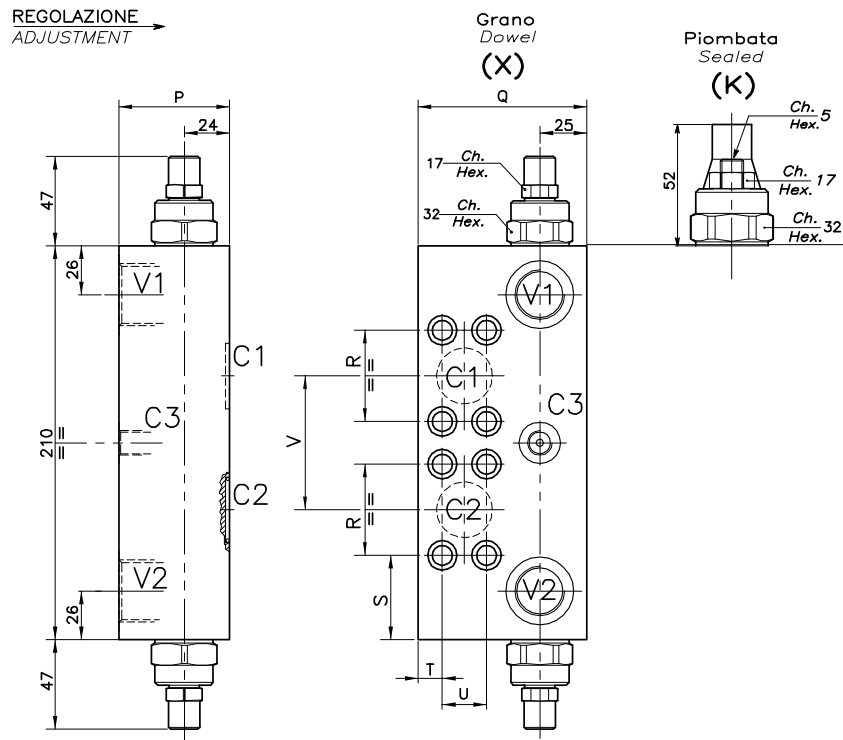
Pressione di lavoro max:

Max working pressure:

350 bar / 1.3 = 270 bar



Viscosità olio 46 cSt a 50°C
Oil viscosity 46 cSt at 50°C



**DIMENSIONI
DIMENSIONS**

Campo taratura Setting range	P	Q	R	S	T	U	V	Attacchi	Attacchi	Attacchi	Tipo Motore Motor type	Portata max Max flow-rate l/min - GPM
								Port size C1-C2	Port size V1-V2 GAS (BSPP)	Port size C3 GAS (BSPP)		
094	69	100	57.2	34.4	12	27.8	84	Ø 15	1"	1/4"	H1CR 90-108 HMT (84)	180-47
101	59	90	50.8	42.1	13	23.8	75	Ø 15	3/4"	1/4"	H1CR 45-55-75 HMT (75)	120-31
095	59	80	55.2	55.2	16.8	18.2	59	Ø 15	1/2"	1/4"	H1CR 20-30 HMT (59)	70-18

**CODICE DI ORDINAZIONE
HOW TO ORDER**

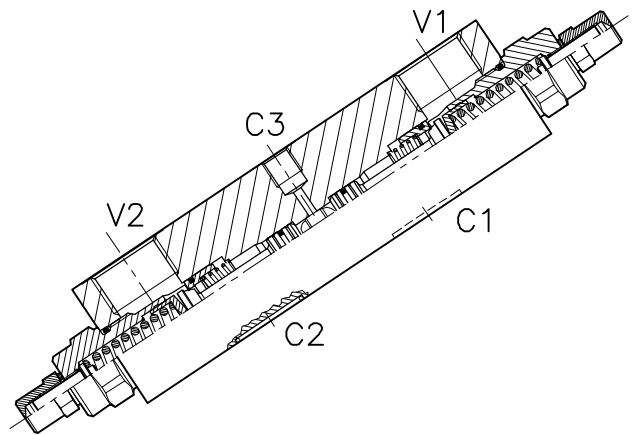
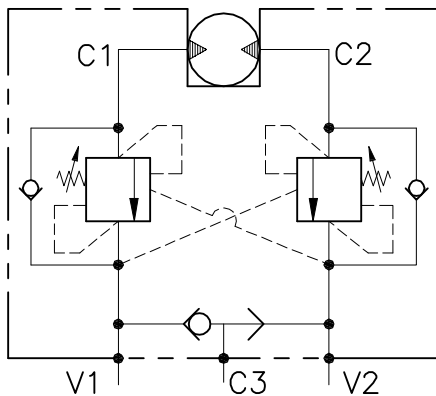
001 . 094 . 0 X 0 . A

Campo taratura / Setting range		Rapporto di pilotaggio Pilot ratios	Regolazione Adjustment	Collettore Body
094		O 6.2 : 1	X Grano - Dowel	A Acciaio zincato Zinc plated steel
101		G 4.1 : 1	K Piombata - Sealed	
095				
Campo taratura 60÷350 bar (molla colore giallo) Setting range 60÷350 bar (yellow spring)				
Taratura standard (Q=5 l/1') Std. bar setting Q=5 l/1')	Incr. press. - bar giro/vite Pressure rise - turn of screw			
250 bar	(125)			

OWC-DE-VFF-...-14-FHV2-...

VALVOLA BILANCIAMENTO, BLOCCO E CONTROLLO MOVIMENTO
A DOPPIO EFFETTO FLANGIATA MOTORE

SINGLE COUNTERBALANCE MOTOR FLANGEABLE VALVE



CARATTERISTICHE

Luce nominale	DN 15
Portata min/max	10/180 l/min - 2.5/47 GPM
Pressione max. di picco	350 bar - 5075 PSI
Pressione max. di taratura	350 bar - 5075 PSI
Rapporto di pilotaggio standard	6.2 : 1
Temperatura ambiente	-30°C + 50°C
Temperatura olio	-30°C + 80°C
Filtraggio consigliato	30 micron
Coppia di serraggio	
Peso	

PERFORMANCE

Rated size
Min/max flow-rate
Max peak pressure
Max setting pressure
Standard pilot ratio
Room temperature
Oil temperature
Recommended filtration
Tightening torque
Weight

NOTE:

La taratura deve essere **1.3** volte maggiore della pressione indotta dal carico.

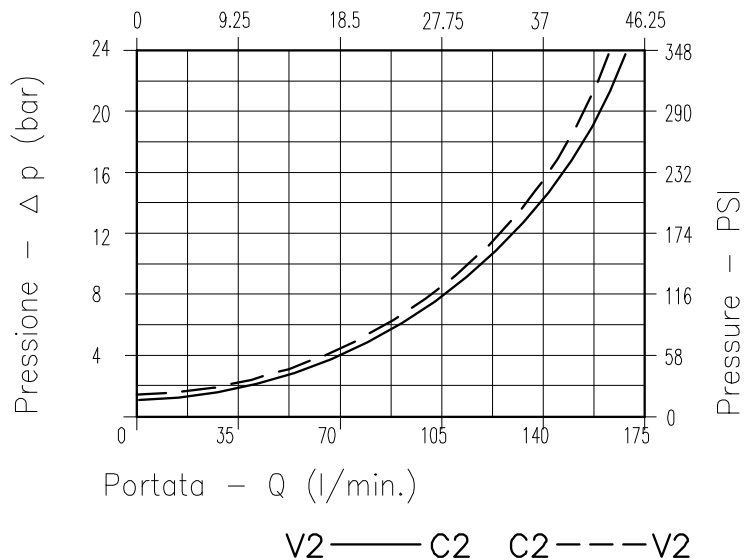
Valve should be set at **1.3** times load induced pressure.

ESEMPIO/EXAMPLE:

Pressione di lavoro max:

Max working pressure:

350 bar / 1.3 = 270 bar

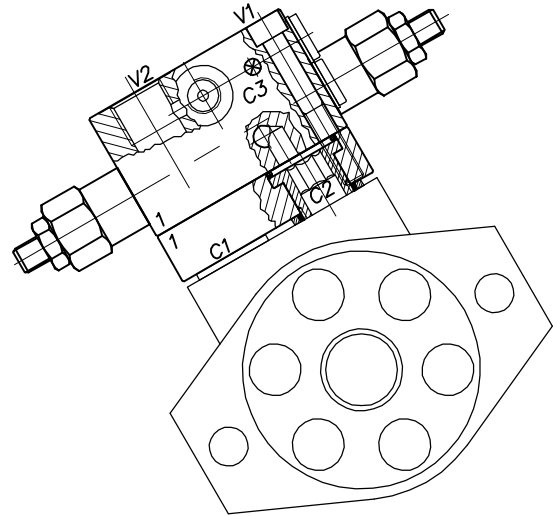
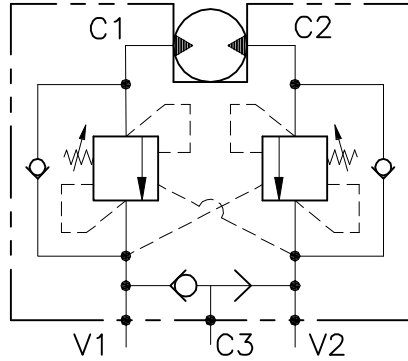


Viscosità olio 46 cSt a 50°C
Oil viscosity 46 cSt at 50°C

WB-M-DE-VFF-...-12-14-...

VALVOLA BILANCIAMENTO, BLOCCO E CONTROLLO MOVIMENTO
A DOPPIO EFFETTO FLANGIATA MOTORE

DOUBLE COUNTERBALANCE MOTOR FLANGEABLE VALVE



CARATTERISTICHE

Luce nominale	DN 10
Portata min/max	1/60 l/min - 0.26/15.9 GPM
Pressione max. di picco	350 bar - 5075 PSI
Pressione max. di taratura	220 bar - 3190 PSI
Rapporto di pilotaggio standard	4.25 : 1
Temperatura ambiente	-30°C + 50°C
Temperatura olio	-30°C + 80°C
Filtraggio consigliato	30 micron
Coppia di serraggio	70÷80 Nm
Peso	

PERFORMANCE

Rated size
Min/max flow-rate
Max peak pressure
Max setting pressure
Standard pilot ratio
Room temperature
Oil temperature
Recommended filtration
Tightening torque
Weight

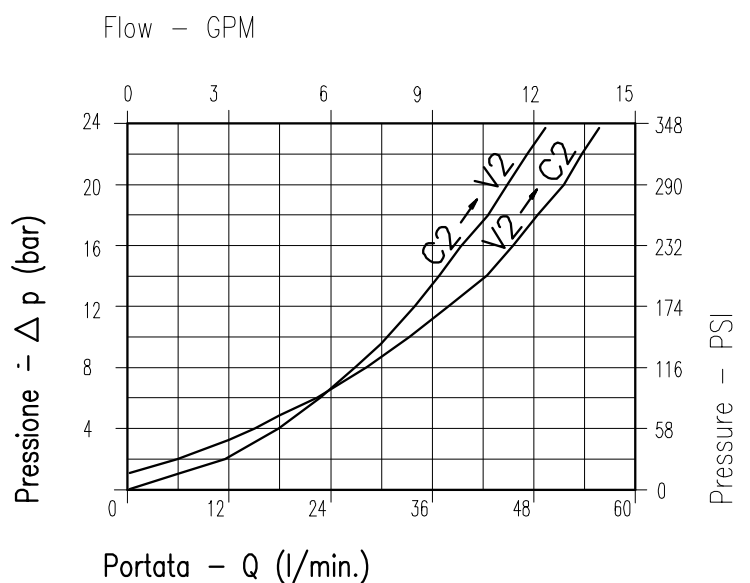
NOTE:

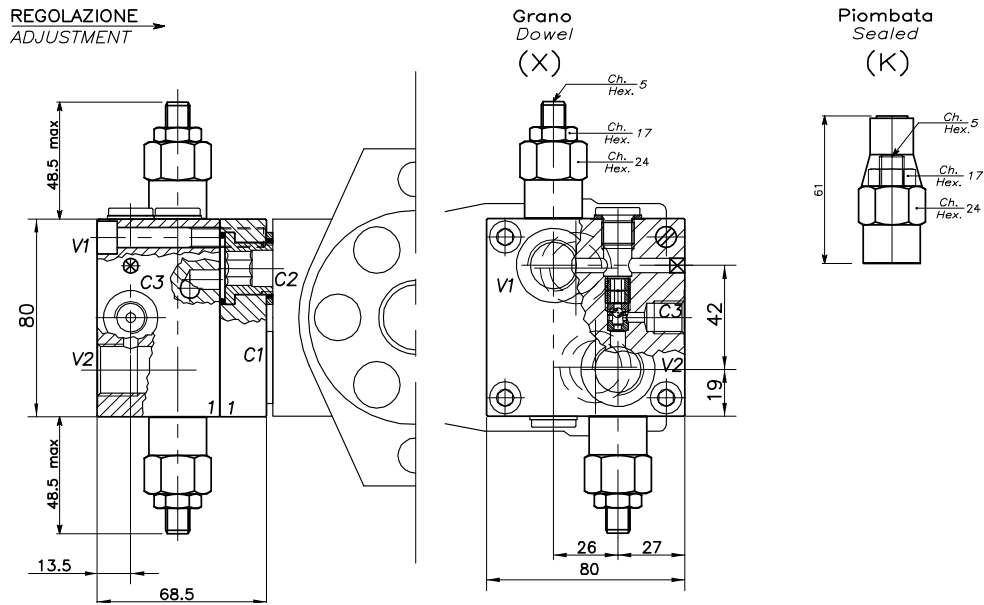
La taratura deve essere **1.3** volte maggiore della pressione indotta dal carico.

Valve should be set at **1.3** times load induced pressure.

ESEMPIO/EXAMPLE:

Pressione di lavoro max:
Max working pressure:
350 bar / 1.3 = 270 bar

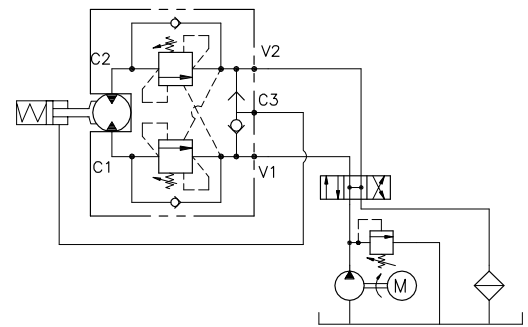




**DIMENSIONI
DIMENSIONS**

**ESEMPIO TIPICO DI CIRCUITO
TYPICAL CIRCUIT EXAMPLE**

Campo taratura Setting range	Attacchi Port size V2-C2 V1-C1 GAS (BSPP)	Attacchi Port size C3 GAS (BSPP)	Tipo motore Motor type
436	1/2"	1/4"	Samhydraulik AG-BG-AR (40x8)
437	1/2"	1/4"	Olidrive (44x17)
438	1/2"	1/4"	Samhydraulik HPR-HPRC Danfoss OMS (32x22)
439	1/2"	1/4"	Danfoss OMR-OMP (36x36)
656	1/2"	1/4"	Char Lynn (45,7) TRW MAC/MAF



**CODICE DI ORDINAZIONE
HOW TO ORDER**

N01 . 436 . 0 X 0 . A

Campo taratura / Setting range
436
437
438
439
656

Rapporto di pilotaggio Pilot ratios
O 4.25 : 1
D 8 : 1

Regolazione Adjustment
X Grano - Dowel
K Piombata - Sealed

Collettore Body
A Acciaio zincato Zinc plated steel

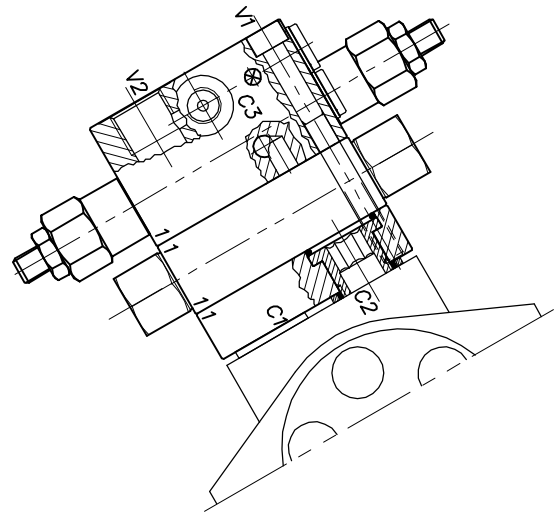
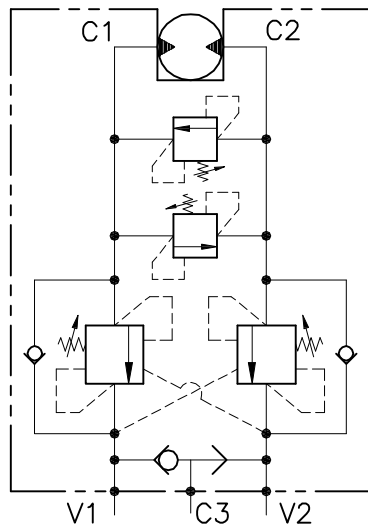
Campo taratura 30÷220 bar (molla colore verde) Setting range 30÷220 bar (green spring)	
Taratura standard (Q=5 l/1')	Incr. press. - bar giro/vite
Std. bar setting (Q=5 l/1')	Pressure rise - turn of screw
180 bar	(50)

436	Collettore possibile in AL togliendo "A" Available aluminium body without "A"
437	
438	
439	
656	

WB-M-DE-VFF-...-12-14-...

VALVOLA BILANCIAMENTO, BLOCCO E CONTROLLO MOVIMENTO A DOPPIO EFFETTO FLANGIATA MOTORE CON VALVOLE DI MASSIMA

DOUBLE COUNTERBALANCE MOTOR FLANGEABLE VALVE



CARATTERISTICHE

Luce nominale	DN 10
Portata min/max	1/60 l/min - 0.26/15.9 GPM
Pressione max. di picco	350 bar - 5075 PSI
Pressione max. di taratura	220 bar - 3190 PSI
Rapporto di pilotaggio standard	4.25 : 1
Temperatura ambiente	-30°C + 50°C
Temperatura olio	-30°C + 80°C
Filtraggio consigliato	30 micron
Coppia di serraggio	110÷115 Nm
Peso	

PERFORMANCE

Rated size
Min/max flow-rate
Max peak pressure
Max setting pressure
Standard pilot ratio
Room temperature
Oil temperature
Recommended filtration
Tightening torque
Weight

NOTE:

La taratura deve essere **1.3** volte maggiore della pressione indotta dal carico.

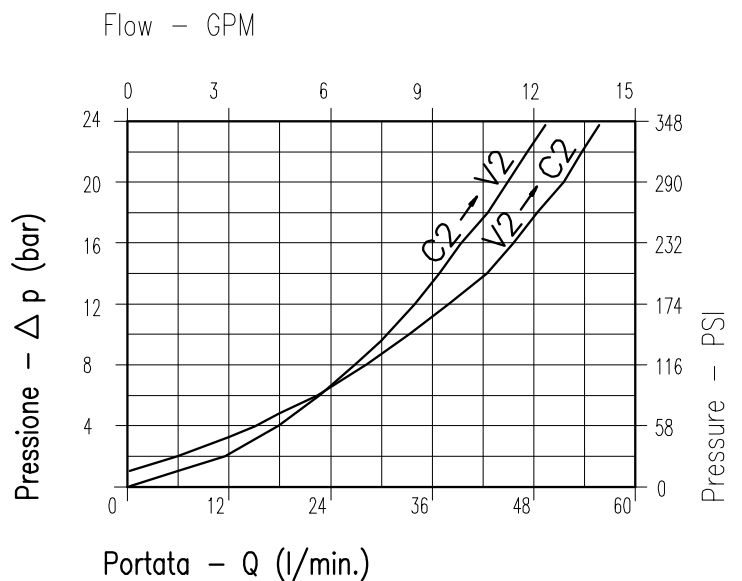
Valve should be set at **1.3** times load induced pressure.

ESEMPIO/EXAMPLE:

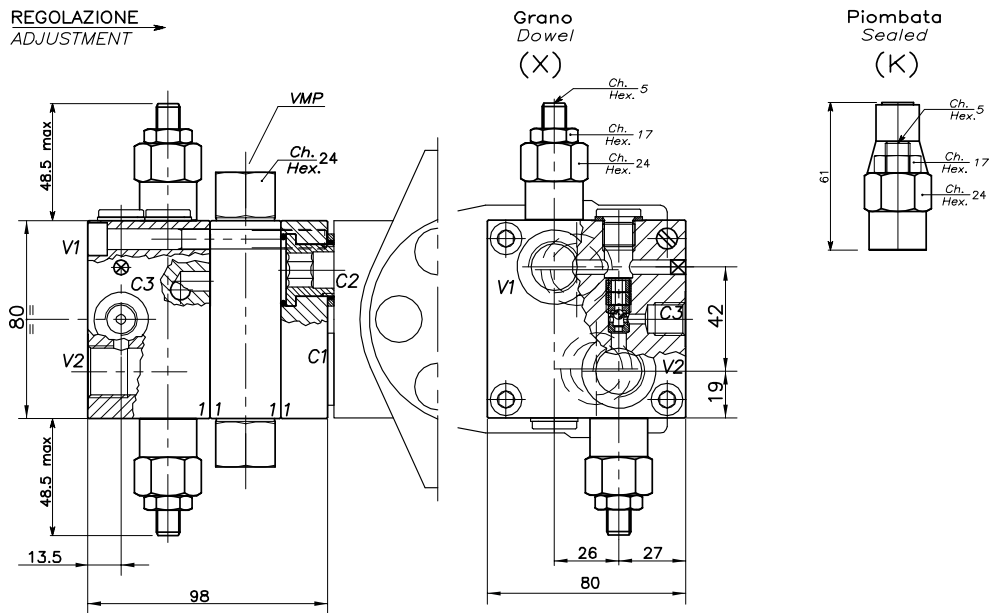
Pressione di lavoro max:

Max working pressure:

350 bar / 1.3 = 270 bar



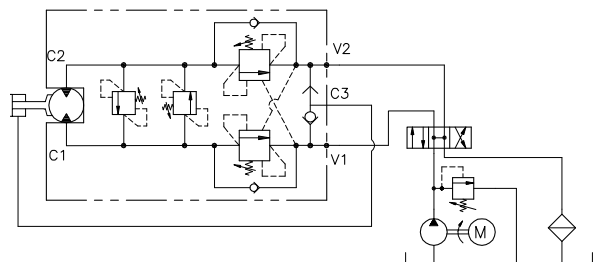
Viscosità olio 46 cSt a 50°C
Oil viscosity 46 cSt at 50°C



**DIMENSIONI
DIMENSIONS**

**ESEMPIO TIPICO DI CIRCUITO
TYPICAL CIRCUIT EXAMPLE**

Campo taratura Setting range	Attacchi Port size V2-C2 V1-C1 GAS (BSPP)	Attacchi Port size C3 GAS (BSPP)	Tipo motore Motor type	
440	1/2"	1/4"	Samhydraulik AG-BG-AR (40x8)	FSH
441	1/2"	1/4"	Olidrive (44x17)	FOLD
442	1/2"	1/4"	Samhydraulik HPR-HPRC Danfoss OMS (32x22)	FOMS
443	1/2"	1/4"	Danfoss OMR-OMP (36x36)	FOMR-OMP



**CODICE DI ORDINAZIONE
HOW TO ORDER**

N01 . 440 . 0 X 0 . A

Campo taratura / Setting range				Rapporto di pilotaggio Pilot ratios	Regolazione Adjustment	Collettore Body
WB)	440	(VMP)		O 4.25 : 1	X Grano - Dowel	A Acciaio zincato Zinc plated steel
WB)	441	(VMP)		D 8 : 1	K Piombata - Sealed	
WB)	442	(VMP)				
WB)	443	(VMP)				
Campo taratura 30÷220 bar (molla colore verde) Setting range 30÷220 bar (green spring)		Campo taratura 60÷350 bar (molla colore giallo) Setting range 60÷350 bar (yellow spring)				
Taratura standard (Q=5 l/1')	Incr. press. - bar giro/vite	Taratura standard (Q=5 l/1')	Incr. press. - bar giro/vite			
Std. bar setting (Q=5 l/1')	Pressure rise - turn of screw	Std. bar setting (Q=5 l/1')	Pressure rise - turn of screw			
180 bar	(50)	250 bar	(90)			
				442		
				443	Collettore possibile in AL togliendo "A"	
				440	Available aluminium body without "A"	
				441		