

BS5... SINGLE STATION SUBPLATE

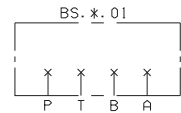


CETOP 5 SUBPLATES

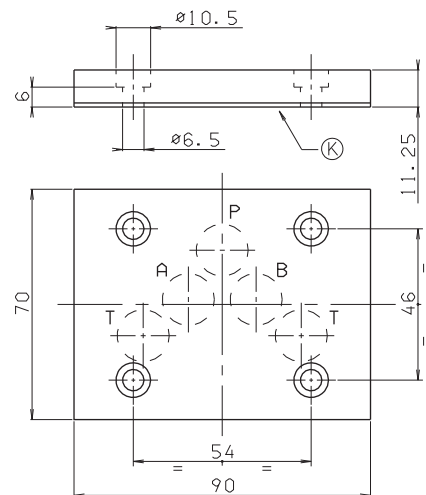
BS501 / BS50	CAP. VII • 19
BS512... / BS513...	
BS514... / BS515...	CAP. VII • 20
BS516... / BS517...	
BS53...	CAP. VII • 21
BS530/31...	CAP. VII • 22
BSVMP20... / BS529...	CAP. VII • 23
BC536/28...	CAP. VII • 24
BC541/*... / BC540...	CAP. VII • 25
BC530/32... / BC550...	
BC551...	CAP. VII • 26
BC507... / BC5107...	
BC53A... / BC1006...	CAP. VII • 27
BM5**... / BM550...	CAP. VII • 28
BM560... / BM570...	
BM580...	CAP. VII • 29
CMP20...	CARTRIDGE CATALOGUE
CMP30...	CARTRIDGE CATALOGUE

BS501...

- BS** Single subplate (blanking)
- 5** CETOP 5/NG10
- 01** P/T/A/B closed
- 00** No variant
- 1** Serial No.



• Pay attention please, use these subplate in applications at slow pressure (P max. 150 bar dynamic)



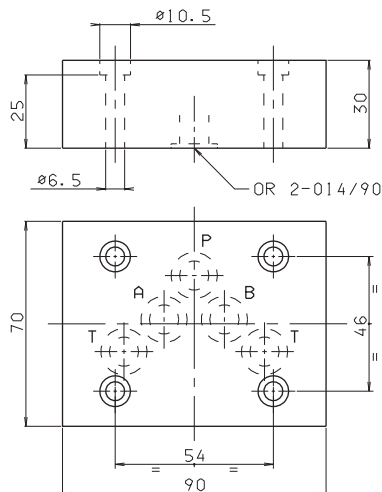
Weight: 0,5 Kg

Fixing screws
M6x15 UNI 5931
K = plate OR (Q25950002)

7

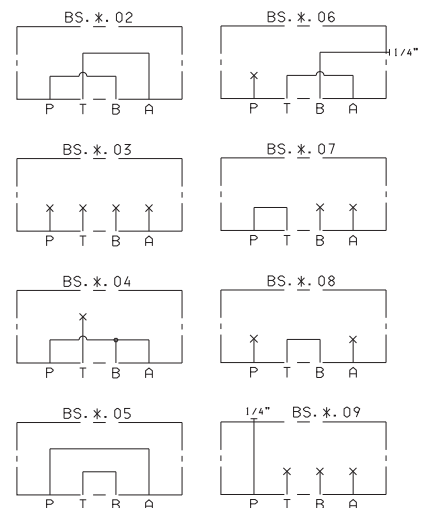
BS5...

- BS** Single subplate (blanking)
- 5** CETOP 5/NG10
- **** 02/03/04/05/06/07/08/09
- 00** No variant
- 1** Serial No.



Weight: 1,2 Kg

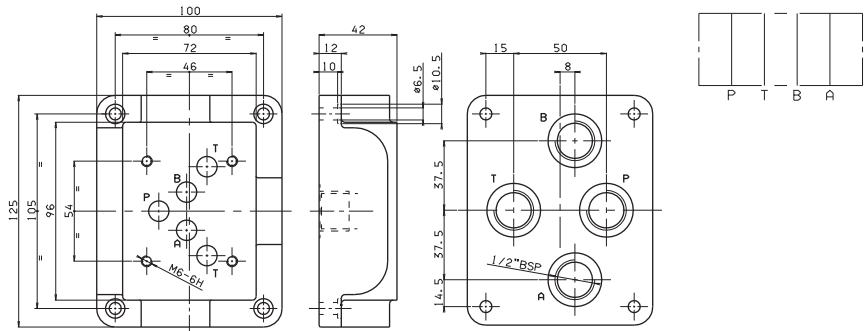
Fixing screws M6x35 UNI 5931



BS5... SINGLE STATION SUBPLATE

BS512 (REAR CONNECTORS)

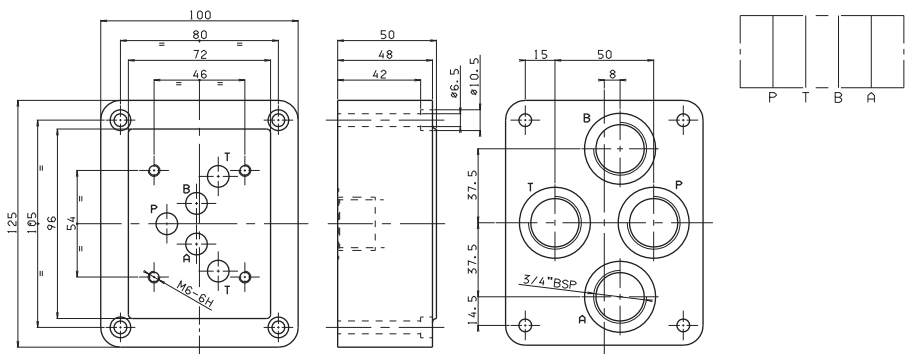
- BS** Single subplate
- 5** CETOP 5/NG10
- 12** 1/2" BSP rear connectors
- 00** No variant
- 1** Serial No.



Weight: 2,7 Kg - Fixing screws M6x25 UNI 5931

BS513 (REAR CONNECTORS)

- BS** Single subplate
- 5** CETOP 5/NG10
- 13** 3/4" BSP rear connectors
- 00** No variant
- 1** Serial No.

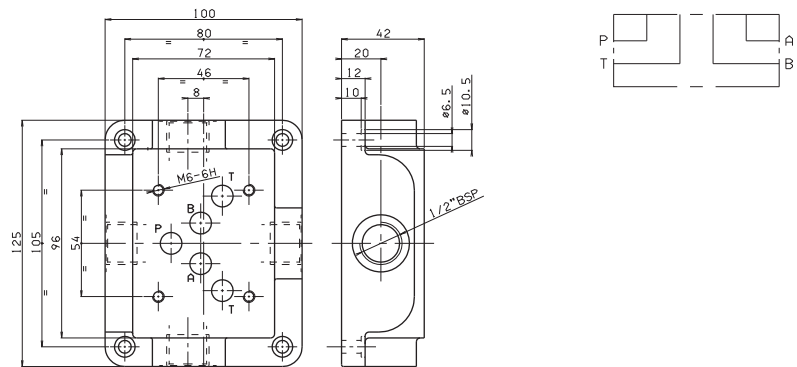


Weight: 3,8 Kg - Fixing screws M6x50 UNI 5931

7

BS514 (SIDE CONNECTORS)

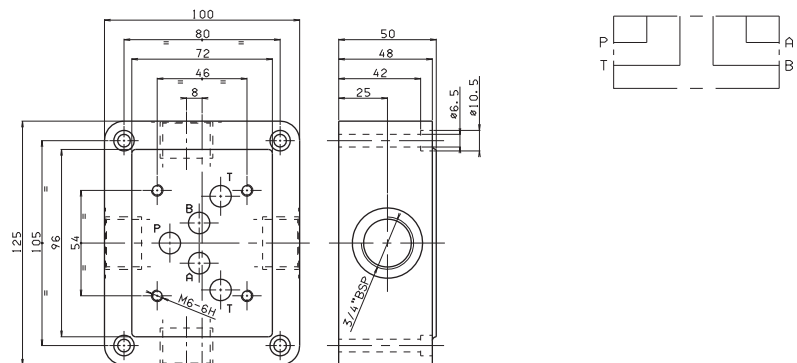
- BS** Single subplate
- 5** CETOP 5/NG10
- 14** 1/2" BSP side connectors
- 00** No variant
- 1** Serial No.



Weight: 2,6 Kg - Fixing screws M6x20 UNI 5931

BS515 (SIDE CONNECTORS)

- BS** Single subplate
- 5** CETOP 5/NG10
- 15** 3/4" BSP side connectors
- 00** No variant
- 1** Serial No.



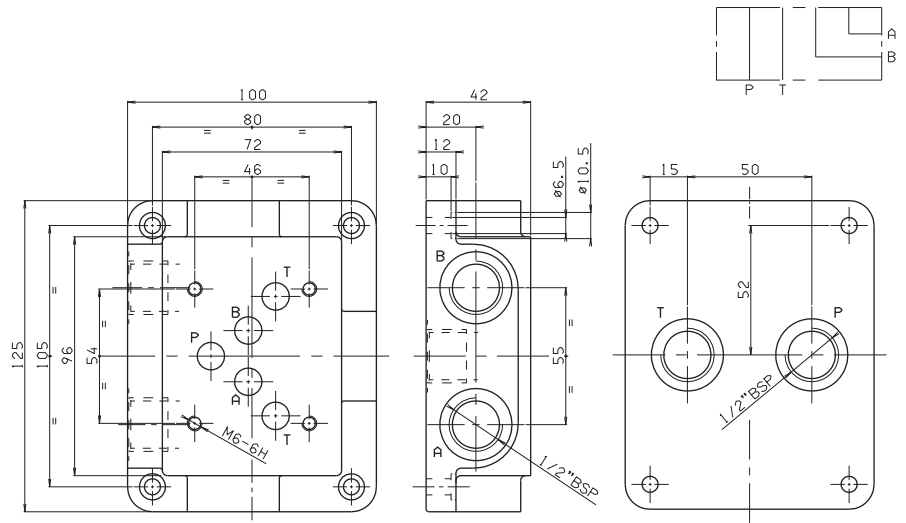
Weight: 3,8 Kg - Fixing screws M6x50 UNI 5931

BS5... SINGLE STATION SUBPLATE

BS516 (CONNECTORS SIDE A AND B, REAR P AND T)

- BS** Single subplate
- 5** CETOP 5/NG10
- 16** 1/2" BSP rear and side connectors
- 00** No variant
- 1** Serial No.

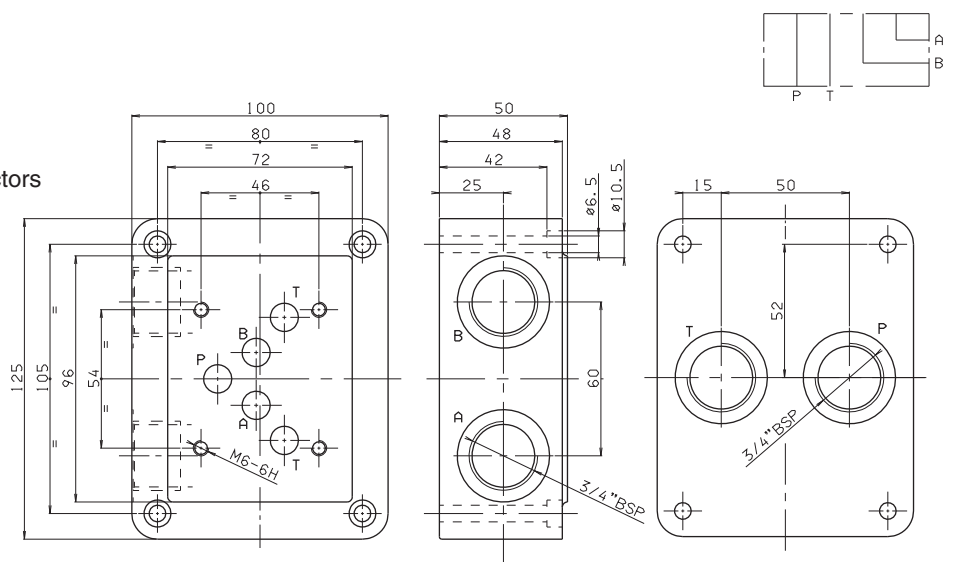
Weight: 2,6 Kg
 Fixing screws M6x20 UNI 5931



BS517 (CONNECTORS SIDE A AND B, REAR P AND T)

- BS** Single subplate
- 5** CETOP 5/NG10
- 17** 3/4" BSP rear and side connectors
- 00** No variant
- 1** Serial No.

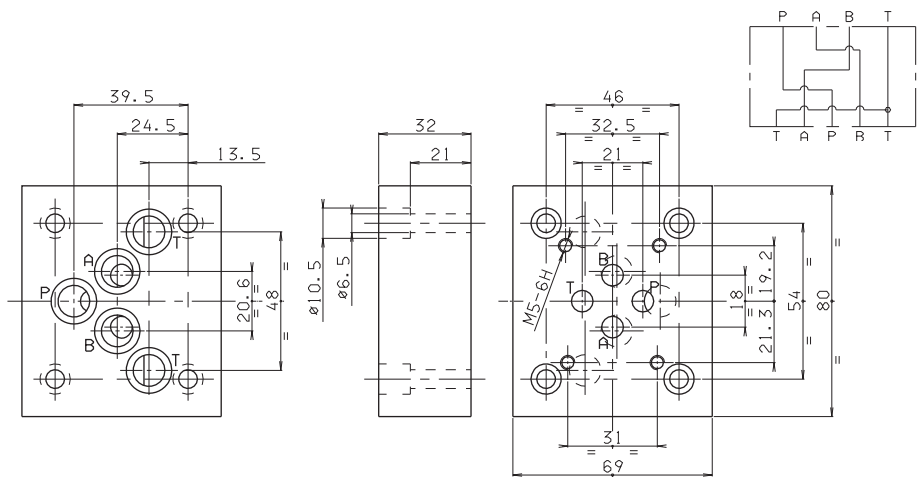
Weight: 3,9 Kg
 Fixing screws M6x50 UNI 5931



BS53 (REDUCTION PLATE FROM CETOP 5/NG10 TO CETOP 3/NG6)

- BS** Single subplate
- 5** CETOP 5/NG10
- 3** CETOP 3/NG6
- 00** No variant
- 1** Serial No.

Weight: 1,1 Kg
 Fixing screws M6x30 UNI 5931

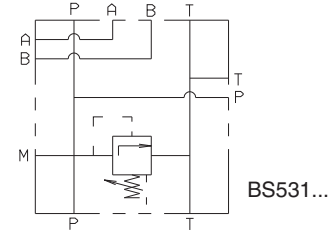
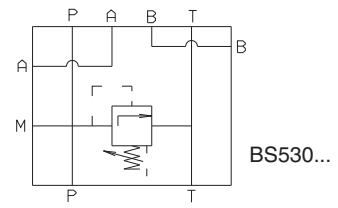


7

BS5... SINGLE STATION SUBPLATE

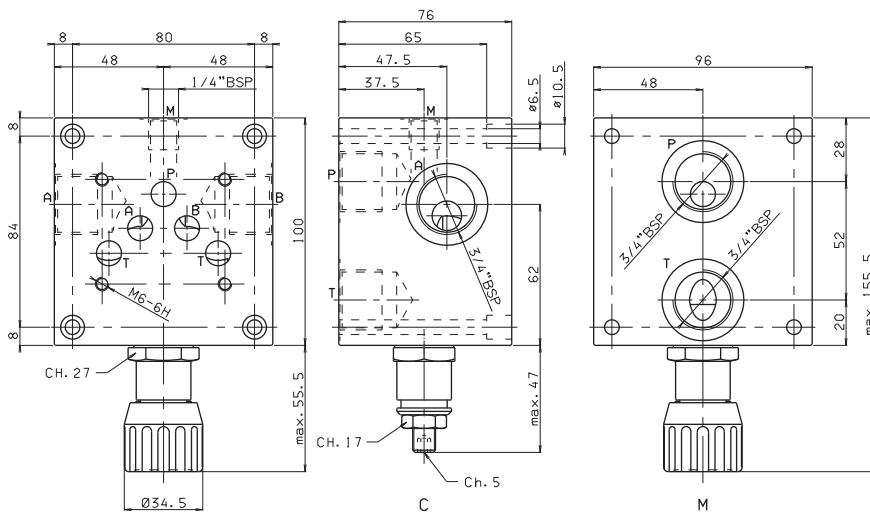
BS530/31

- BS** Single subplate
- 5** CETOP 5/NG10
- **** **30** = Connectors A and B side, P and T rear (all 3/4" BSP)
31 = Connectors A and B side, P and T rear (all 3/4" BSP)
- *** **M** = Plastic knob
C = Grub screw
- *** Setting range
1 = max. 50 bar (**white spring**)
2 = max. 140 bar (**yellow spring**)
3 = max. 350 bar (**green spring**)
- 00** No variant
- 1** Serial No.

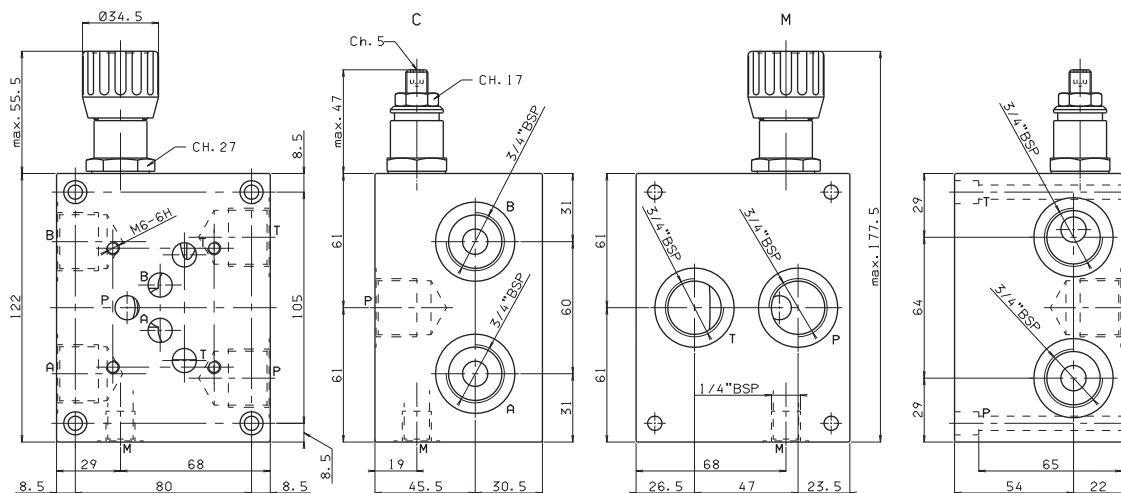


• The minimum permissible setting pressure depending on the spring:
see cartridge valve type CMP30...

BS530 (CONNECTORS A AND B SIDE, P AND T REAR)



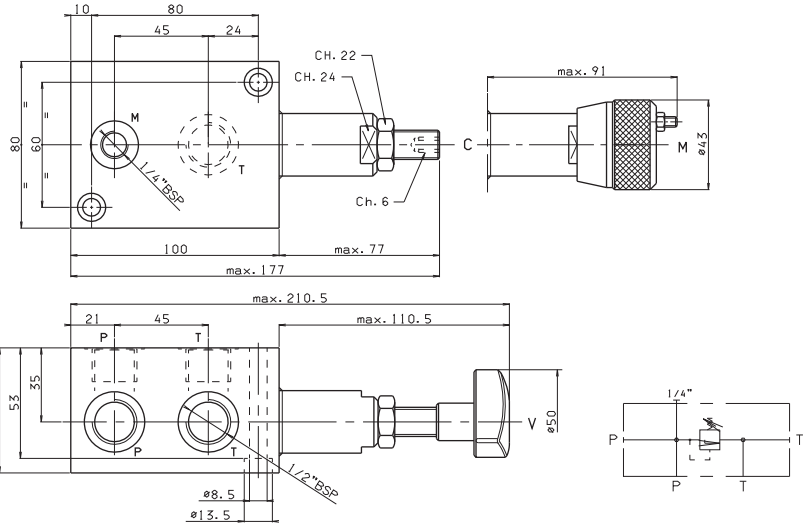
BS5.1 (CONNECTORS A AND B SIDE, P AND T SIDE AND REAR)



BS5... SINGLE STATION SUBPLATE

BSVMP20 SINGLE STATION SUBPLATE WITH MAX. PRESSURE VALVE FOR SURFACE MOUNTING (E.G. ON TANK COVER)

- BS** Single subplate
- VMP** Max. pressure valve
- 20** 1/2" BSP connectors
- *** **M** = Plastic knob
C = Grub screw
V = Handwheel
- *** Setting range
1 = max. 30 bar (**white spring**)
2 = max. 140 bar (**yellow spring**)
3 = max. 250 bar (**green spring**)
- 00** No variant
- 1** Serial No.

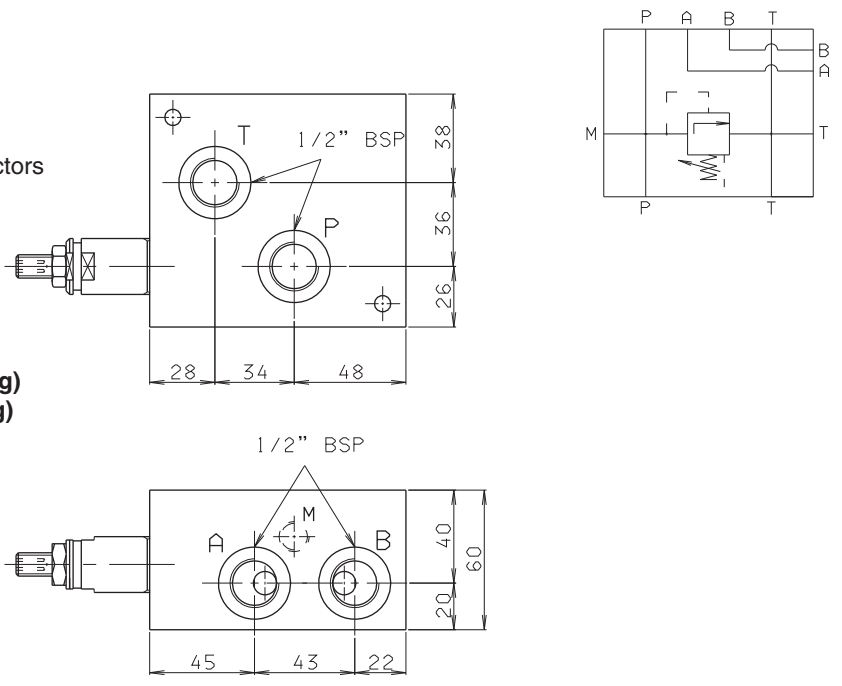


Weight: 3,1 Kg
Fixing screws M8x65 UNI 5931

• The minimum permissible setting pressure depending on the spring: see cartridge valve type CMP20...

BS529 SINGLE STATION SUBPLATE WITH MAX. PRESSURE VALVE FOR AD5I...

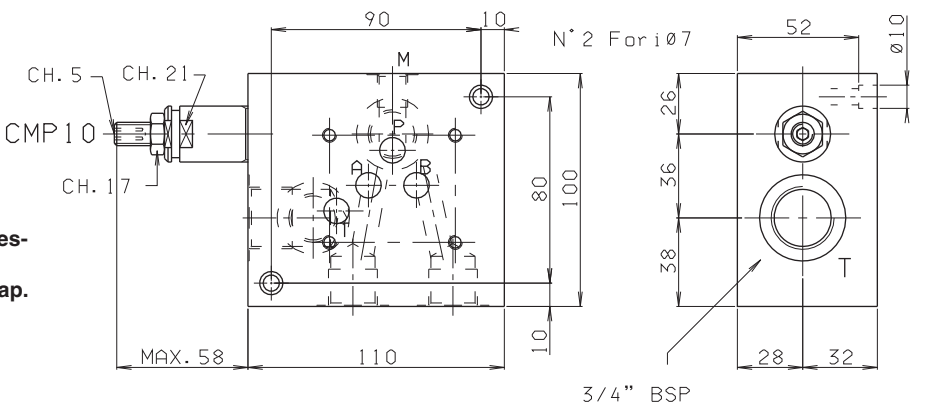
- BS** Single subplate
- 5** CETOP 5/NG10
- 29** 1/2" BSP - P rear connector
1/2" BSP - A and B side connectors
1/2" BSP - T rear connector
3/4" BSP - T side connector
- C** Type of adjustment
Grub screw
- *** Setting range
2 = max. 150 bar (**yellow spring**)
3 = max. 320 bar (**green spring**)
- 00** No variant
- 1** Serial No.



Weight: 4,5 Kg
Fixing screws M6x60 UNI 5931

Tightening torque CMP.10...
60 ÷ 70 Nm / 6 ÷ 7 Kgm

M = Manometer connector (1/4" BSP)



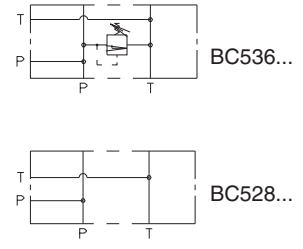
• The minimum permissible setting pressure depending on the spring: see cartridge valve type CMP10... Cap. VII • 30

7

BC5... MODULAR COMPONENTS

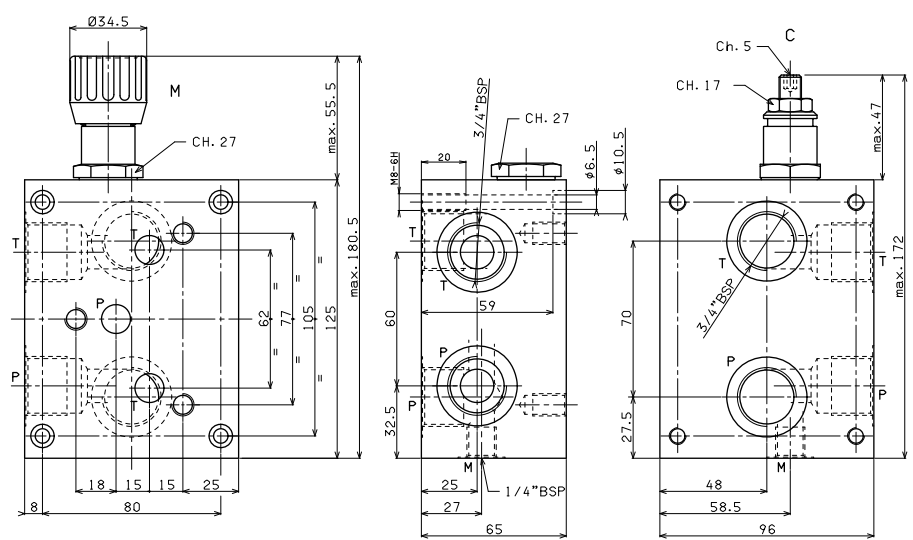
BC536/28 P AND T REAR AND SIDE CONNECTORS 3/4" BSP

- BC** Module base
- 5** CETOP 5/NG10
- **** **36** = 3/4" BSP (P and T rear and side connectors with pressure relief valve)
28 = 3/4" BSP (P and T rear and side connectors without pressure relief valve)
- *** Type adjustment (omit for 28 version)
M = Plastic knob
C = Grub screw
- *** Setting range (omit for 28 version)
1 = max. 50 bar (**white spring**)
2 = max. 140 bar (**yellow spring**)
3 = max. 350 bar (**green spring**)
- 00** No variant
- 1** Serial No.



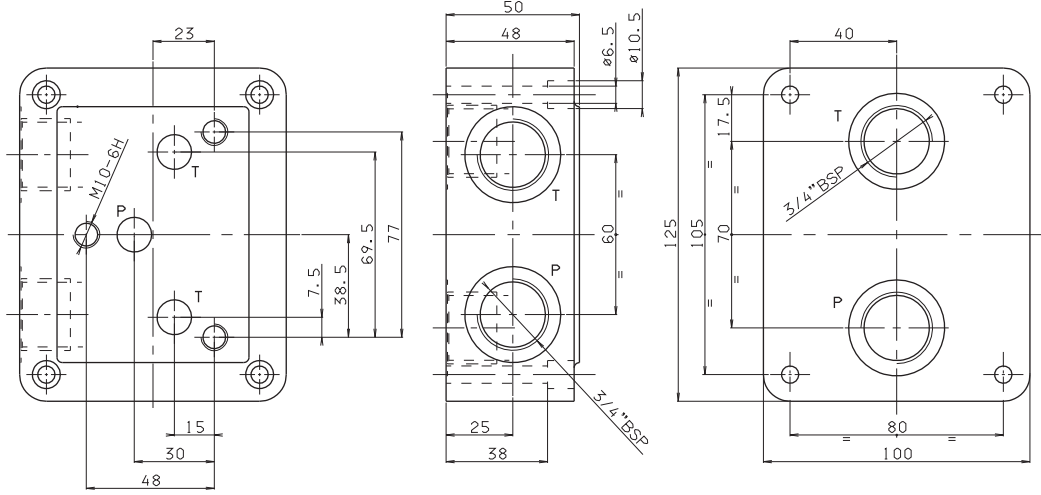
•The minimum permissible setting pressure valve is the same for all spring: see cartridge valve type CMP30...

BC536 P/T REAR AND SIDE CONNECTORS WITH PRESSURE RELIEF VALVE



Weight: 5,3 Kg
Fixing screws M6x70 UNI 5931

BC528 P/T REAR AND SIDE CONNECTORS WITHOUT PRESSURE RELIEF VALVE



Weight: 3,9 Kg
Fixing screws M6x50 UNI 5931

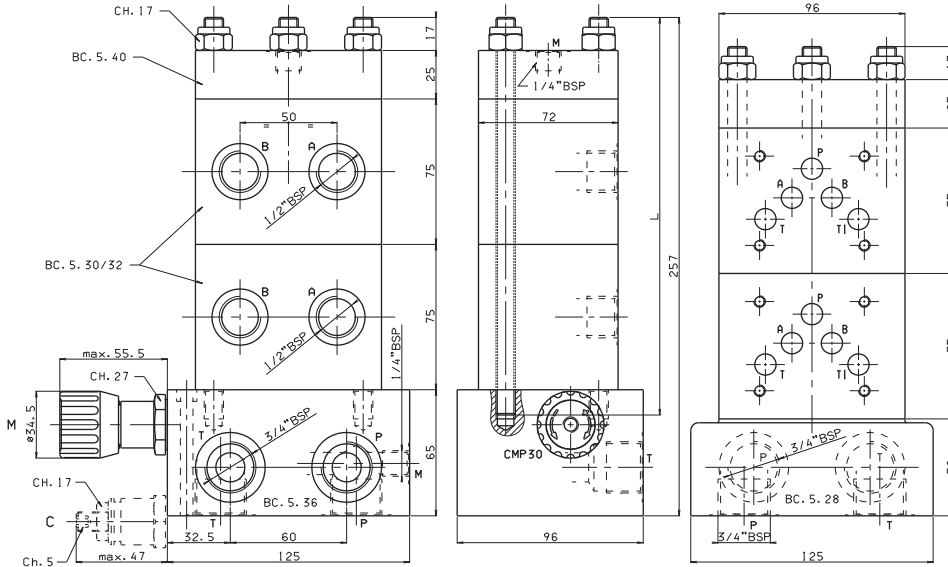
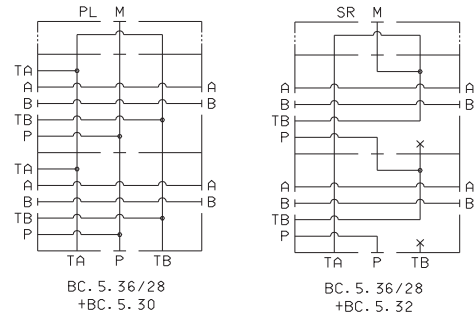
7

BC5... MODULAR COMPONENTS

ASSEMBLED BASE MODULES - 3 RODS

Rods code	L	Composition
BC541/2	M80250001	205 BC536/28+ 2 BC530/32 + BC540
BC541/3	M80250002	280 BC536/28+ 3 BC530/32 + BC540
BC541/4	M80250003	355 BC536/28+ 4 BC530/32 + BC540
BC541/5	M80250004	430 BC536/28+ 5 BC530/32 + BC540
BC541/6	M80250005	505 BC536/28+ 6 BC530/32 + BC540
BC541/7	M80250006	580 BC536/28+ 7 BC530/32 + BC540
BC541/8	M80250007	655 BC536/28+ 8 BC530/32 + BC540

Nuts code	Q26560545
Pieces	3



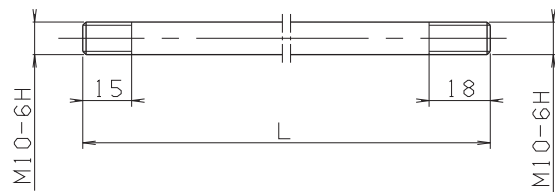
- Single components should be ordered separately
- The minimum permissible setting pressure is the same for all spring: see cartridge valve type CMP30...

7

BC541/* RODS FOR MODULAR ASSEMBLIES

Rods code	Pieces	L	Composition
BC541/2001	3	205	for 2 solenoid valve
BC541/3001	3	280	for 3 solenoid valve
BC541/4001	3	355	for 4 solenoid valve
BC541/5001	3	430	for 5 solenoid valve
BC541/6001	3	505	for 6 solenoid valve
BC541/7001	3	580	for 7 solenoid valve
BC541/8001	3	655	for 8 solenoid valve

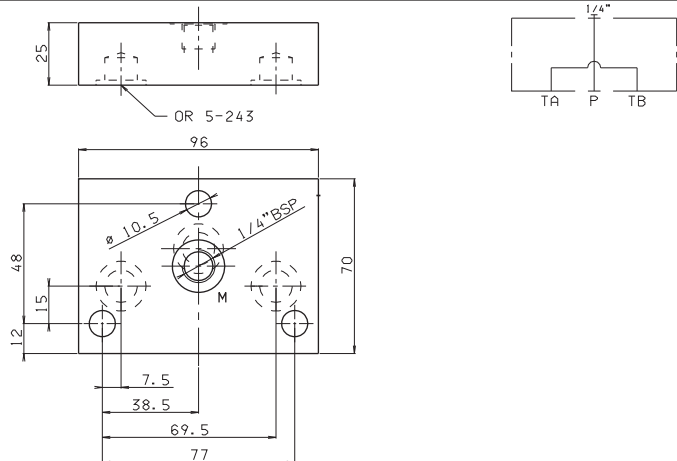
Tightening torque: 47 Nm (±2 Nm)



BC540...

- BC** Module base
- 5** CETOP 5/NG10 - 3 rods
- 40** Blanking
- 00** No variant
- 1** Serial No.

Weight: 1 Kg

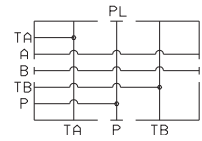
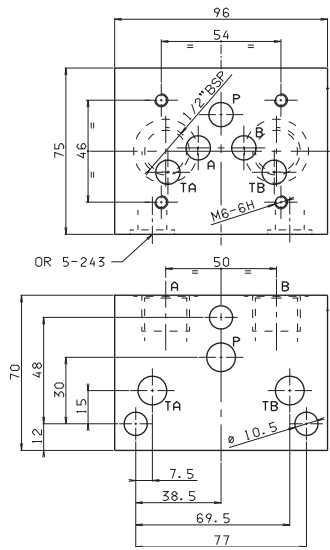


BC5... MODULAR COMPONENTS

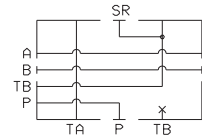
BC530/32

- BC** Module base
- 5** CETOP 5/NG10 - 3 rods
- ****
 - 30** = 1/2" BSP connectors in parallel
 - 31** = 3/4" BSP connectors in parallel
 - 32** = 1/2" BSP connectors in series
- ****
 - 00** = No variant
 - AI** = A and B rear connector
 - AS** = A and B upper connectors
- 1** Serial No.

Weight: 3 Kg



BC530...
BC531...



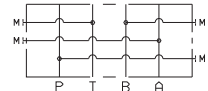
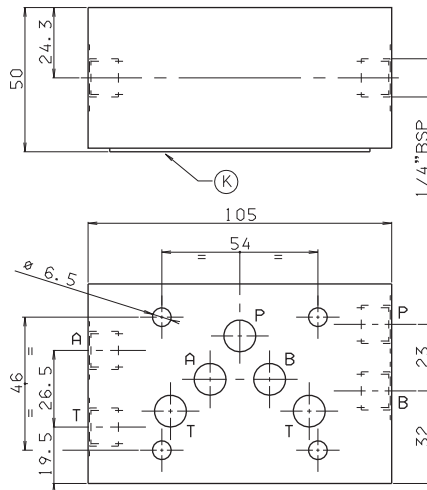
BC.5.32...

BC550 INTERMEDIATE MODULE FOR PRESSURE GAUGE

- BC** Module base
- 5** CETOP 5/NG10
- 50** Intermediate module for pressure gauge connection at ports A/B/P/T
- 00** No variant
- 1** Serial No.

Weight: 2,3 Kg

K = plate OR (Q25950002)



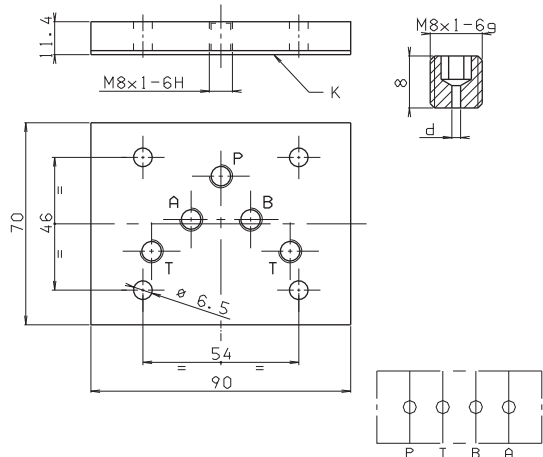
BC551 DOWEL PLATE FOR SOLENOID VALVE

- BC** Module base
- 5** CETOP 5/NG10
- 51** Subplate for solenoid valve
- 00** No variant
- 1** Serial No.

Weight: 0,5 Kg

K = plate OR (Q25950002)

CALIBRATED DIAPHRAGMS AVAILABLE	
d	M8x1x8
0.6	M89100007
0.7	M89100008
0.8	M89100009
0.9	M89100012
1	M89100010
1.2	M89100011
1.4	M89100038
1.5	M89100035
1.75	M89100042
2	M89100041
2.5	M89100036

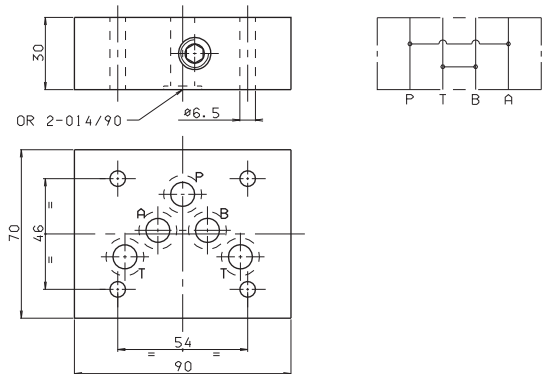


BC5... MODULAR COMPONENTS

BC507 BASE FOR DOUBLE FLOW RATE P→A E B→T

- BC** Module base
- 5** CETOP 5/NG10
- 07** Base for double flow rate
- 00** No variant
- 1** Serial No.

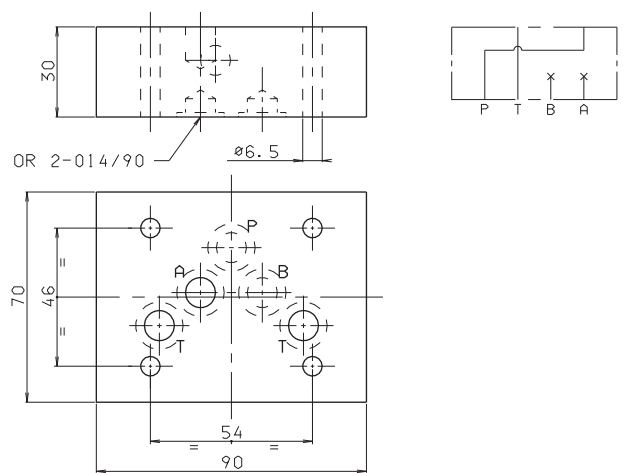
Weight: 1,2 Kg



BC5107 BASE FOR USE WITH 2 WAY VALVE

- BC** Module base
- 5** CETOP 5/NG10
- 107** Base for use with 2 way valve
- 00** No variant
- 1** Serial No.

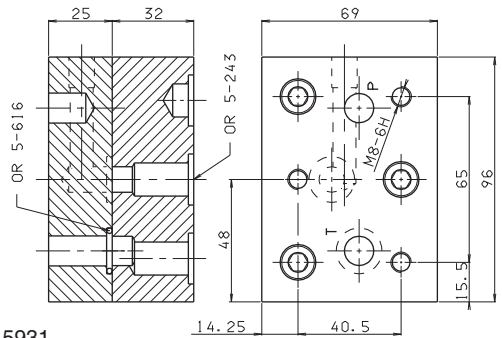
Weight: 1,2 Kg



BC53A REDUCTION BASE FROM BC5... TO BC3...

- BC** Module base
- 5** CETOP 5/NG10 - 3 rods
- 3A** CETOP 3/NG6 - 3 rods
- 00** No variant
- 1** Serial No.

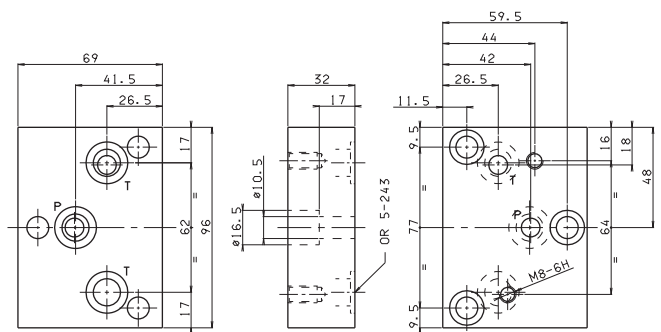
Weight: 2,4 Kg - Fixing screws M10x30 UNI 5931



BC1006 REDUCTION BASE FROM BC5... TO BC06...

- BC** Module base
- 10** CETOP 5/NG10 - 3 rods
- 06** CETOP 3/NG6 - 2 rods
- 00** No variant
- 1** Serial No.

Weight: 1,3 Kg - Fixing screws M10x30 UNI 5931



7

BM5... MULTI STATION SUBPLATES

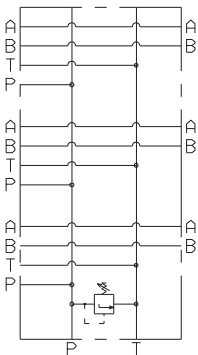
BM5...

- BM** Multi station subplate (standard versions are supplied in cast iron material)
- 5** CETOP 5/NG10
- ****
 - 50** = Connected in parallel with pressure relief valve and rear connectors
 - 60** = Connected in parallel without pressure relief valve and side connectors
 - 70** = Connected in parallel with pressure relief valve and 3/4" BSP P/T connectors and 1/2" BSP side A/B
 - 80** = Connected in parallel with pressure relief valve and 1" BSP P/T connectors and 3/4" BSP side A/B
- *** No. of valves seats (for BM580... max 6)
2 / 3 / 4 / 5 / 6 / 7 / 8
- *** Type of adjustment (omit for 60 version)
M = Plastic knob
C = Grub screw
- *** Setting range (omit for 60 version)
1 = max. 50 bar (**white spring**)
2 = max. 140 bar (**yellow spring**)
3 = max. 350 bar (**green spring**)
- **** **00** = No variant
AL = in aluminium material (only for BM560 and BM570 versions), recommended pressure max. 230 bar
- 1** Serial No.

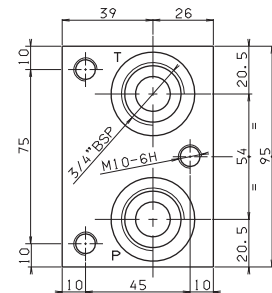
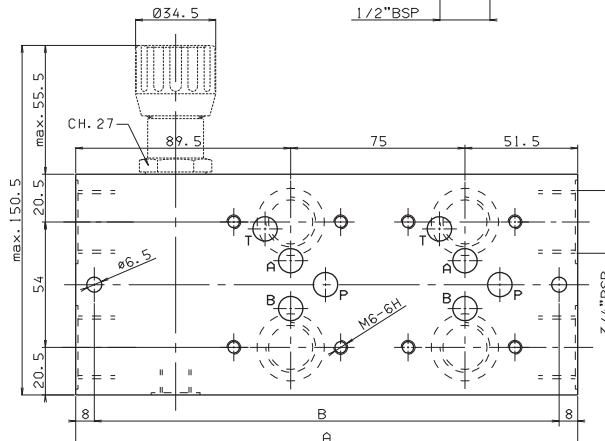
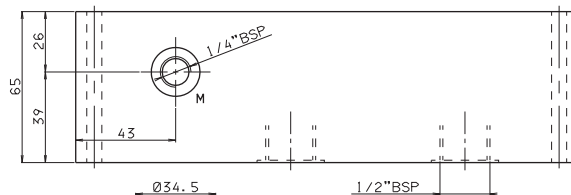
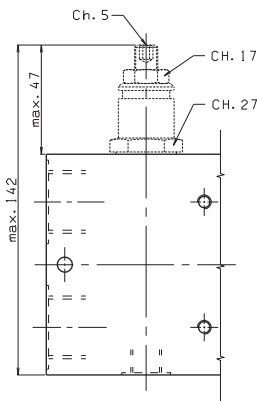
• The minimum permissible setting pressure is the same for all spring: see cartridge valve type CMP30...

BM550 CONNECTED IN PARALLEL WITH PRESSURE RELIEF VALVE

7



Type	A	B	Weight(Kg)
BM550/2	216	200	8,5
BM550/3	291	275	11,3
BM550/4	366	350	14
BM550/5	441	425	16,8
BM550/6	516	500	19,5
BM550/7	591	575	22,3
BM550/8	666	650	25

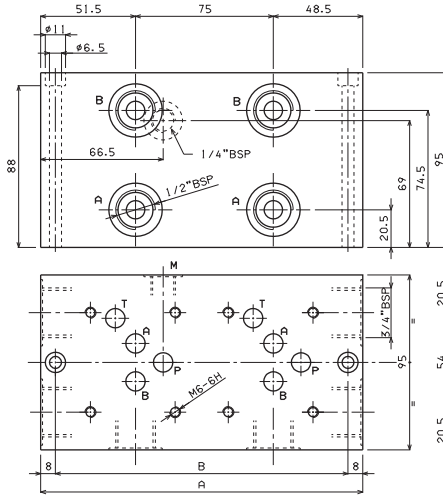
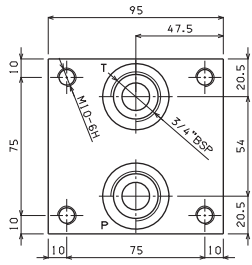


Fixing screws M6x75 UNI 5931

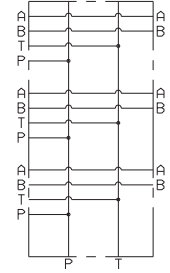
BM5... MULTI STATION SUBPLATES

BM560 CONNECTED IN PARALLEL WITHOUT PRESSURE RELIEF VALVE

Type	A	B	Weight(Kg)
BM560/2	175	159	10
BM560/3	250	234	14,2
BM560/4	325	309	18,4
BM560/5	400	384	22,6
BM560/6	475	459	26,8
BM560/7	550	534	31
BM560/8	625	609	35,2

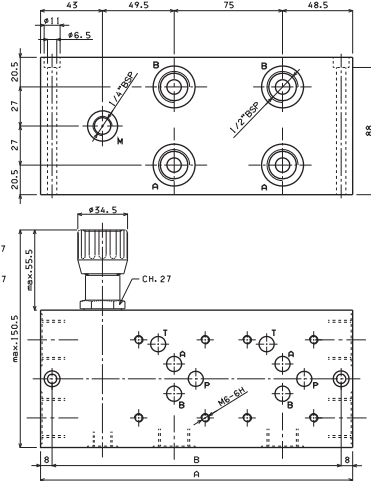
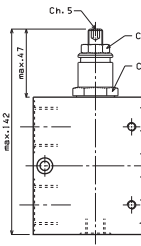
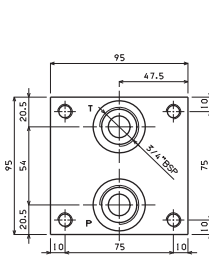


Fixing screws M6x100 UNI 5931

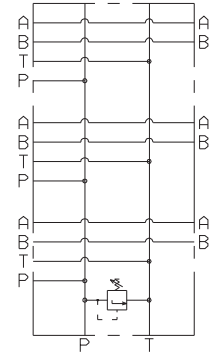


BM570 CONNECTED IN PARALLEL WITH PRESSURE RELIEF VALVE

Type	A	B	Weight(Kg)
BM570/2	216	200	12,7
BM570/3	291	275	16,8
BM570/4	366	350	21
BM570/5	441	425	25,2
BM570/6	516	500	29,5
BM570/7	591	575	33,6
BM570/8	666	650	37,8

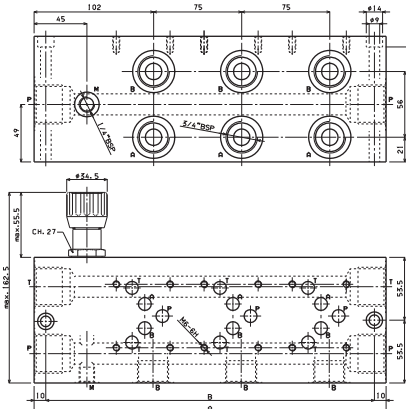
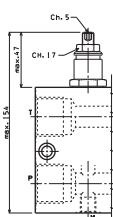
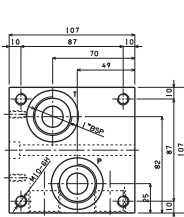


Fixing screws M6x100 UNI 5931

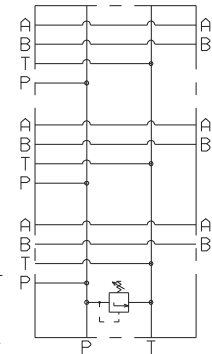


BM580 CONNECTED IN PARALLEL WITH PRESSURE RELIEF VALVE

Type	A	B	Weight(Kg)
BM.5.80/2	225	205	19,5
BM.5.80/3	300	280	26
BM.5.80/4	375	355	32,5
BM.5.80/5	450	430	39
BM.5.80/6	525	505	45,5



Fixing screws M8x110 UNI 5931



7