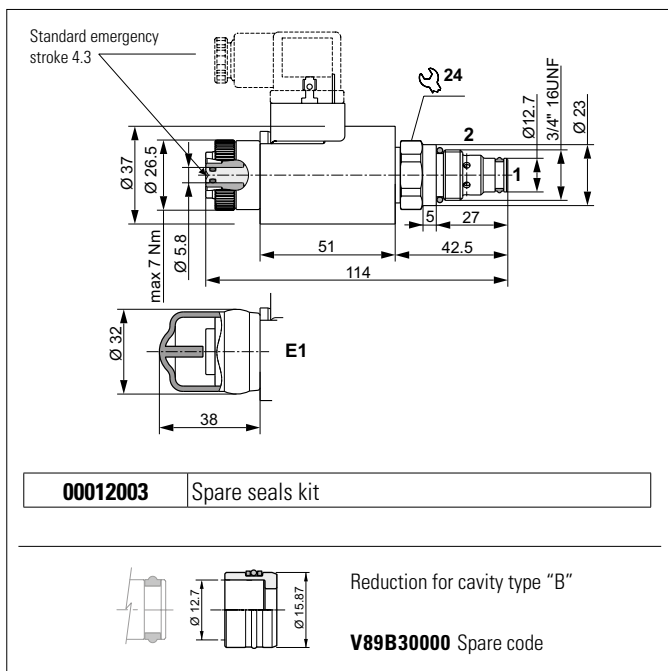


## COMPENSATED FLOW PROPORTIONAL VALVE NC POPPET TYPE

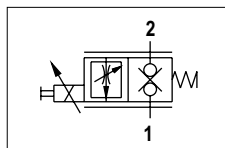


Flow control cartridge valves direct acting, are normally closed 2 ways 2 positions with double sealing in both directions 1 → 2 and 2 → 1, and movement of the load downward at constant speed in direction 2 → 1 with no regard to the pressure. The multiple function is possible with the innovative principle that permits to combine two functions in a single valve. The sealing in both directions is obtained with a tapered spool made of steel tempered and grinded, also the compensation is obtained with a spool made of steel tempered and grinded. The tubes are made of steel with zinc coating surface treatment.

### HYDRAULIC FEATURES

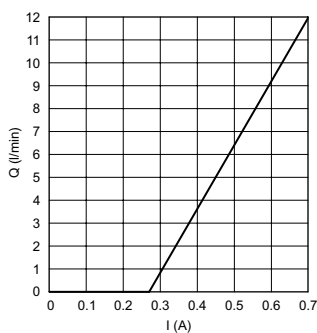
Max. working pressure	250 bar
ΔP setting	4.5 bar
Flow at 250 bar	12 l/min
Hydraulic fluid	DIN 51524 Mineral oils
Fluid viscosity	10 ÷ 500 mm <sup>2</sup> /s
Fluid temperature	-25°C ÷ 75°C
Ambient temperature	-25°C ÷ 60°C
Max. contamin. level class with filter	ISO 4406:1999 - class 19/17/14
Weight	0.47kg
Tightening torque	25 ÷ 30 Nm
Cavity standard "A" (3/4 - 16 UNF)	CD018006 (See section 17)
Cavity with reduction "B" (3/4 - 16 UNF)	CD018012 (See section 17)

### HYDRAULIC SYMBOL

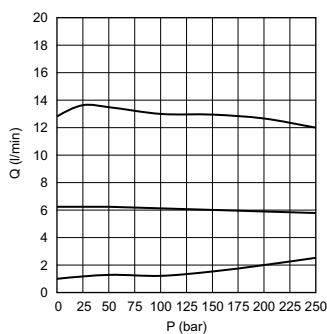


11

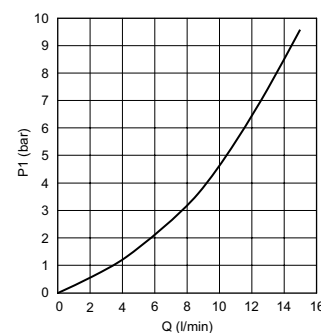
### CURRENT - FLOW (at 250 bar)



### FLOW - PRESSURE



### ΔP 1 → 2



Fluid used: mineral based oil with viscosity 32 mm<sup>2</sup>/s at 40°C.

### ORDERING CODE

