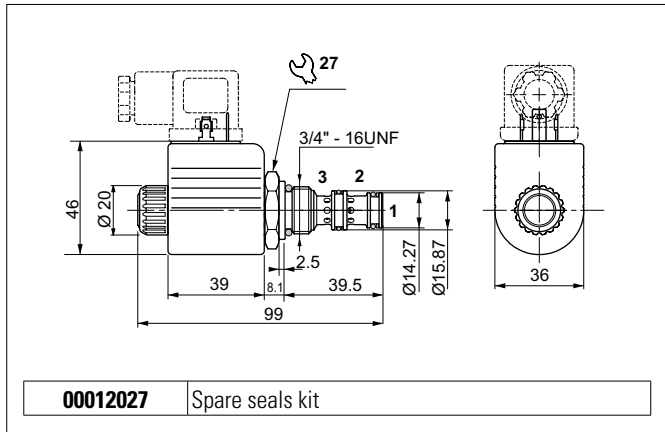
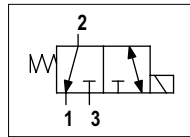


SOLENOID VALVES 3-WAY/2-POSITION

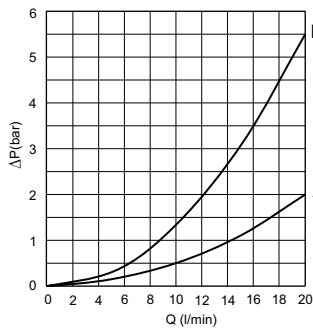


Connector to be ordered separately, see sect. 20

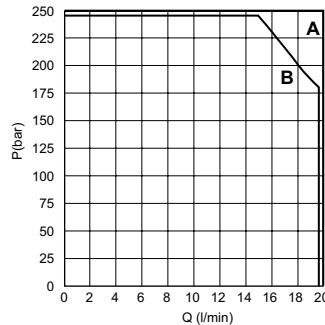
HYDRAULIC SYMBOL



PRESSURE DROPS



LIMIT OF USE



The electric valve is a 3-way 2-position directional electrically controlled valve.

Slight leakage is tolerated for this type of valve.

The valves work with DC coils whereas RAC coils with a connector with incorporated rectifier must be used for AC applications.

The sleeve is in phosphate steel. The plunger is in tempered and ground steel.

HYDRAULIC FEATURES

Max. working pressure	250 bar
Max. Flow	20 l/min
Max. excitation frequency	2 Hz
Duty cycle	100% ED
Hydraulic fluid	DIN 51524 Mineral oils
Fluid viscosity	10 ÷ 500 mm ² /s
Fluid temperature	-25°C ÷ 75°C
Ambient temperature	-25°C ÷ 50°C
Max. contamin. level class with filter	ISO 4406:1999 - class 19/17/14
Type of protection (in relation to the connector used)	IP 65
Weight	0.30 kg
Cartridge tightening torque	25 ÷ 30 Nm
Coil ring nut tightening torque	4.5 Nm
Cavity (3/4 - 16 UNF)	CD018003 (See section 17)

Flow	Pressure drops	Limit of use
2 → 1	A	A
2 → 3	B	A
3 → 2	B	B
Curve		

The tests were carried out with the 27W solenoids at operating temperature, with a supply voltage 10% below nominal value and with a 40°C fluid temperature.

The fluid used is a mineral oil with viscosity of 46 mm²/s at 40°C.

ORDERING CODE

C3V 04 27 1D D S * ** 2

- C3V** = Solenoid valve 3 way / 2 positions (Series)
- 04** = 3/4 - 16 UNF (Size)
- 27** = 27W (A09) (Coil)
- 1D** = Hydraulic schema (Schema)
- D** = Seat (Seat type)
- S** = Without emergency (Version)
- *** = Variants
- **** = Variants
- 2** = Serial No.

Variants:

- 00** = No variants
- FL** = Coil with flying leads (250 mm) (1)
- LD** = Coil with flying leads (130 mm) and integrated diode (1)
- AJ** = AMP Junior coil (1)
- CX** = Deutsch coil and integrated diode (1)

Connector to be ordered separately, see sect. 20

DC 27W (A09)

L = 12 VDC	Z = 102 VDC RAC (2)
M = 24 VDC	X = 205 VDC RAC (3)
N = 48 VDC	W = Without coil (4)
P = 110 VDC	

Coils technical data, see sect. 19

(1) Only voltages 12 VDC - 24 VDC
(2) With rectifier: 115 VAC/50Hz - 120 VAC/60Hz

(3) With rectifier: 230 VAC/50Hz - 240 VAC/60Hz
(4) Performance are guaranteed only using valves completed with BFP coil