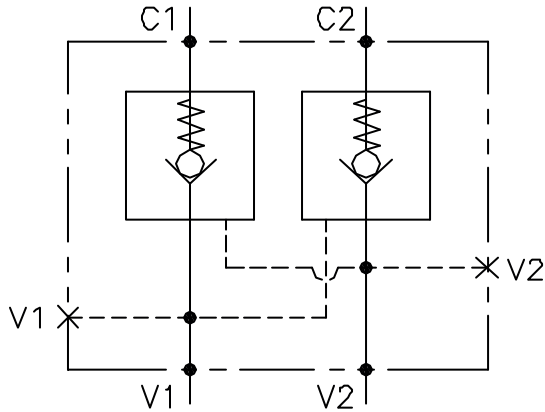


CLAPET ANTI RETOUR PILOTE,
UNIDIRECTIONNEL, SIMPLE EFFET,
A SEMPLICE EFFETTO PILOTATA,
COLLECTEUR FLASQUABLE PAR
BANJO.

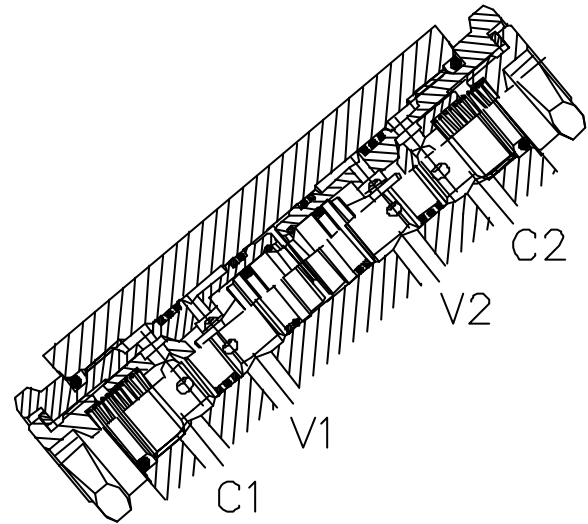


VNR-C-SO-DE-50-SP/FCB-...-...

SCHEMA DE PRINCIPE

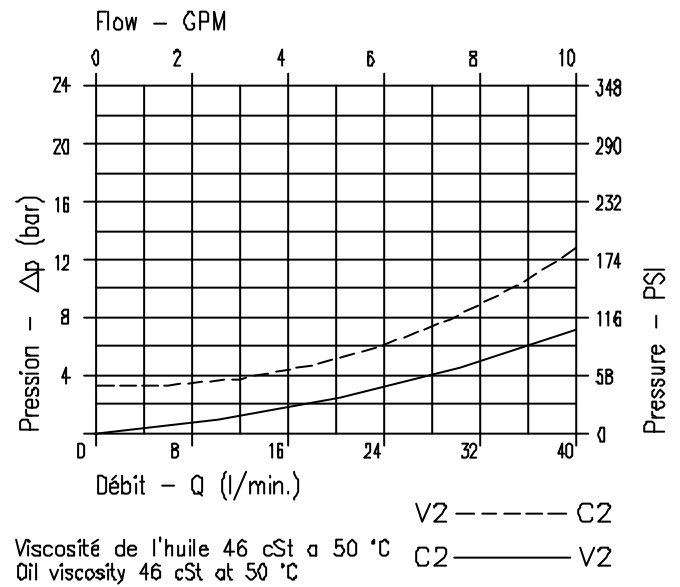


VUE EN COUPE



CARACTERISTIQUES - PERFORMANCES

Taille nominale Rated size	DN	7
Débit min/max Min/max flow-rate	l/min-GPM	1/40 - 0.26/10.6
Pression de travail max Max working pressure		400 bar 5800 PSI
Pression de service max Max setting pressure		.
Rapport de pilotage Pilot ratio		3 : 1
Température ambiante Room temperature	°C	-30 +50
Température de l'huile Oil temperature	°C	-30 +80
Filtration conseillée Filtration	micron	50
Couple de serrage Tightening torque	Nm	Vedi Pag.02
Poids Weight	Kg	.

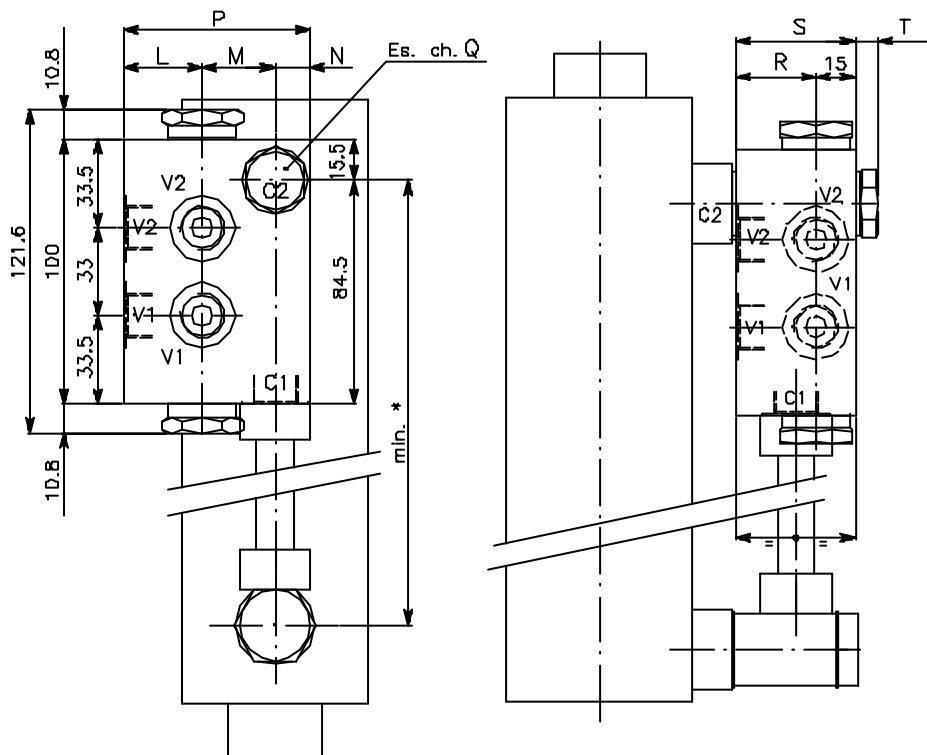


NOTE:

CODE DE COMMANDE,
ENCOMBREMENTS,
EXEMPLE DE CIRCUIT

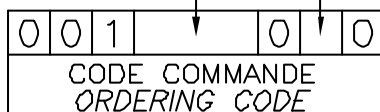


VNR-C-SO-DE-50-SP-FCB-...-...



Pression ouverture* Cracking pressure	
1 bar Resort (Couleur noire) Spring (Colour black)	J
6 ÷ 8 bar Resort (Couleur jaune) Spring (Colour yellow)	W

CODE VALVE VALVE CODE	Numéro Valve Valve Number	L	M	N	P	Q	R	S	T	Orifice Port size V2-C2 V1-C1 GAS (ESPP)	Couple de serrage Tightening torque Nm
VNR-C-SO-DE-50-SP-FCB-38-*	232	29.5	27.5	13	70	22	30	45	9	3/8"	63 ÷ 71
VNR-C-SO-DE-50-SP-FCB-12-*	250	34	30	16	80	27	35	50	10	1/2"	75 ÷ 85



EXEMPLE DE CIRCUIT TYPE
TYPICAL CIRCUIT EXAMPLE

