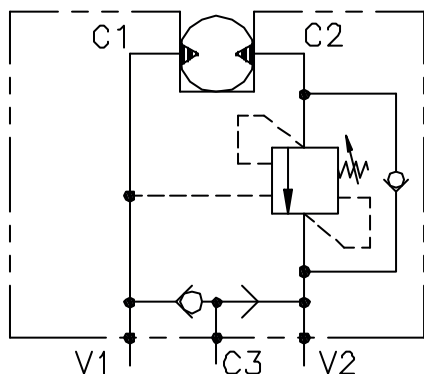


VALVE D'EQUILIBRAGE  
SUR MOTEUR  
SERIE "WB"

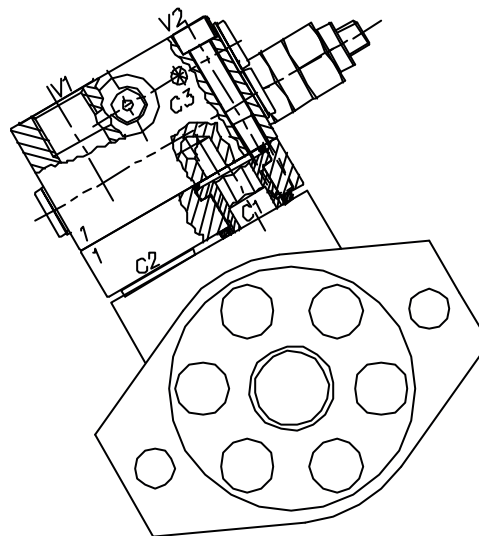


WB-M-SE-VFF-...-12-14

SCHEMA DE PRINCIPE



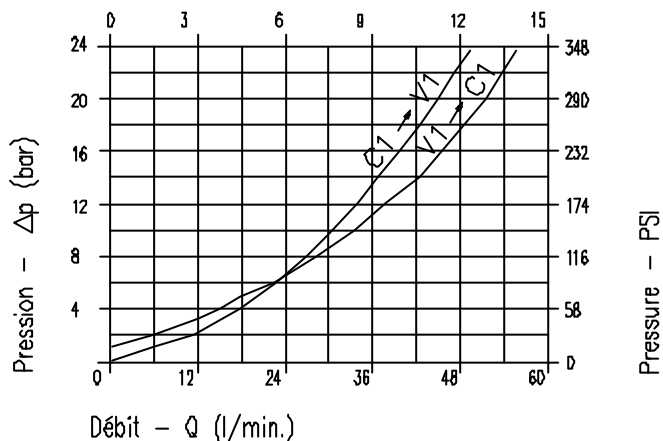
VUE EN COUPE



CARACTERISTIQUES - PERFORMANCES

Taille nominale min/max Min/max Rated size	DN	8 / 10
Débit min/max Min/max flow-rate	l/min-GPM	1/60 - 0.26/15.9
Pression de travail max Max working pressure		350 bar 5075 PSI
Pression de service max Max setting pressure		350 bar 5075 PSI
Rapport de pilotage Pilot ratio		4.25 : 1
Température ambiante Room temperature	°C	-30 +50
Température de l'huile Oil temperature	°C	-30 +80
Filtration conseillée Filtration	micron	30
Couple de serrage Tightening torque	Nm	110÷115
Poids Weight	Kg	.

Flow - GPM



NOTE:

L'étalonnage doit être 1.3 supérieur à la pression induite par la charge

Valve should be set at 1.3 times load induced pressure.

EXEMPLE:

$$\text{Pression de travail max} : \frac{350 \text{ bar}}{1.3} = 270 \text{ bar}$$

$$\text{Max working pressure} :$$

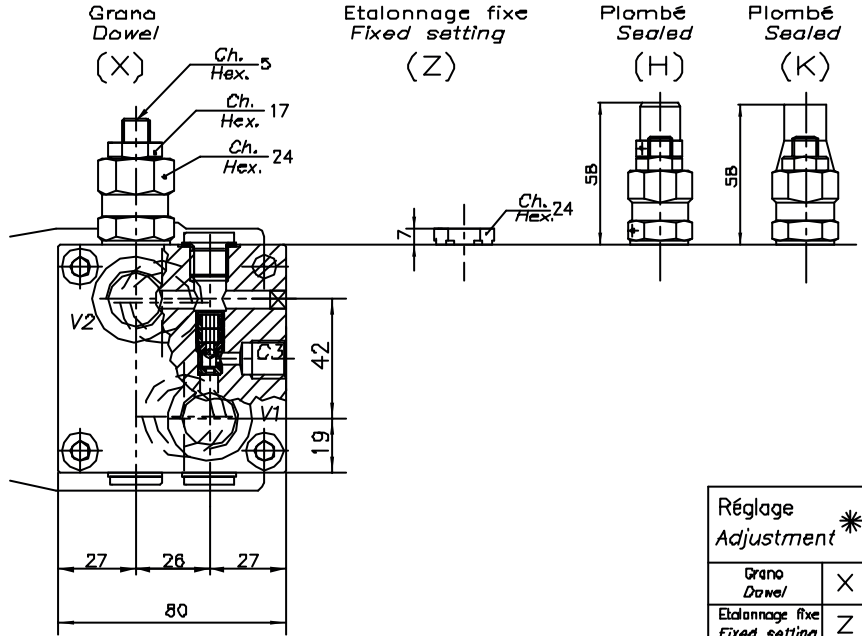
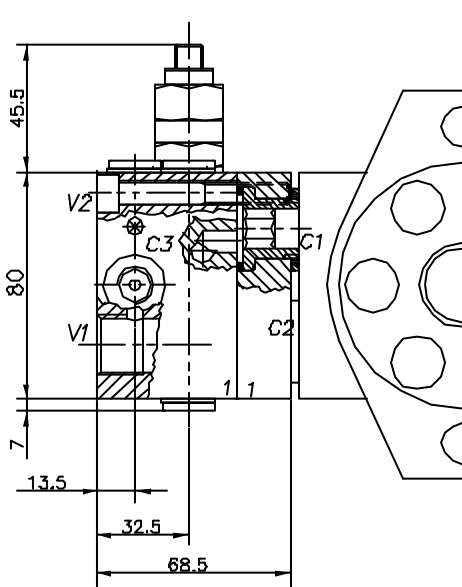
En standard, les corps des valves sont en acier mais, sur demande, ils peuvent être en aluminium  
Aluminium body valves as standard, steel body on request.

CODE DE COMMANDE,  
ENCOMBREMENTS,  
EXEMPLE DE CIRCUIT



WB-M-SE-VFF-F..-12-14

REGLAGE  
ADJUSTMENT



Réglage Adjustment *	
Grano Dowel	X
Etalonnage fixe Fixed setting	Z
Plombé Sealed	H
Plombé Sealed	K

ORDERING CODE  
CODE COMMANDE

0 0 1      0      0

CODE VALVE VALVE CODE	Réglage standard (0-5 1/1') Std. bar setting (made at 5 1/1') 220 bar	Incr. press. bar / tour Press. increase bar/turn (56)	Réglage standard (0-5 1/1') Std. bar setting (made at 5 1/1') 350 bar	Incr. press. bar / tour Press. increase bar/turn (138)	Drifée Port size V2-C2 V1-C1 GAS (BSPP)	Orifice Port size C3 GAS (BSPP)	Type du moteur Motor type
WB-M-SE-VFF-FOMS-HPR-12-14-*	533		...		1/2"	1/4"	Samhydraulik HPR-HPRC
WB-M-SE-VFF-FOLD-12-14-*	534		...	Oildrive (44x17)			
WB-M-SE-VFF-FOMR-OMP-12-14-*	535		...	Danfoss OMR-OMP (36x36)			
WB-M-SE-VFF-FSH-12-14-*	618		...	Samhydraulik (40x8)			
	Plage d'étalonnage 30 ± 220 bar (Couleur verte) Setting range 30 ± 220 bar (Colour green)		Plage d'étalonnage 80 ± 350 bar (Couleur jaune) Setting range 80 ± 350 bar (Colour yellow)				

EXEMPLE DE CIRCUIT TYPE  
TYPICAL CIRCUIT EXAMPLE

